



Old Road, £250,000

- No On-going Chain
- 0.43 Acres of Land!
- Detached Bungalow
- Great access to Amenities
- EPC Rating: D



 2  1  2



About the property

For sale on the ever-popular Old Road in the Melin, this detached two-bedroom bungalow presents a rare and exciting opportunity for buyers looking to create their ideal home. Set with approx 0.43 acres of land, the property offers exceptional outdoor space rarely found with bungalows in this area. With excellent links to local amenities including frequently running buses, well renowned schools, such as Ysgol Tyle'r Ynn and Ysgol Carreg Hir, and Neath Town Centre with high street stores, main line train station, bars and restaurants. Also well situated for commuters with great access to the M4 corridor and A465!

The home is approached with steps leading to the entrance with lawned gardens and a paved path that surrounds the property. Internally the property comprises an entrance hallway, with doors through to a spacious lounge space and master bedroom with views from the bay windows overlooking Melin park. Additionally, through the entrance hall, the property leads to a second double bedroom, family bathroom and a dining room which further leads to the kitchen with ample space and storage.

Externally, the expansive plot is a standout feature, offering a generous garden area with endless opportunity for development, gardening enthusiasts, or those seeking a peaceful setting with ample outdoor space.

For sale with no-ongoing chain, internal viewings are highly recommended to truly appreciate this home!





Accommodation

Entrance Hallway

Lounge

11' 7" max x 10' 1" max (3.53m max x 3.07m max)

Dining Room

11' 7" max x 11' 1" max (3.53m max x 3.38m max)

Kitchen

12' 2" max x 10' 9" max (3.71m max x 3.28m max)

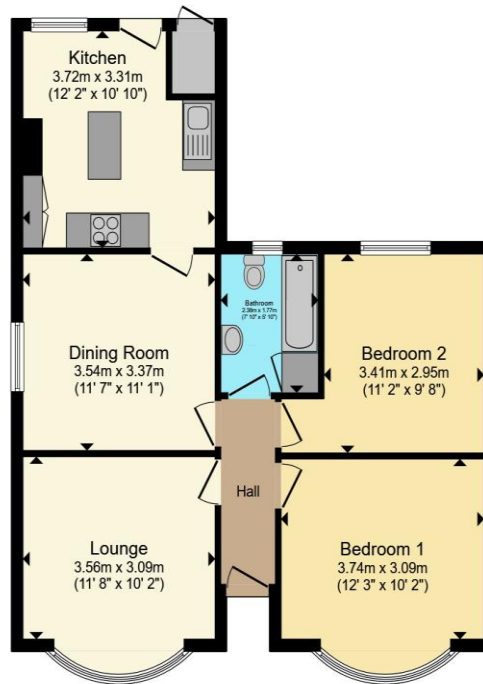
Bedroom 1

12' 3" max x 10' 1" min (3.73m max x 3.07m min)

Bedroom 2

11' 2" max x 9' 7" min (3.40m max x 2.92m min)

Floorplan



Total floor area 70.6 m² (760 sq.ft.) approx

This floor plan is for illustrative purposes only. It is not drawn to scale. Any measurements, floor areas (including any total floor area), openings and orientation are approximate. No details are guaranteed, they cannot be relied upon for any purpose and they do not form part of any agreement. No liability is taken for any error, omission or misstatement. A party must rely upon its own inspection(s). Powered by www.propertybox.io



Important Information

Note while we endeavour to make our sales details accurate and reliable, if there is any point which is of particular interest to you, please contact the office and we will be pleased to confirm the position for you. We have not personally tested any apparatus, equipment, fixtures, fittings or services and cannot verify they are in working order or fit for their purposes. Nothing in these particulars is intended to indicate that carpets or curtains, furnishings or fittings, electrical goods (whether wired or not). Gas fires or light fittings or any other fixtures not expressly included form part of the property offered for sale. This computer generated Floorplan, if applicable, is intended as a general guide to the layout and design of the property. It is not to scale and should not be relied upon for dimensions. Tenure: We cannot confirm the tenure of the property as we have not had access to the legal documents. The buyer is advised to obtain verification from their solicitor or surveyor.

Peter Alan Limited is registered in England and Wales under company number 2073153, Registered Office is Cumbria House, 16-20 Hockliffe Street, Leighton Buzzard, Bedfordshire, LU7 1GN. VAT Registration Number is 500 2481 05. For activities relating to regulated mortgages and non-investment insurance contracts, Peter Alan Limited is an appointed representative of Connells Limited which is authorised and regulated by the Financial Conduct Authority. Connells Limited's Financial Services Register number is 302221. Most buy-to-let

