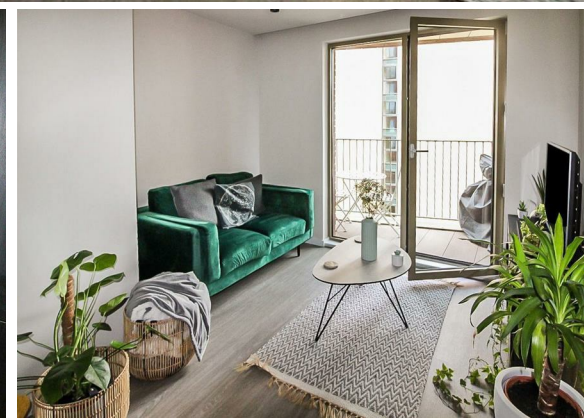
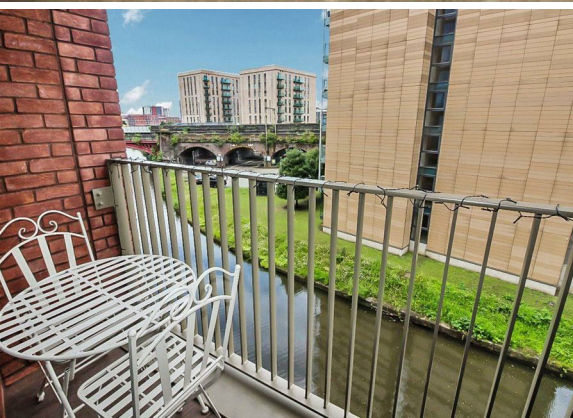


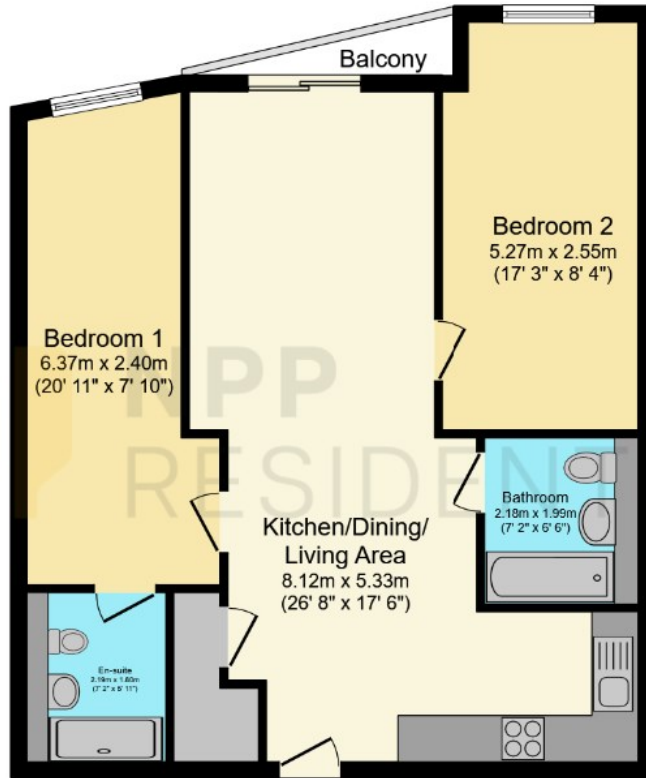


2 Bed
Apartment
located in 2 Hulme
Hall Road

Price £220,000



 **NPP**
RESIDENTIAL



Floor Plan
 Floor area 70.3 m² (756 sq.ft.)

TOTAL: 70.3 m² (756 sq.ft.)

This floor plan is for illustrative purposes only. It is not drawn to scale. Any measurements, floor areas (including any total floor area), openings and orientations are approximate. No details are guaranteed, they cannot be relied upon for any purpose and do not form any part of any agreement. No liability is taken for any error, omission or misstatement. A party must rely upon its own inspection(s). Powered by www.Propertybox.io

EPC Rating:
Council Tax Band: E

Energy Efficiency Rating		
	Current	Potential
Very energy efficient - lower running costs		
(92 plus) A		
(81-91) B		
(69-80) C		
(55-68) D		
(39-54) E		
(21-38) F		
(1-20) G		
Not energy efficient - higher running costs		
EU Directive 2002/91/EC		
England & Wales		

DIRECTIONS

CONTACT

22 Lloyd Street
 Manchester
 M2 5WA

E: info@nppresidential.co.uk
 T: 0161 639 0059
<https://nppresidential.co.uk/>

