



## 38 Albert Road

Ashford, TN24 8NX

£2,600 Per Month

A fabulous semi-detached Victorian home arranged over three floors in the ever popular, tree-lined Albert Road. This charming location is just a short walk from Ashford town centre, mainline station and Highworth Grammar school. This spacious property spans over 2,700sqft and is complemented by many features of the period such as: notably high ceilings, attractive corning and picture rails along with stained glass windows. The flexibly arranged ground floor accommodation includes a kitchen/dining room, sitting room, garden room, laundry, bathroom and cellar. To the upper floors you will be impressed by the six double bedrooms, three bathrooms whilst the rear garden enjoys a pleasant southerly aspect leading on to a detached double garage.

Call us now to register your interest and to arrange a viewing.

Council Tax Band E - Ashford Borough Council

EPC Rating - D

Security Deposit - £3000.00

### Viewing

Please contact our Ashford Office on 01233 646411 if you wish to arrange a viewing appointment for this property or require further information.

- FABULOUS SEMI DETACHED HOME
- ARRANGED OVER THREE FLOORS
- SIX DOUBLE BEDROOMS
- OFFICE & GARDEN ROOM
- DETACHED DOUBLE GARAGE
- CENTRAL LOCATION SHORT WALK FROM TOWN CENTRE & MAINLINE STATION
- THREE BATHROOMS & UTILITY
- OVER 2,700 SQFT
- SUITABLE FOR ANNEXE STYLE MULTI GENERATIONAL LIVING
- CALL US NOW TO ARRANGE A VIEWING



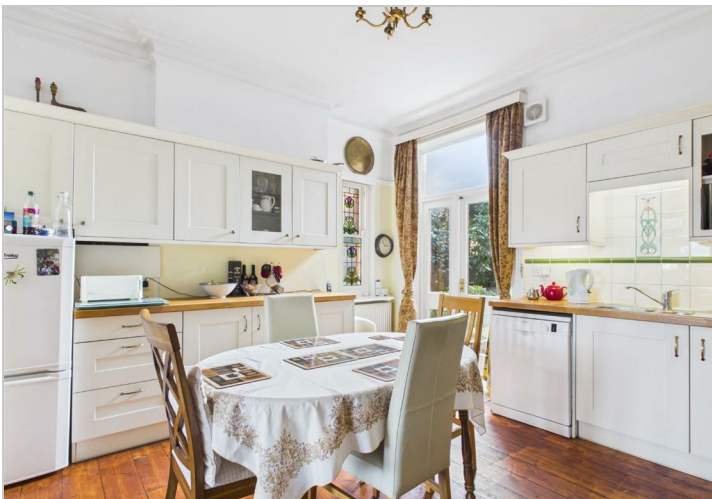
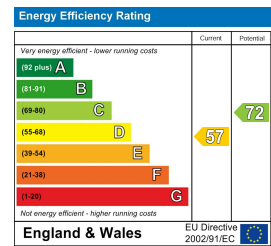
# Floor Plan



# Area Map



# Energy Efficiency Graph



These particulars, whilst believed to be accurate are set out as a general outline only for guidance and do not constitute any part of an offer or contract. Intending purchasers should not rely on them as statements of representation of fact, but must satisfy themselves by inspection or otherwise as to their accuracy. No person in this firm's employment has the authority to make or give any representation or warranty in respect of the property.