



Newbridge Farm Park, Stopgate Lane, Simonswood, Merseyside, L33 4YB

£190,000

🛏️ 2 🚿 2 🛋️ 1



- Detached Park Home Bungalow
- Two Double Bedrooms
- Spacious Accommodation
- Generous Plot and Rear Garden
- No Stamp Duty To Pay
- OMAR 42'x20' Design
- Ensuite and Guest Bathroom
- Superbly Presented
- Driveway To The Side
- Sought After Residential Park

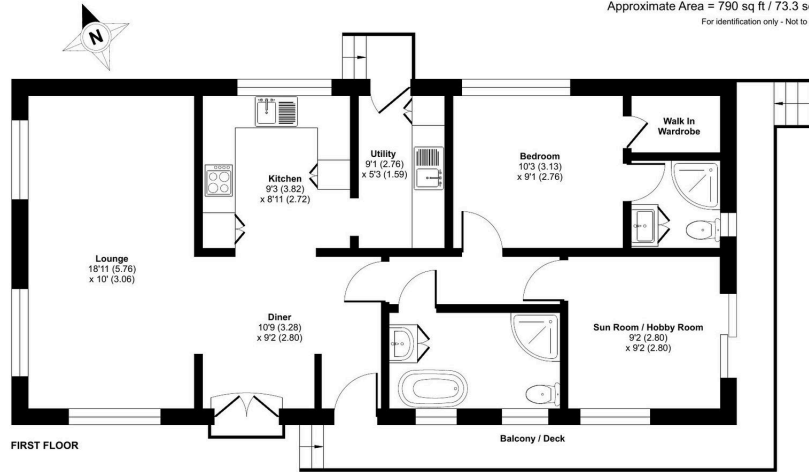


An exceptionally well-presented two-bedroom OMAR park home which has been tastefully updated by the current seller, offering stylish and spacious accommodation. Featuring a bright lounge, separate dining area, modern fitted kitchen with integrated appliances, a further utility room, sun room/hobby room which overlooks the garden, a walk-in wardrobe and ensuite shower room to the principal bedroom, a second double bedroom, luxury re-fitted guest bathroom with free standing bath and a further enclosed shower. There is a well-maintained, generously sized, enclosed rear garden and a driveway to the side of the home. Early viewing highly recommended.



Newbridge Farm Mobile Home Park, Stopgate Lane, Simonswood, Liverpool, L33

Approximate Area = 790 sq ft / 73.3 sq m
For identification only - Not to scale



Floor plan produced in accordance with RICS Property Measurement 2nd Edition, incorporating International Property Measurement Standards (IPMS2 Residential). © richrecom 2025. Produced for The Park Home Agency Ltd. REF: 1401729



01793 230185
sales@theparkhomeagency.co.uk

Agents Notes: All measurements are approximate and quoted in metric with imperial equivalents and for general guidance only and whilst every attempt has been made to ensure accuracy, they must not be relied on. The fixtures, fittings and appliances referred to have not been tested and therefore no guarantee can be given that they are in working order. Internal photographs are reproduced for general information and it must not be inferred that any item shown is included with the property. For a free valuation, contact the numbers listed on the brochure