

FLETCHERS

ESTATE AGENTS



Chiswick High Road, W4

£650,000

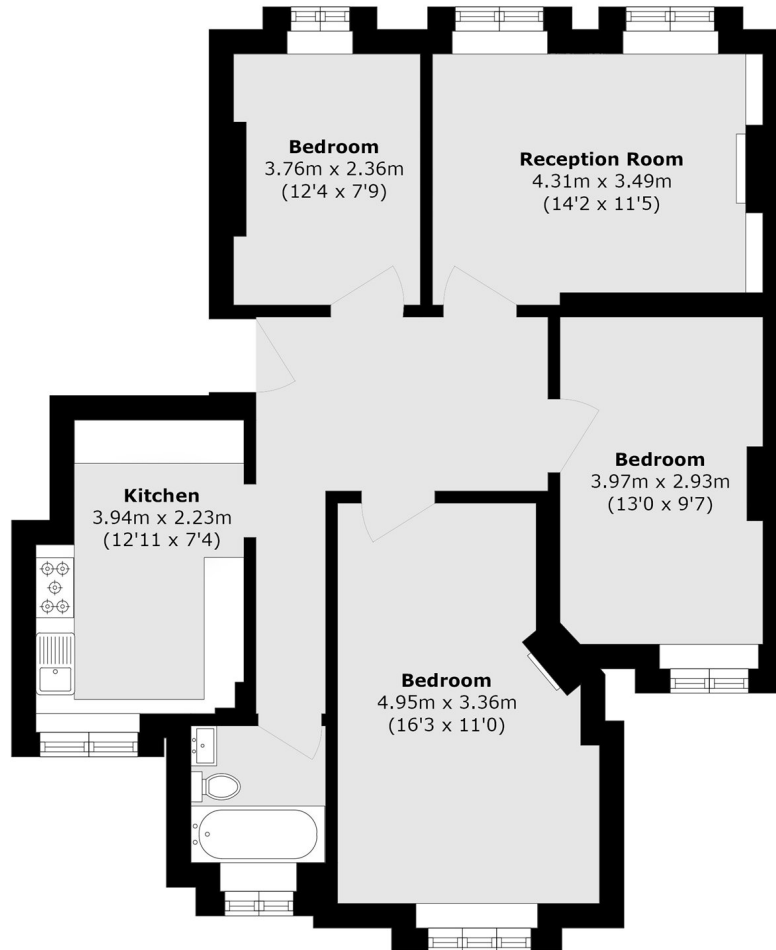
A superbly located three bedroom apartment in the heart of Chiswick. The property is on the first floor and benefits from large windows and period features including two original fireplaces. The recently upgraded kitchen is separate to a spacious lounge, available with no onward chain.

Primely located moments away from the vast amenities Chiswick High Road has to offer including shops, cafés and restaurants. Turnham Green and Stamford Brook tube stations are within walking distance as well as direct bus routes into Hammersmith.

- Three Bedrooms • Separate Kitchen • Spacious Lounge • First Floor • Good Condition • No Onward Chain •

FLETCHERS

ESTATE AGENTS



Total area (approx.): 71.5 sq. m (769.6 sq. ft)

Fletchers Chiswick Turnham Green Sales
58 Turnham Green Terrace, London, W4 1QP
020 8987 3000
chiswicksales@fletcherestates.com

Energy Rating: C. We aim to make our particulars both accurate and reliable. However they are not guaranteed; nor do they form part of an offer or contract. If you require clarification on any points then please contact us, especially if you're traveling some distance to view. Please note that appliances and heating systems have not been tested and therefore no warranties can be given as to their good working order.