



63 Queen Street, Barry

Barry

Guide Price £240,000



63 Queen Street

Barry, Barry

Immaculate 2-bed mid-terrace in Westend. Modern kitchen, stylish bathroom, bright living room, low-maintenance tiered garden, close to schools, parks, beaches, and amenities. Move-in ready.

Council Tax band: C

Tenure: Freehold

EPC Energy Efficiency Rating: D

EPC Environmental Impact Rating: D

- SHOW HOME PRESENTATION
- RECENTLY REPLACED KITCHEN
- RECENTLY REPLACED BATHROOM
- WESTEND LOCATION
- CLOSE TO ALL LOCAL AMENITIES
- CLOSE TO PUBLIC TRANSPORT
- GOOD SCHOOL CATCHMENT AREA
- SHORT DISTANCE TO PARKS AND LOCAL BEACHES





Hallway

Enter through a composite door into inner porch. Matwell flooring Glazed door opening into the hallway. Porcelain tiled floor. Staircase rising to first floor with fitted carpet and handrail. Glazed doors into :-

Lounge

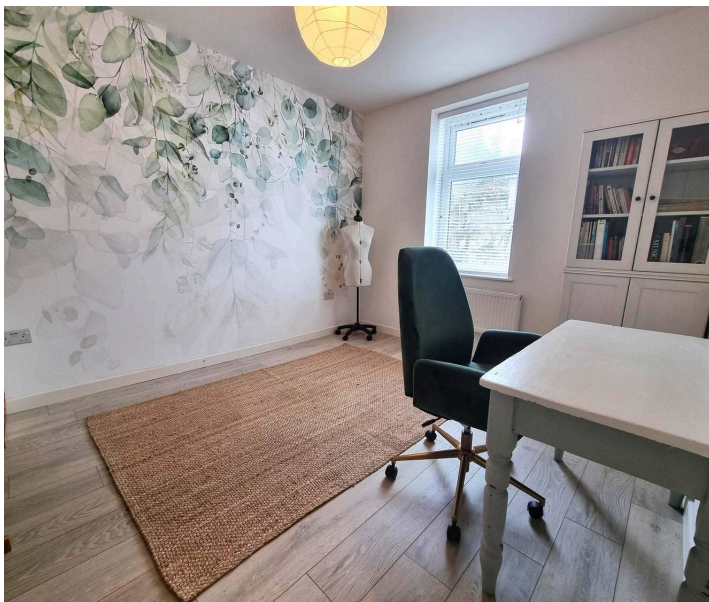
12' 1" x 11' 7" (3.68m x 3.53m)

Wood effect flooring. radiator. Flat plastered walls and high ceiling. Neutral décor. Feature fireplace with ornamental beam. Built in cupboard housing meters. Wall mounted shelving. Two windows to front with slatted blinds.

Kitchen

12' 1" x 12' 8" (3.68m x 3.86m)

A recently replaced stunning fitted kitchen. Wood effect flooring. A range of base and eye level units with complementing work surfaces. Inset single bowl sink with mixer tap over. Integrated washing machine, fridge freezer and dish washer. Built in oven and microwave, Five ring gas burner hob with glass splashback and stainless steel cooker hood. Space for fridge/freezer. Window to rear with slatted blind. Wall mounted cupboard housing combination boiler. Radiator. Built in under stairs storage cupboard. Opening into :-



Dining Room

11' 6" x 7' 4" (3.51m x 2.24m)

Continuation of wood effect flooring. wall mounted modern radiator. Built in banquette seating with storage. built in cabinet with wall mounted display shelving. Window to rear. Sliding patio doors giving a lot of light into the room and access to the rear garden.



Landing

Fitted carpet, neutral décor. Staircase rising to loft room. Modern panelled doors into :-

Bedroom One

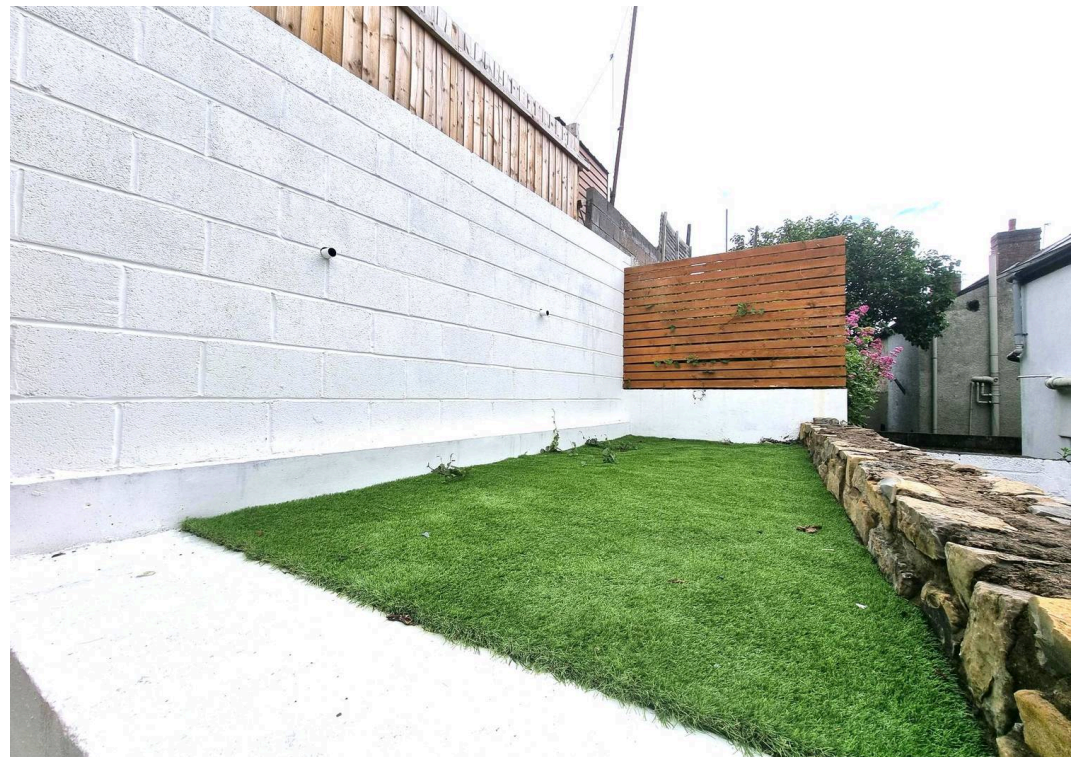
11' 9" x 15' 8" (3.58m x 4.78m)

Fitted carpet flat plastered walls and ceiling. Radiator. Neutral décor. Two windows to front elevation with

GARDEN

A tiered garden with porcelain tiled patio area, Shingled recycling area step leading up to an artificial grass seating area which does catch the sun when its out. Outside double power point and tap.







Daniel Matthew Estate Agents Barry

14 High Street Barry, Vale of Glamorgan - CF62 7EA

01446502806

barry@danielmatthew.co.uk

www.danielmatthew.co.uk/

DanielMatthew
ESTATE AGENTS