



Prideaux Road, SW9

£2,200 Per calendar month

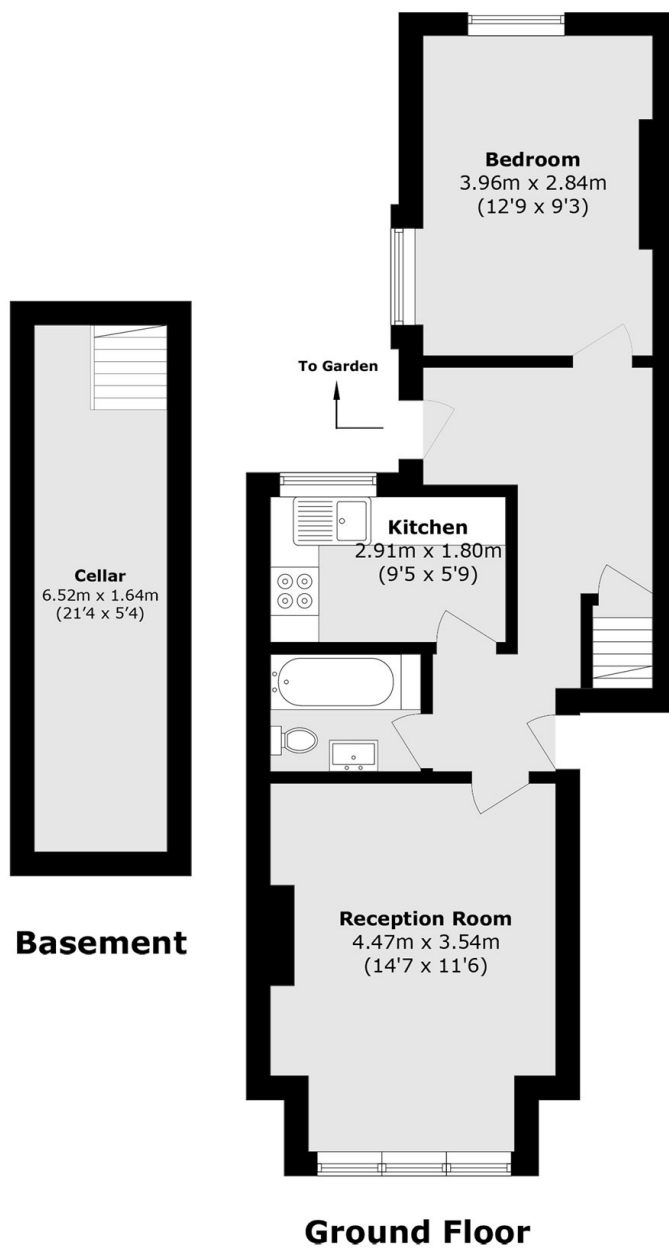
Set on the ground floor, this one bedroom flat offers a spacious reception room, separate kitchen, wooden flooring, neutral interior, cellar space and a private garden. Ideal for a professional couple.

With Clapham High Street, Brixton Village and Stockwell all a walk away, Prideaux Road is ideally located for young sharers who need access to local amenities and the City.

Features

- Ground Floor Flat
- One Double Bedroom
- Spacious Reception Room
- Separate Kitchen
- Wooden Flooring
- Private Garden

Prideaux Road, London, SW9



Total area (approx.): 57.5 sq. m (618.9 sq. ft)

Dexters

Clapham High Street
55 Clapham High Street
London
SW4 7TG
Lettings
020 7483 6364

Energy Rating: D. We aim to make our particulars both accurate and reliable. However they are not guaranteed; nor do they form part of an offer or contract. If you require clarification on any points then please contact us, especially if you're traveling some distance to view. Please note that appliances and heating systems have not been tested and therefore no warranties can be given as to their good working order.

 **RICS** | Regulated
Estate Agent
and Letting Agent

[dexters.co.uk](https://www.dexters.co.uk)