



Sloane Court West, Chelsea SW3

ASHDOWN MARKS  
PROPERTY CONSULTANTS

# Sloane Court West

Chelsea, SW3 4TB

A bright top floor one bedroom flat situated in a well maintained portered building close to Sloane Square.

The flat benefits from generous rooms with high ceilings and enjoys an open aspect over the roof tops of Chelsea.

- Reception Room
- Kitchen/Breakfast Room
- Double Bedroom
- Bathroom
- Lift
- Resident Porter
- Access to Communal Gardens
- Communal heating & hot water
- EPC: Rating E, Council Tax: Band F

**Lease:** 999 from 7<sup>th</sup> February 2017 & Share of Freehold

**Service Charge:** £2,819 per quarter for year ending 31<sup>st</sup> December 2026 to include heating and hot water and contribution to reserve fund. Subject to annual review.

**Guide Price: £1,250,000**



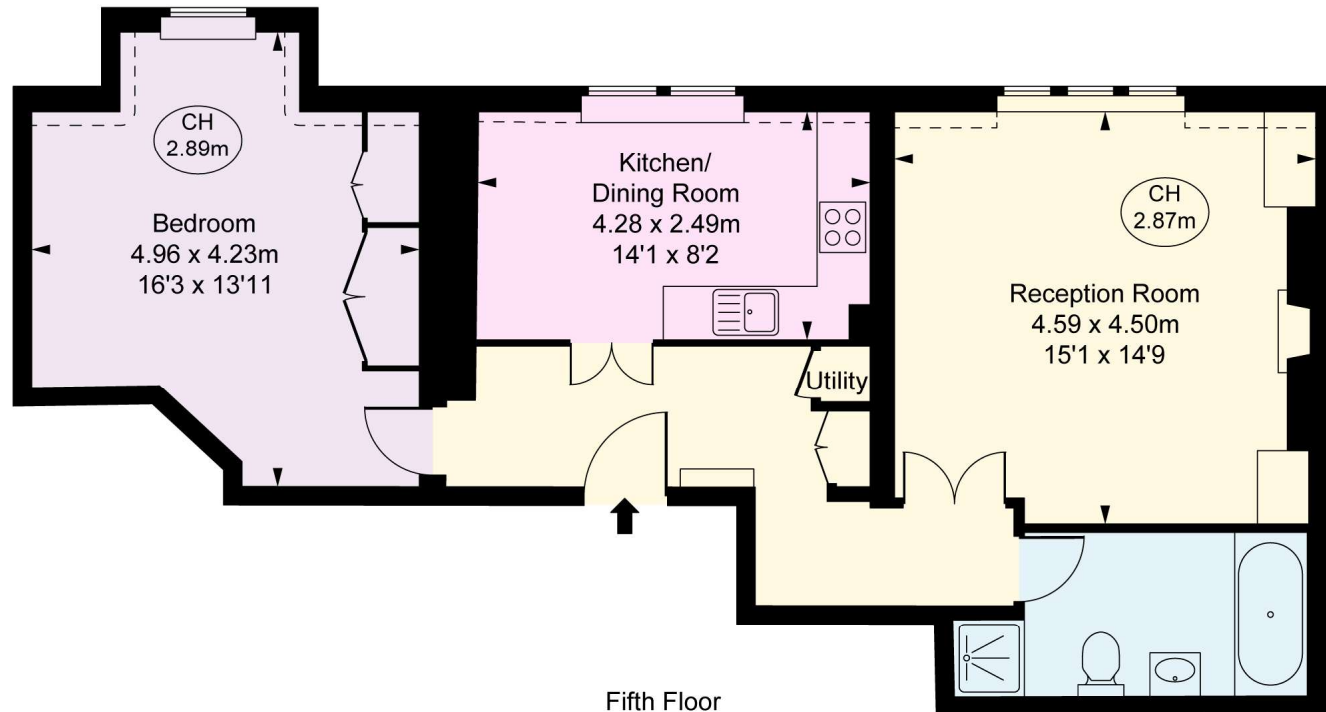
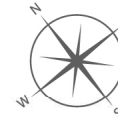


# Sloane Court West, SW3

Approximate Gross Internal Area  
68.34 sq m / 736 sq ft

( Including restricted height  
under 1.5m [ - - - - - ] )

( CH = Ceiling Heights )



Fifth Floor



This plan is not to a given scale. A detailed layout plan to scale for valuation is available on request. All measurements and areas are within 1% tolerance and have been prepared in accordance with industry standards as defined in the RICS Code of Measuring Practice  
© Fulham Performance

Important notice: Ashdown Marks, their clients and any joint agents give notice that: 1: They are not authorised to make or give any representations or warranties in relation to the property either here or elsewhere, either on their own behalf or on behalf of their client or otherwise. They assume no responsibility for any statement that may be made in these particulars. These particulars do not form part of any offer or contract and must not be relied upon as statements or representations of fact. 2: Any areas, measurements or distances are approximate. The text, photographs and plans are for guidance only and are not necessarily comprehensive. It should not be assumed that the property has all necessary planning, building regulation or other consents and Ashdown Marks have not tested any services, equipment or facilities. Purchasers must satisfy themselves by inspection or otherwise.

9 Milner Street, London, SW3 2QB

Tel: 020 7589 3353

[www.ashdownmarks.co.uk](http://www.ashdownmarks.co.uk)

**ASHDOWN MARKS**  
PROPERTY CONSULTANTS