



Mount Avenue, W5

£499,950

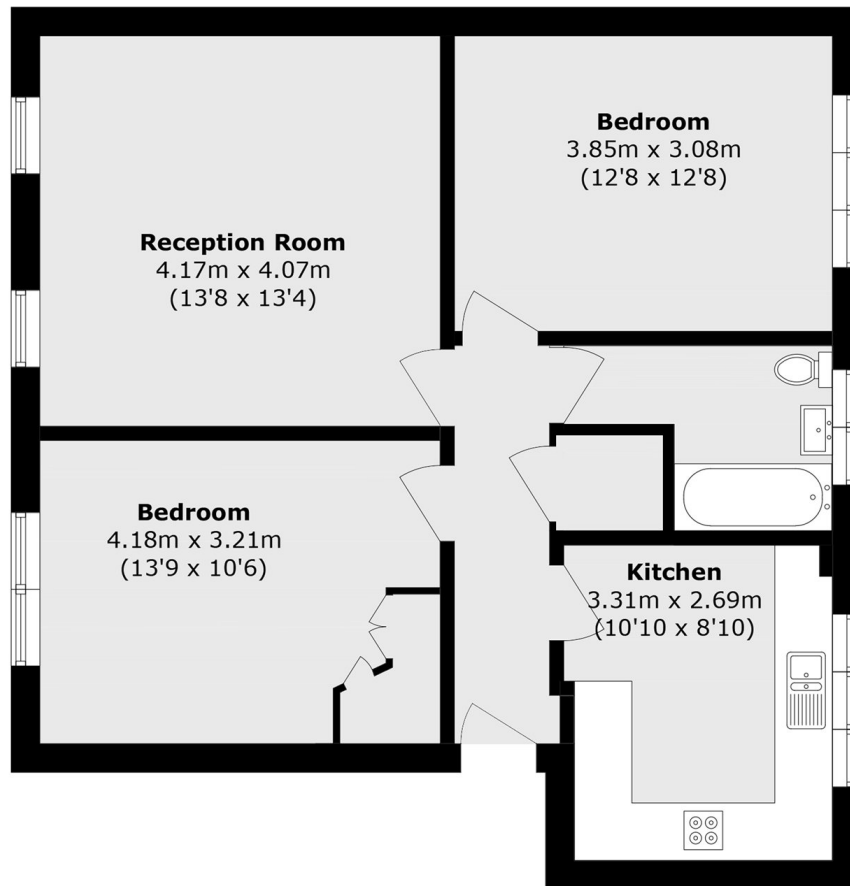
A ground floor apartment with underground parking and a share of freehold with long underlying lease in this well maintained building. This purpose built flat offers a generous living room, separate kitchen and two double bedrooms.

Mount Eaton Court is in a prime location for Ealing Broadway Station (National Rail, Crossrail, Central Line, District Line) and close to the highly regarded Montpelier Primary School.

Features

Second Floor
Two Double Bedrooms
Share Of Freehold
Long Lease 965 Years
Underground Parking
Great Condition

Mount Avenue, London, W5



Total area (approx.): 64.2 sq. m (752.4 sq. ft)