



Foundry Road

Cinderford, GL14 2JS

£305,000

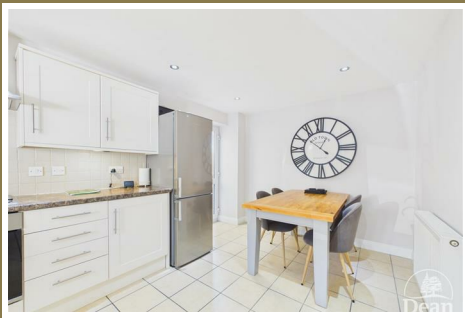


A beautifully presented and spacious family home arranged over three floors, offering bright, modern living throughout.

The ground floor welcomes you with a light and airy entrance hall leading to a contemporary kitchen/dining room, finished with sleek units and ample space for everyday dining, along with a convenient cloakroom. To the rear, a generous lounge enjoys an abundance of natural light and opens out onto the garden, creating an ideal space for both relaxing and entertaining. To the first floor are three well-proportioned bedrooms, including a comfortable second bedroom with en-suite facilities, alongside a stylish family bathroom. The top floor is dedicated to an impressive master suite, featuring a spacious bedroom complemented by a walk-in wardrobe/dressing area, enhanced by Velux windows that flood the space with natural light.

Externally, the property continues to impress with ample off-road parking to the front, while to the rear there is a large, enclosed garden mainly laid to lawn, perfect for families. A raised seating area and a substantial outbuilding/garden room provide excellent additional space for entertaining, working from home, or hobbies.

Cinderford is a thriving market town set in the heart of the Forest of Dean, offering a great range of everyday amenities including supermarkets, schools, healthcare facilities and leisure options. Surrounded by beautiful woodland, it's perfect for those who enjoy walking, cycling and outdoor pursuits, while still providing good access to Gloucester, Cheltenham and the M5.



Approached via UPVC double glazed front door into:

Entrance Hallway:

13'5" x 5'3" (4.09m x 1.61m)

Doors to lounge, kitchen/dining room & cloakroom, smoke alarm, radiator, stairs to first floor landing.

Kitchen/Dining Room:

16'5" x 9'6" (5.01m x 2.92m)

A range of eye level and base units, double glazed UPVC window to front aspect, integrated dishwasher, space for fridge/freezer, gas oven & hob with extractor fan above, space & plumbing for washing machine, UPVC frosted door to garden, power & lighting, radiator.

Lounge:

17'7" x 11'10" (5.38m x 3.61m)

Double glazed UPVC window to rear aspect, double glazed UPVC French doors to garden, power & lighting, radiator, storage cupboard.

Cloakroom:

6'3" x 3'11" (1.91m x 1.20m)

Hand wash basin, frosted UPVC double glazed window, W.C., lighting, heated towel rail.

First Floor Landing:

13'3" x 3'1" (4.04m x 0.94m)

Door to bedrooms two, three, four & bathroom, smoke alarm, frosted double glazed UPVC window, stairs to second floor landing.

Bedroom Two:

13'3" x 11'3" (4.04m x 3.45m)

Radiator, double glazed UPVC window to front aspect, power & lighting, door to en-suite.

En-Suite:

9'8" x 2'11" (2.96m x 0.90m)

Shower cubicle, W.C., heated towel rail, wall mounted mirror with shelf, extractor fan, cupboard housing the boiler.

Bathroom:

7'4" x 6'3" (2.24m x 1.92m)

Frosted UPVC double glazed window, heated towel rail, hand wash basin, panelled bath with mixer tap and shower head over, extractor fan, lighting.

Bedroom Three:

11'9" x 9'6" (3.60m x 2.91m)

Double glazed UPVC window to rear aspect, radiator, power & lighting.

Bedroom Four:

8'6" x 7'10" (2.61m x 2.39m)

Double glazed window to rear aspect, radiator, power & lighting.

Second Floor Landing:

3'7" x 3'2" (1.10m x 0.98m)

Double glazed UPVC frosted window, door to bedroom, lighting, smoke alarm.

Master Bedroom:

18'0" x 10'7" (5.49m x 3.23m)

Velux double glazed window, power & lighting, radiator, door to walk in wardrobe.

Walk-In Wardrobe:

6'10", x 6'7" (2.09m, x 2.03m)

Velux double glazed window, built in wardrobes & shelving, eaves storage.

Tel: 01594 825574

Outside:

The property enjoys a generous plot with an attractive balance of low-maintenance frontage and a spacious, family-friendly rear garden.

To the front, the home is approached via a large tarmac driveway providing ample off-road parking for multiple vehicles. The frontage is well presented, complemented by a neat gravelled border and a striking mature tree which adds character and kerb appeal. The property itself is set back nicely, creating a sense of space and privacy.

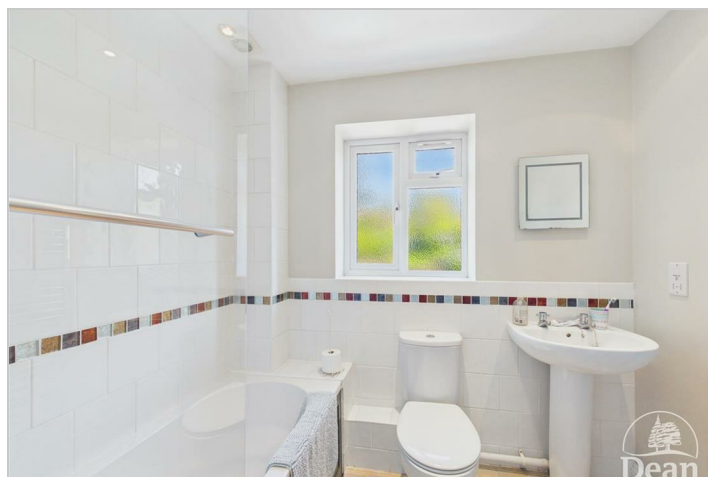
To the rear, the garden is a standout feature — substantial in size and predominantly laid to lawn, making it ideal for

families, entertaining, or those who enjoy outdoor space. The garden is enclosed by a combination of fencing and mature hedging, offering a good degree of privacy. A raised gravelled seating area sits adjacent to the property, perfect for outdoor dining or relaxing.

A versatile summer house is positioned within the garden, ideal for use as a home office, workshop, or hobby space, with an additional shed providing further storage. There is also a smaller greenhouse-style structure, ideal for keen gardeners.

Summer House:

13'10" x 9'8" (4.22m x 2.96m)



Consumer Notes: Dean Estate Agents Ltd have prepared the information within this website/brochure with care and co-operation from the seller. It is intended to be indicative rather than definitive, without a guarantee of accuracy. Before you act upon any information provided, we request that you satisfy yourself about the completeness, accuracy, reliability, suitability or availability with respect to the website or the information, products, services, or related graphics contained on the website for any purpose.

These details do not constitute any part of any Offer, Contract or Tenancy Agreement.

Photographs used for advertising purposes may not necessarily be the most recent photographs, although every effort is made to update photographs at the earliest opportunity. Any reliance you place on such information is therefore strictly at your own risk. All photographic images are under the ownership of Dean Estate Agents Ltd and therefore Dean Estate Agents retain the copyright.

You must obtain permission from the owner of the images to reproduce them.

Tenanted Property – we are not always able to show the most recent condition of a property due to tenants' privacy and we may choose to show the photographs of the property when it was last vacant to at least allow clients some idea of the internal condition. Therefore, we would of course, urge you to view before making any decisions to purchase or rent the property and before any costs.

Energy Performance Certificates are supplied to us via a third party and we do not accept responsibility for the content within such reports.

PRC Certificates – Some ex-local authority properties have been repaired in recent years using the PRC Scheme wherein a certificate has been produced by a qualified property engineer. This certificate does not imply the suitability for a mortgage approval and you must satisfy yourself of the work carried out that may meet your lenders criteria.

As with leasehold property or new build development sites, you are likely to be responsible for a contribution to management charges and/or ground rent or a contribution to the development service charge. Please enquire at the time of viewing.

You may also incur fees for items such as leasehold packs and, in addition, you will also need to check the remaining length of any lease before you complete a mortgage application form.

Please ask a member of our team for any help required before committing to purchase a property and incurring expense.

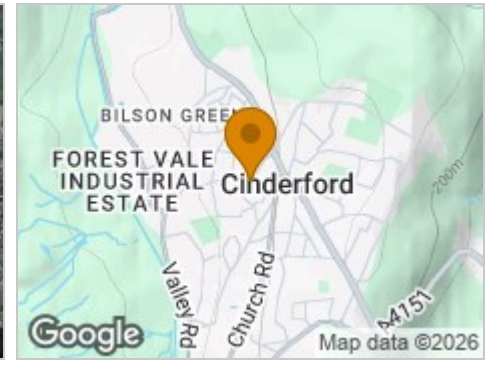
Road Map



Hybrid Map



Terrain Map



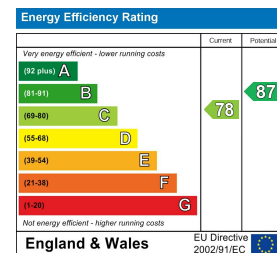
Floor Plan



Viewing

Please contact our Cinderford Office on 01594 825574 if you wish to arrange a viewing appointment for this property or require further information.

Energy Efficiency Graph



These particulars, whilst believed to be accurate are set out as a general outline only for guidance and do not constitute any part of an offer or contract. Intending purchasers should not rely on them as statements of representation of fact, but must satisfy themselves by inspection or otherwise as to their accuracy. No person in this firm's employment has the authority to make or give any representation or warranty in respect of the property.