



Pinkmove

Steepfield

Guide Price £220,000 – £230,000

- Guide Price £220,000 to £230,000
- Sought-after residential location
- Two well-proportioned double bedrooms
- Good-sized rear garden with stunning open views
- Ideal First Time Buyer or Investment Opportunity
- Convenient nearby communal parking facilities
- EPC Rating: C



2 1 1

Pinkmove

01633 746088
team@pinkmove.co.uk



About the property

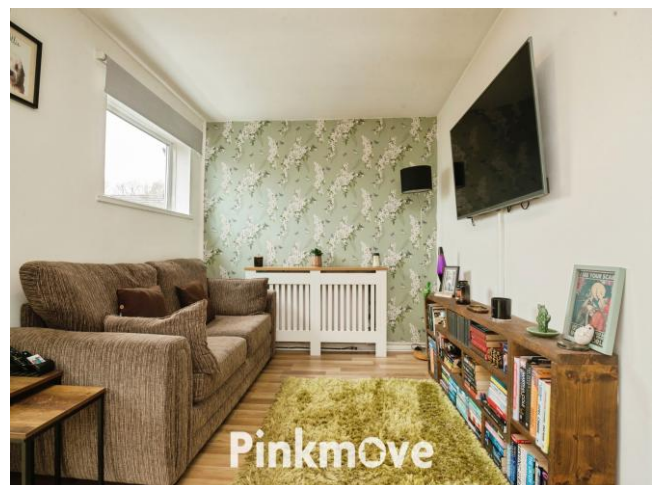
We are pleased to present this attractive semi-detached home, ideally located in a sought-after residential area and offering open views to the rear. The property is well suited to a range of buyers and benefits from nearby parking facilities, with communal parking conveniently located just a short distance away.

The accommodation begins with a welcoming entrance hallway, providing access to a spacious open-plan living and dining room, which enjoys direct access to the rear garden—ideal for relaxing or entertaining. Returning to the hallway, you will find a fitted kitchen leading through to a useful utility area, with side access to both the front and rear gardens.

To the first floor are two well-proportioned double bedrooms, alongside a modern family bathroom featuring contemporary fittings.

Externally, the property benefits from a good-sized rear garden, which enjoys exceptional open views, creating a peaceful and appealing outdoor space.

Viewing is highly recommended to fully appreciate the location, outlook and overall appeal of this home.





Accommodation

Kitchen

Living Room

Utility

Bedroom 1

Bedroom 2

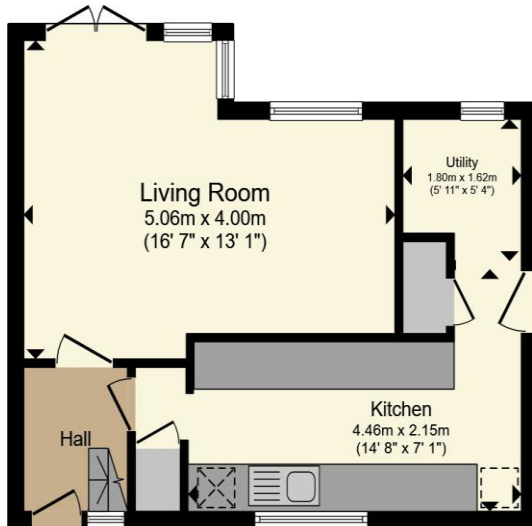
Bathroom

01633 746088

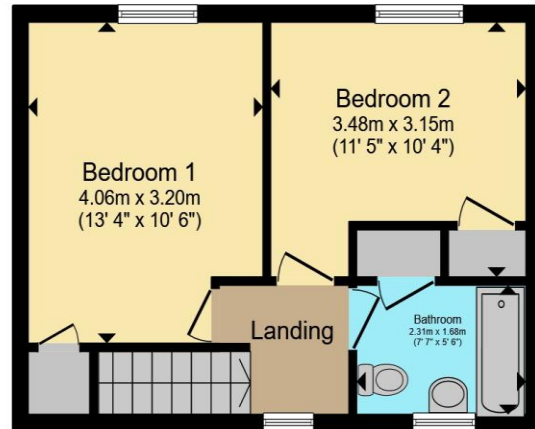
team@pinkmove.co.uk

Pinkmove

Floorplan



Ground Floor



First Floor

Total floor area 70.1 sq.m. (754 sq.ft.) approx

This floor plan is for illustrative purposes only. It is not drawn to scale. Any measurements, floor areas (including any total floor area), openings and orientation are approximate. No details are guaranteed, they cannot be relied upon for any purpose and they do not form part of any agreement. No liability is taken for any error, omission or misstatement. A party must rely upon its own inspection(s). Powered by www.localagent.com

Pinkmove

Important Information

Note while we endeavour to make our sales details accurate and reliable, if there is any point which is of particular interest to you, please contact the office and we will be pleased to confirm the position for you. We have not personally tested any apparatus, equipment, fixtures, fittings or services and cannot verify they are in working order or fit for their purposes. Nothing in these particulars is intended to indicate that carpets or curtains, furnishings or fittings, electrical goods (whether wired or not). Gas fires or light fittings or any other fixtures not expressly included form part of the property offered for sale. This computer generated Floorplan, if applicable, is intended as a general guide to the layout and design of the property. It is not to scale and should not be relied upon for dimensions. Tenure: We cannot confirm the tenure of the property as we have not had access to the legal documents. The buyer is advised to obtain verification from their solicitor or surveyor.

Peter Alan Limited is registered in England and Wales under company number 2073153, Registered Office is Cumbria House, 16-20 Hockliffe Street, Leighton Buzzard, Bedfordshire, LU7 1GN. VAT Registration Number is 500 2481 05. For activities relating to regulated mortgages and non-investment insurance contracts, Peter Alan Limited is an appointed representative of Connells Limited which is authorised and regulated by the Financial Conduct Authority. Connells Limited's Financial Services Register number is 302221. Most buy-to-let

