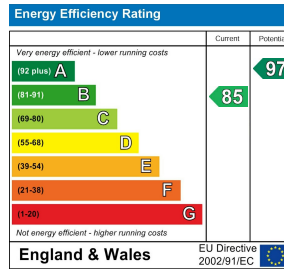
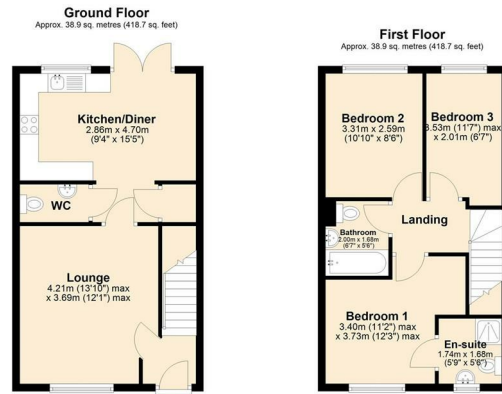


13 | Bartram Close | Hethersett | NR9 3FX

Guide Price £275,000





Description

Offered with no onward chain and a quick sale available, this modern three bedroom semi-detached home is a must view for anyone seeking a property that is ready to move into in the popular village of Hethersett. Built in 2019 and benefitting from the remainder of the NHBC warranty, the property is ideally suited to first time buyers, investors, or those seeking a modern, low maintenance home.

The ground floor welcomes you via an entrance hall leading into a spacious 13'10 max lounge with a front-facing window. There is a convenient WC and storage cupboard located off the inner hallway. To the rear of the property is a 15'5 kitchen/diner spanning the width of the home, featuring patio doors opening onto the enclosed rear garden. The kitchen is well equipped with integrated appliances, including a fridge/freezer, oven, hob, washing machine, and dishwasher.

Upstairs, the property offers three well proportioned bedrooms, with the main bedroom benefitting from an en-suite shower room. A modern family bathroom is accessed from the landing

Key features

- Guide Price £275,000 - £300,000
- 15'5 kitchen/diner spanning the rear with patio doors to the garden
- Three well proportioned bedrooms, including a main bedroom with en-suite shower room
- Enclosed rear garden and driveway parking
- Offered with no onward chain and a quick sale available
- Modern three bedroom semi detached home in a popular location
- Spacious 13'10 max lounge with front-facing window
- Modern family bathroom plus convenient ground floor WC
- Gas central heating, double glazing, and the remainder of the NHBC warranty
- Ideal for first-time buyers, investors, or those seeking a low-maintenance home

Council Tax Band & Local Authority: C, South Norfolk
Deposit Required:

You can also scan the QR code to view the property online. This will take you directly to our website, where you'll find additional photos, detailed floorplan, and all the key information in line with Parts A, B, and C of the Material Information guidance for property listings. You'll also be able to browse our other available properties there.



Butterfly Lettings | 6 Church Lane | Eaton | NR4 6NZ
hello@butterflylettings.co.uk
www.butterflylettings.co.uk
01603 870870



Butterfly Lettings, trading as Butterfly Homes, and its representatives are not authorised to make statements or assurances about the property, whether on their own behalf or on behalf of the client. No responsibility is accepted for any statements contained in these particulars, which do not form part of any offer or contract. We have taken care to ensure that the details provided for each property are accurate at the time of listing. However, the information supplied is intended as a guide only, and we do not obtain confirmation from the seller's legal representative when preparing it. Buyers should verify any leasehold details, charges, or other matters through their own legal representatives. All measurements, areas, and distances are approximate. Fixtures, fittings, and appliances have not been tested, so we cannot guarantee that they are in working order. It should not be assumed that the property has all necessary planning permissions, building regulations, or other consents. We recommend checking the local council's website for information on conservation areas, flood risks, tree preservation orders, planning applications, and other relevant matters. We also advise reviewing the property and surrounding area using Google Maps or Street View before attending a viewing. Photographs are for illustration only and should not be taken as confirmation that any items shown are included in the sale. If any particular detail is important to you, please seek independent professional verification before proceeding. Referral Fees: Butterfly Homes may receive a referral fee from recommended solicitors, mortgage advisers, or other service providers. Any referral arrangement will not affect the cost or quality of the service provided.

We are Butterfly Lettings LTD trading as Butterfly Homes with registered number 15893663 and address C/O Shaw & Co 3 Colegate Norwich Norfolk NR3 1BN