



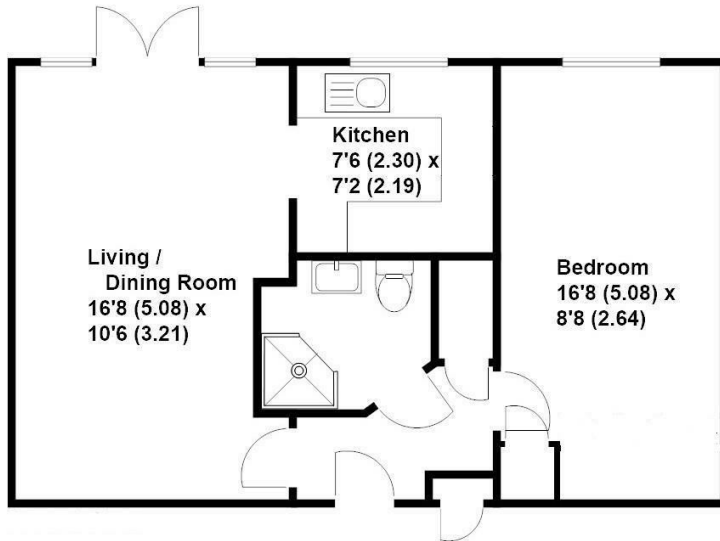
St. Georges Road, Addlestone, KT15 2AY



Available to the market with no onward chain is this one bedroom ground floor apartment with long lease in a popular over 55's (women) & over 60's (men) development in the heart of Addlestone. Just a short stroll from local amenities and ideally situated close to the owners lounge and resident managers office, the apartment consists of a shower room, double bedroom with built in wardrobe and kitchen with ample storage, both with windows overlooking the gardens. The living room has french doors leading out onto a patio area. As well as the owners lounge, further benefits of St Georges Court are visitor parking as well as residents parking, a house manager Monday to Friday and 24hr careline system in the apartments and communal areas.

Leasehold





Approximate Gross Internal Floor Area - 450 sq/ft - 41.8 sq/mtr

Grants Independent has prepared these sales particulars for general guidance purposes only. They do not form or constitute any part of an offer or contract. The services, systems and appliances listed in these details have not been tested by us, and no guarantee is given to their operational ability or efficiency. Lease details, service charges and ground rent are given as a guide and should be checked by your solicitor prior to exchange of contracts. These plans are not drawn to scale and are for representational purposes only. Created by www.visionwithin.co.uk



EPC Rating: 68 D



Grants Homes 60 Church Street, Weybridge, Surrey, KT13 8DL
T: 01932 858885 E: addestone@grantshomes.co.uk