



St. David's Square

London, E14

Asking Price £375,000

Two double bedroom, two bathroom apartment located in St. Davids Square, a popular riverside development close to Island Gardens DLR and the Greenwich foot tunnel.



St. Davids Square

London, E14

- Two-bedroom two-bathroom apartment in St Davids Square
- Parking space
- 24 hour concierge
- Leisure facilities
- Walking distance to Island Gardens DLR
- Chain Free
- Lease 971 years approx
- Service charge £5320 pa approx
- Ground rent £350 pa

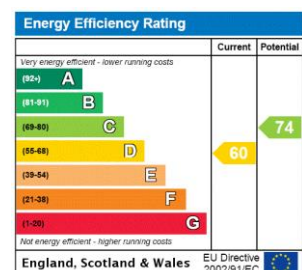


A two bedroom, two bathroom apartment in the ever-popular St David's Square development. Benefiting from excellent on-site facilities, including: 24 hour concierge, residents' gym, swimming pool & sauna, & residents' lounge with full size snooker table & pool table.

The development is also located conveniently close to Island Gardens DLR station, & close to the Thames Path, offering easy access to the nearby Mast House Terrace Pier (for Uberboat / Thames Clipper services all the way to Putney, via Westminster), & to the Greenwich Foot Tunnel in Island Gardens park, which enables under-river access into the centre of Greenwich by the Cutty Sark.

The property comes with an allocated parking space & is offered chain-free.

Tenure: Leasehold – 971 years remaining approx.
Service Charge: £5,483pa approx.
Ground Rent: £350 doubling on each 25th anniversary from the Commencement Date for the first 100 years.
Council Tax Band: E
Local Authority: Tower Hamlets

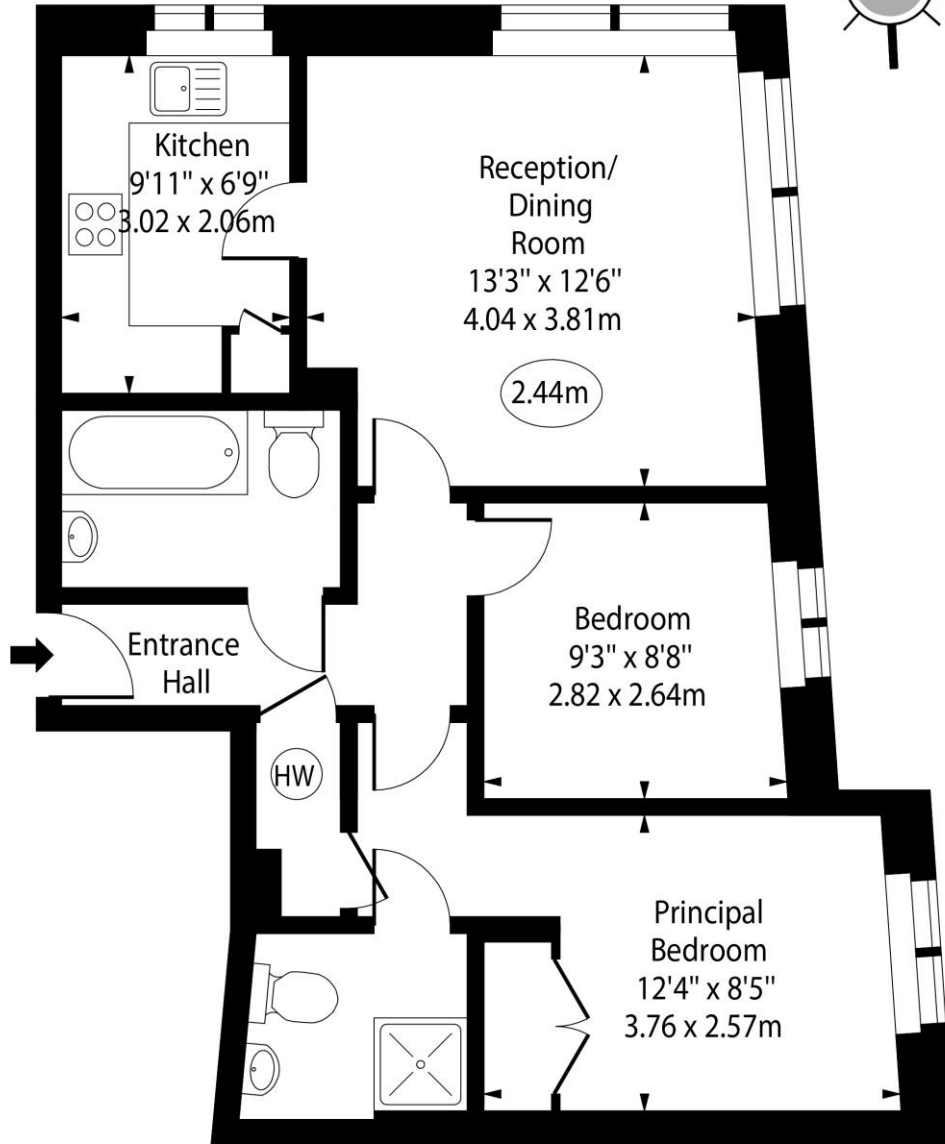
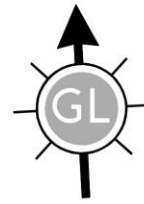


Chestertons Canary Wharf & Greenwich Sales

Harbour Island
 28 Harbour Exchange Square
 London
 E14 9GE
 canarywharf@chestertons.co.uk
 020 7510 8300
 chestertons.co.uk

St. Davids Square, E14

○ - Ceiling Height



First Floor

Approx Gross Internal Area 618 Sq Ft - 57.41 Sq M

For Illustration Purposes Only - Not To Scale

www.goldlens.co.uk

Ref. No. 027115JU

