



Toland Square, SW15
£749,950

Dexters



Toland Square, SW15

A stylish and well-presented three bedroom terraced home located within a quiet residential square in Putney.

The ground floor features a bright reception room with a charming fireplace, leading through to an impressive extended kitchen/dining space with a central island, skylights and doors opening onto a private rear garden ideal for entertaining. The first floor offers two well-proportioned bedrooms and a modern family bathroom, while the top floor provides a spacious principal bedroom with its own Bathroom.

The property further benefits from a front garden, useful storage throughout and a well-balanced layout across three floors, making it perfectly suited for family living.

Toland Square is ideally positioned close to the open green spaces of Putney Heath and Richmond Park, with a great selection of local shops, cafés and schools nearby. Excellent transport links are available from Putney mainline station and East Putney underground (District Line), offering easy access into Central London.

Features

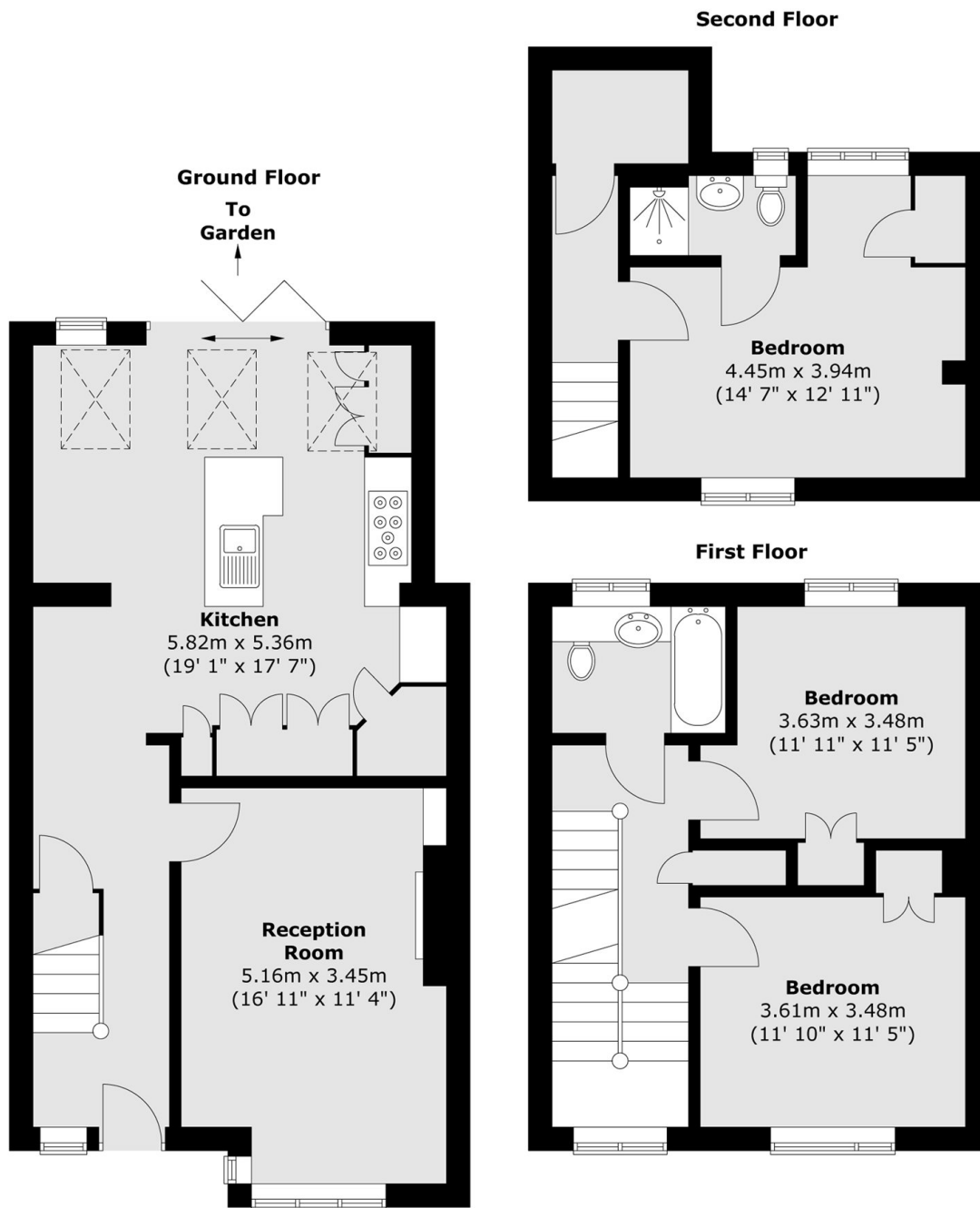
- 1,248 sq. ft
- Three Bedrooms
- Two Bathrooms
- Private Rear Garden
- Extended
- Freehold







Toland Square, London, SW15



Total area (approx.) : 116 sq. m (1248 sq. ft)