



**7E, MURDIESTON
STREET, GREENOCK, PA15 4DT**



 **neillclerk**
ESTATE AGENTS





Description

Occupying a central location this well presented one bedroom TOP FLOOR FLAT offers unfurnished accommodation. Lies convenient for amenities and transport facilities. Specification includes: double glazing, gas central heating and security entry system.

Apartments comprise: Entrance Hallway leading to lounge which is front facing with views towards Murdieston Dam. There is a large storage cupboard. The kitchen has wall and floor mounted white high gloss units and black marble style work surfaces. Appliances include: electric hob, electric oven, fridge and washing machine.

The rear facing double Bedroom benefits from a double storage cupboard. The bathroom comprises of a 3 piece suite with shower over bath.

Applications are subject to financial criteria checks.

LLR: 1562303/280/22032.

LARN: 1901039



Measurements

Entrance Hallway

Lounge

3.68m x 3.48m (12'0" x 11'5")

Kitchen

2.7m x 2.18m (8'10" x 7'1")

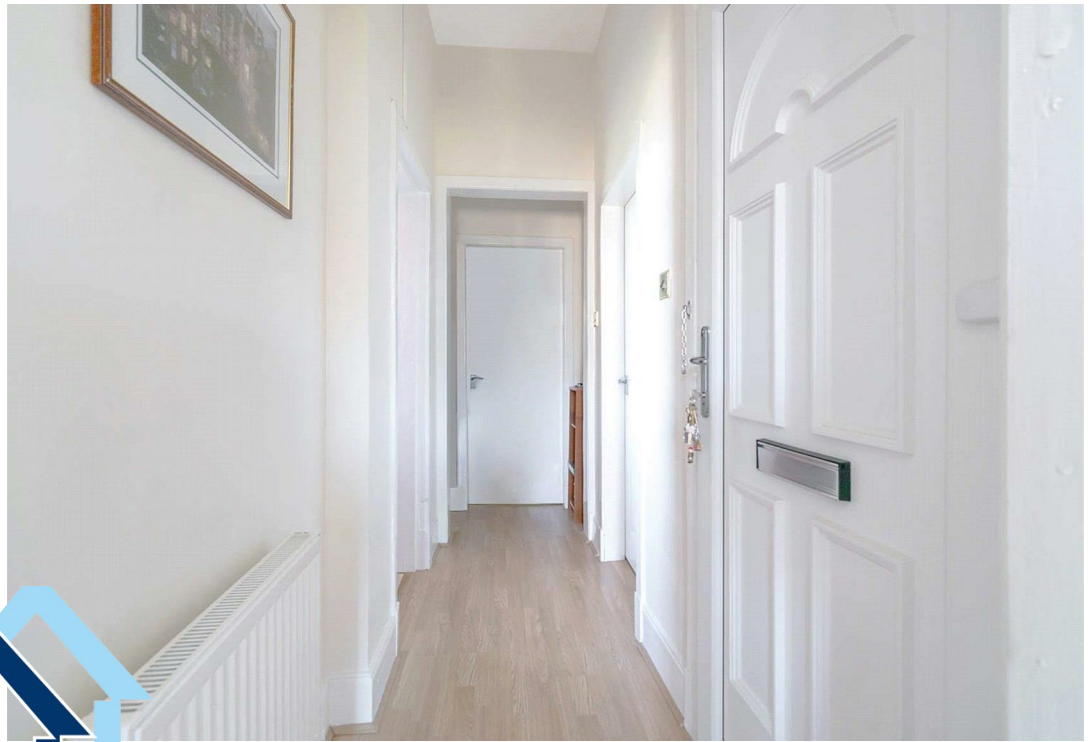
Bedroom

3m x 3.58m (9'10" x 11'8")

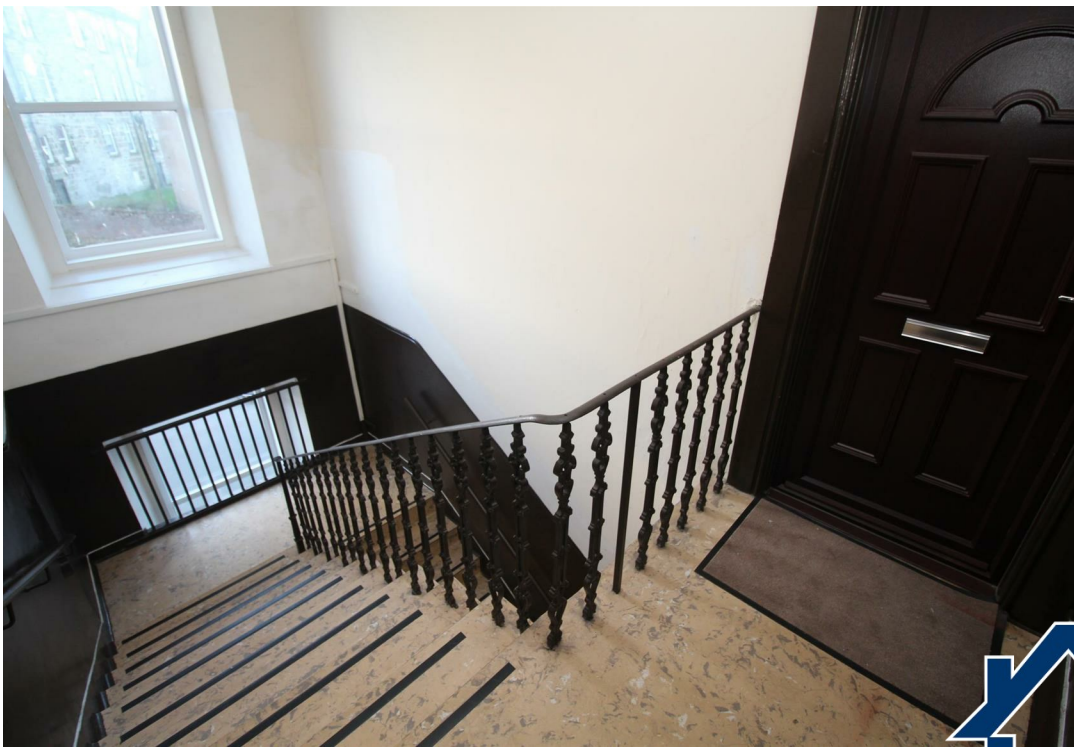
Bathroom

1.98m x 1.98m (6'5" x 6'5")









The
next
step..



To view call 01475 888400. Speak to us 7 days a week until 11pm every day to book your viewing appointment.

House to sell or rent?

Call 01475 888400 to book your free market appraisal.

Require a solicitor?

Ask us to supply a free legal quotation from Neill Clerk & Murray, Solicitors.
www.neillclerkmurray.co.uk

Stay fully up-to-date by following Neill Clerk on:



**60 West Blackhall Street
Greenock
Renfrewshire
PA15 1UY**

t: 01475 888400

e: sales@neillclerk.co.uk

w: www.neillclerk.co.uk



Agents Notes:

These sales particulars are set out as a general outline only, issued in good faith, but do not constitute representations of fact and do not form part of any offer or contract. Any services, equipment, appliances, fittings or central heating systems have not been tested and no warranty is given or implied that these are in working order. All measurements are approximate and for guidance only.

Neither Neill Clerk Estate Agents nor any of its employees or agents has any authority to make or give any representation or warranty whatever in relation to this property.

Find all our properties at: [rightmove](#) [Zoopla](#) [onTheMarket.com](#) [s1homes.com](#)