

# CORNWALL CRESCENT





## Cornwall Crescent, W11

A perfect lateral flat spanning two period buildings in Notting Hill. This top floor flat is flooded with natural light and provides excellent entertaining space with two receptions but potential to convert one to an additional bedroom. The two double bedrooms are spacious along with the separate kitchen. Cornwall Crescent is well located for the amenities of Portobello Road and Goldborne Road with easy access to the Hammersmith, City and Circle Line at Ladbrooke Grove.

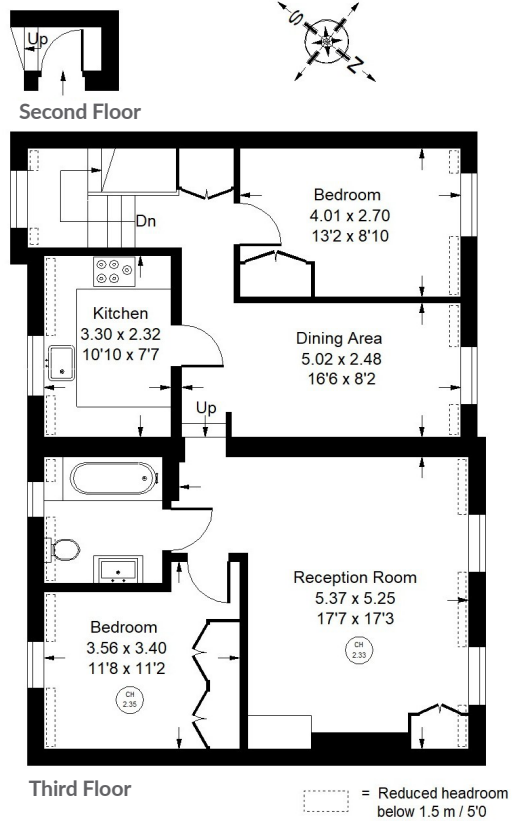




# Cornwall Crescent, W11 - Leasehold

Local Authority - Royal Borough of Kensington & Chelsea

Approx. Gross Internal Area = 84 sq m / 904 sq ft



- Two bedrooms
- Two bathrooms
- Lateral flat
- Flooded with natural light
- Council Tax Band: F
- EPC Rating: D



Whilst every attempt has been made to ensure the accuracy of the floor plan, measurements are approximate and not to scale. No guarantee is given on the total square footage of the property quoted on the plan. Figures given are for guidance. Plan is for illustration purposes only, not to be used for valuations.