



56 Great Wheatley Road, Rayleigh

£1,400,000 Freehold

5 Large Double Rooms • Beautifully finished throughout • 85ft Garden • Large Driveway for 6 cars • Integrated Garage • Utility Room and W/C • Open Plan Kitchen/Dining/Living Space • Large Balcony off of Bedroom 1 with beautiful country views • Over 3500 sqft of living space • Set on the sought after Great Wheatley Road

Nest.





If you've ever found yourself saying, "I wish we just had a bit more space," this home may finally put that conversation to rest.

Occupying a prestigious position on Great Wheatley Road, this impressive five-bedroom detached residence offers over 3,500 square feet of beautifully designed accommodation, combining substantial proportions with refined finishes throughout.

A striking galleried landing with skylights above creates an immediate sense of space and light, while the heart of the home is undoubtedly the outstanding open-plan kitchen, dining and living area. Designed for both family life and entertaining, this exceptional space is complemented by a separate utility room and convenient downstairs w/c.

The accommodation continues with a comfortable living room and dedicated games room, providing flexibility for modern lifestyles. All five bedrooms are generous doubles, with three enjoying en-suite facilities and two benefitting from walk-in wardrobes.

The principal suite is particularly impressive, featuring a vaulted gable ceiling, private balcony and far-reaching countryside views. Complete with its own en-suite and dressing space, it offers a luxurious retreat away from the rest of the home.

Outside, a substantial driveway provides parking for up to six vehicles alongside an integrated garage. The rear garden offers an excellent space to relax, entertain and enjoy the surrounding setting.

Great Wheatley Road remains one of the area's most sought-after addresses, offering easy access to highly regarded schools, local amenities and transport links.

Combining space, style and an exceptional location, this is a home designed to accommodate family life on any scale.

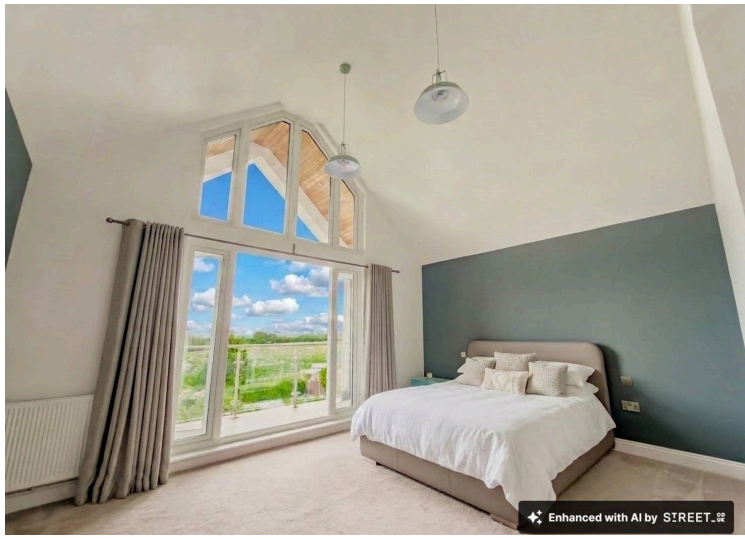
Council Tax band: G

Tenure: Freehold

EPC Energy Efficiency Rating: E

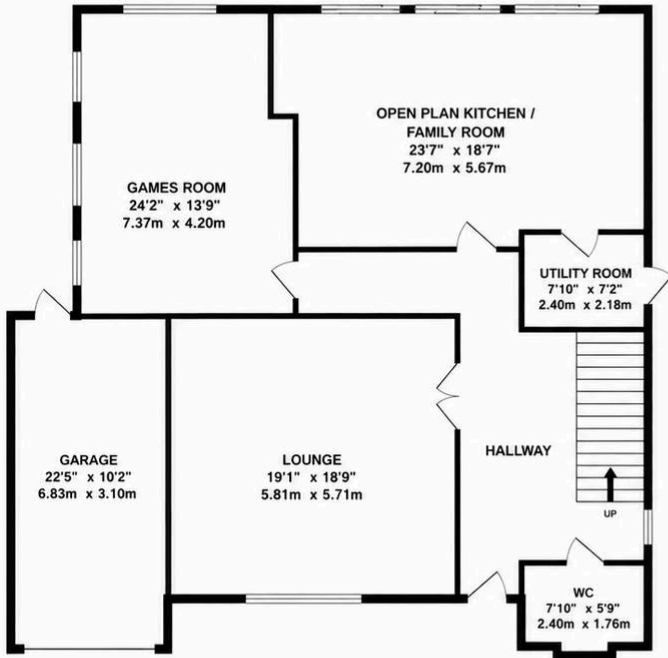
EPC Environmental Impact Rating: E



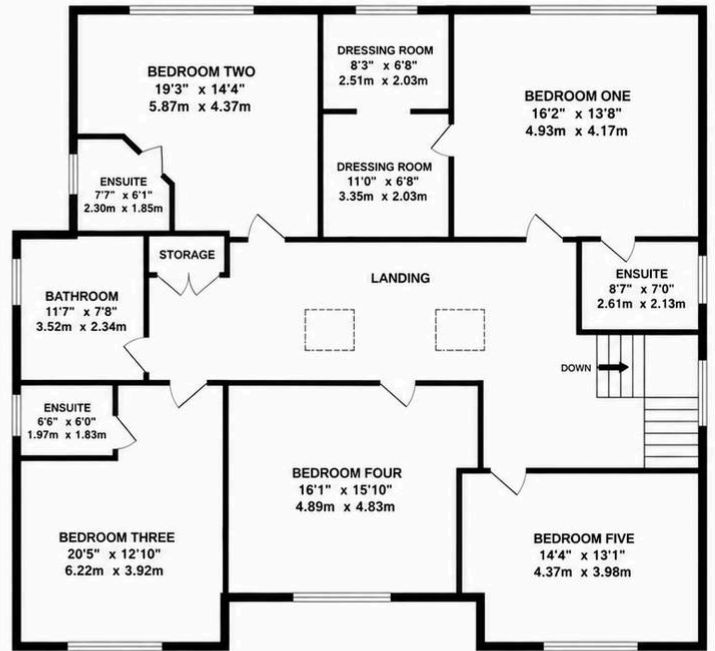




GROUND FLOOR
1702 sq.ft. approx.
158.1 sq.m. approx.



1ST FLOOR
1829 sq.ft. approx.
169.9 sq.m. approx.



TOTAL FLOOR AREA : 3531 sq.ft. approx. (328.0 sq.m. approx.)

Whilst every attempt has been made to ensure the accuracy of the floorplan contained here, measurements of doors, windows, rooms and any other items are approximate and no responsibility is taken for any error, omission or mis-statement. This plan is for illustrative purposes only and should be used as such by any prospective purchaser. The services, systems and appliances shown have not been tested and no guarantee as to their operability or efficiency can be given.
Made with Metropix ©2025

