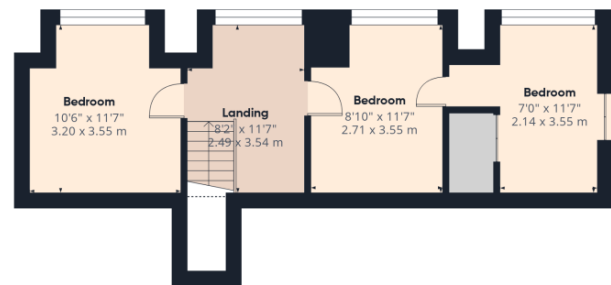


Floor 0 Building 1



Floor 1 Building 1



Approximate total area⁽¹⁾
 1386 ft²
 128.7 m²

Reduced headroom
 20 ft²
 1.8 m²

(1) Excluding balconies and terraces

Reduced headroom
 Below 5 ft/1.5 m

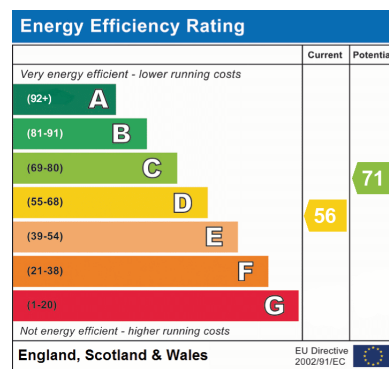
Calculations reference the RICS IPMS 3C standard. Measurements are approximate and not to scale. This floor plan is intended for illustration only.

GIRAFFE360



Greenway, Highleadon, GL18 1HG

A truly exceptional and highly versatile family home, offering an abundance of space both inside and out, with breathtaking rural views.



Address: Greenway, Highleadon, GL18 1HG

Guide price £495,000



Features

- Spacious four bedroom detached home with versatile living accommodation
- Impressive kitchen/diner & dining area – perfect for family life and entertaining
- wood burner & garden access
- Stunning rural outlooks with far-reaching countryside views to the rear
- Bright and spacious lounge with feature fireplace
- Four bedrooms including generous ground floor master suite