



## 19 Yellowstone Close, Coventry – CV6 2NX

Offers in Region of £170,000

# 19 Yellowstone Close

Coventry, Coventry

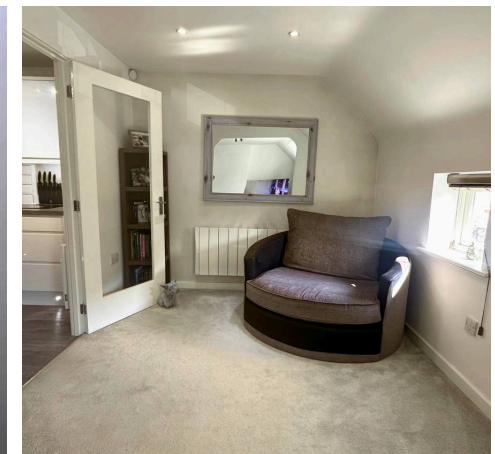
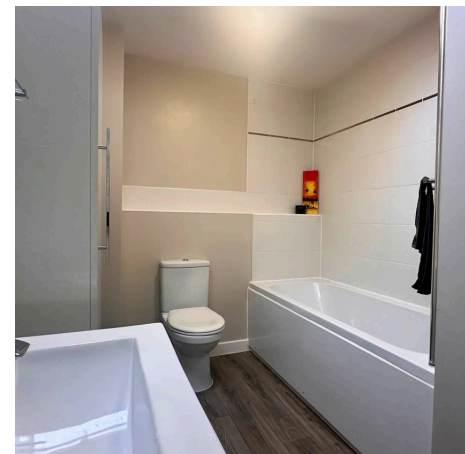
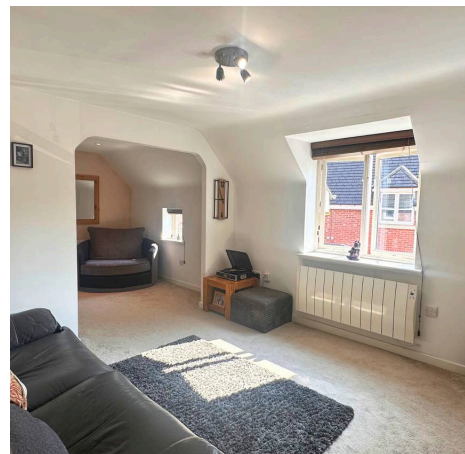
Stylish modern coach house in a quiet cul-de-sac.  
Beautiful lounge/diner, modern kitchen, serene  
bathroom, master bedroom, garage, parking,  
Electric heating, UPVC windows. Ideal for first time  
buyers or professionals. EPC B.  
Council Tax band: A

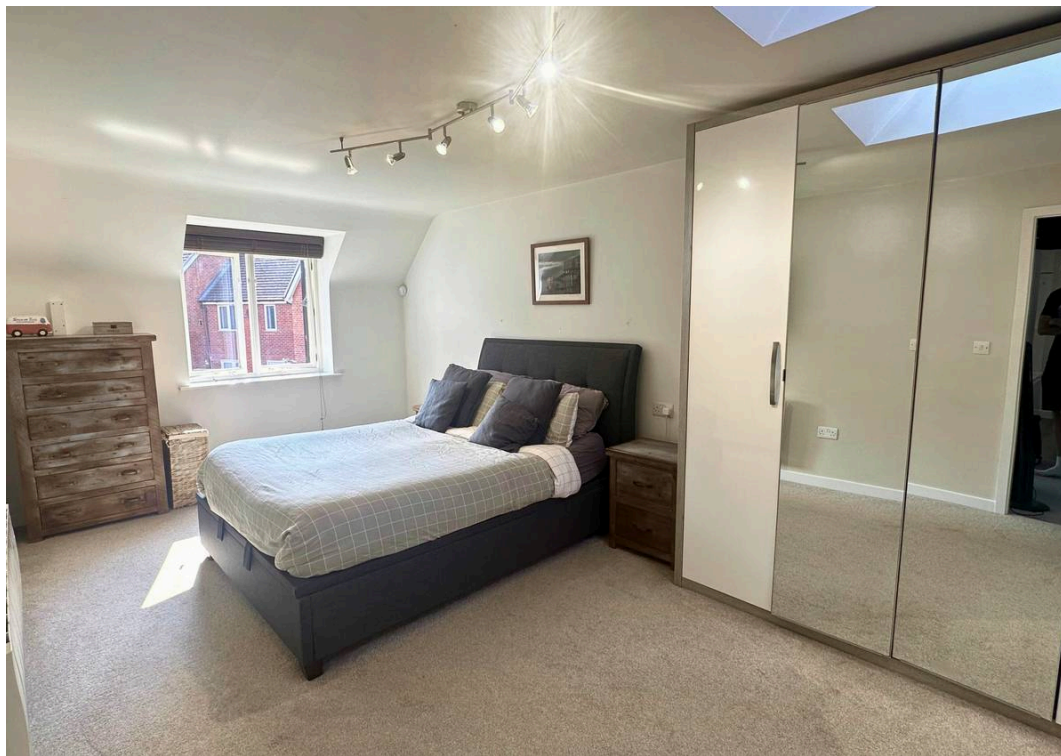
Tenure: Freehold

EPC Energy Efficiency Rating: C

EPC Environmental Impact Rating: D

- Modern Coach House
- Lovely Cul-De-Sac Location
- Beautiful Lounge / Diner
- Superb Modern Fitted Kitchen
- Gorgeous Bathroom
- Master Bedroom
- Garage And Parking
- Electric Heating - UPVC Double Glazing
- Excellent Local Amenities And School Catchments
- EPC B





**Location**

Yellowstone Close

**Details**

1 bedroom  
1 bathroom

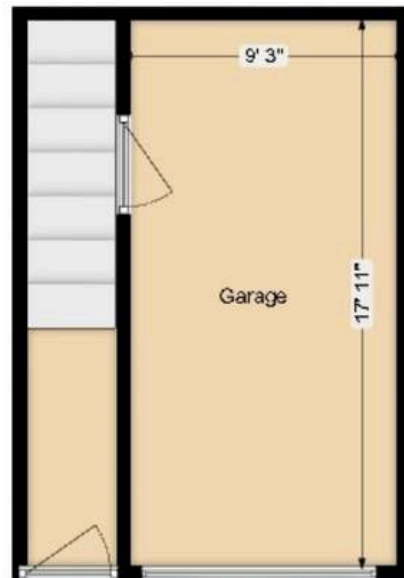


**Disclaimer**

Although every care has been taken, measurements are approximate & no responsibility is taken for error.

Plan is for illustrative purposes only.

**Ground Floor**



**First Floor**

