



Bristol Gardens | | London | W9

Asking Price - £2,500 Per month



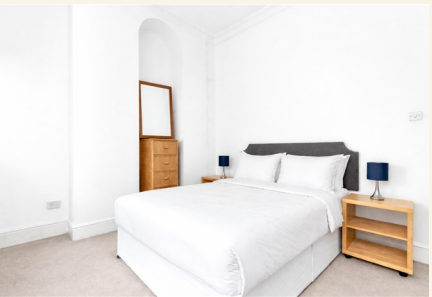
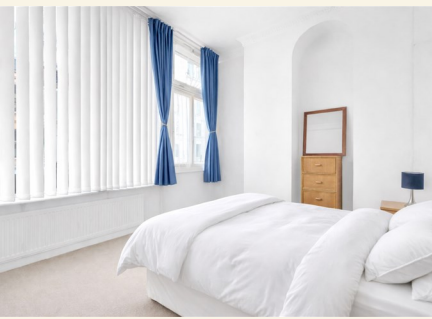
- Spacious 1-bedroom flat
- Modern bathroom
- Bright reception room
- Located in Bristol Gardens
- Close to local amenities
- Easy access to transport
- Conversion
- Quiet residential area
- Viewing highly recommended

Set within the highly regarded Bristol Gardens, this attractive flat conversion offers well-balanced accommodation with a bright and comfortable feel throughout.

The property comprises a generously sized bedroom and a well-presented reception room, providing a versatile living space with ample room for both relaxation and day to day living. Large windows allow for an abundance of natural light, enhancing the sense of space and creating a welcoming environment. The layout has been carefully arranged to make efficient use of every area, resulting in a practical and easy flowing home.

The kitchen is neatly integrated and designed for convenience, offering sufficient storage and workspace. The bathroom is well maintained and fitted with modern fixtures, ensuring functionality alongside a clean and tidy finish.

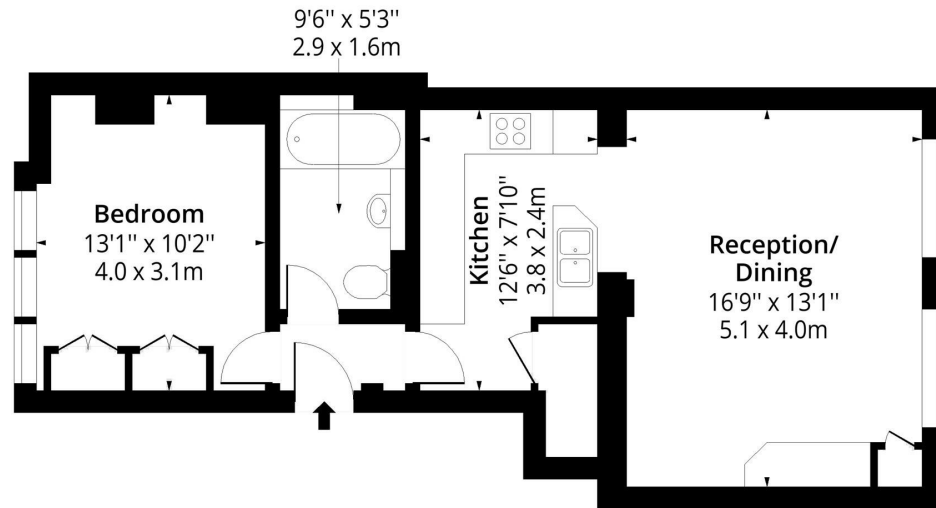




Positioned within Bristol Gardens, the property benefits from a location known for its character and accessibility. A wide range of local amenities including independent cafes, restaurants, and shops are close by, along with nearby green spaces. Transport links are easily accessible, providing reliable connections into central London and surrounding areas.

# Bristol Gardens W9

Approx. Gross Internal Area 564 Sq Ft - 52.40 Sq M



## Ground Floor

Floor Area 564 Sq Ft - 52.40 Sq M

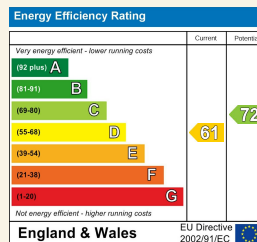


Measured according to RICS IPMS2. Floor plan is for illustrative purposes only and is not to scale. Every attempt has been made to ensure the accuracy of the floor plan shown, however all measurements, fixtures, fittings and data shown are an approximate interpretation for illustrative purposes only. 1 sq m = 10.76 sq feet.

lpaplus.com

Date: 14/4/2026

Council Tax Band F EPC Rating D



24 Bristol Gardens  
 London  
 W9 2JQ  
 hello@draperlondon.com  
 0203 143 1900