



Princes Court

Rotherhithe, SE16

Asking Price £550,000

Set across two floors, the property offers impressive waterside views, creating a peaceful and scenic living

CHESTERTONS



Princes Court

Rotherhithe, SE16

Welcome to this beautifully presented two bedroom, two bathroom apartment located in the highly desirable Princes Court development, SE16. Set across two floors, the property offers impressive waterside views, creating a peaceful and scenic living environment in one of South East London's most sought after riverside locations.

This spacious apartment is finished to a high standard throughout and boasts a well designed layout ideal for both comfortable living and entertaining. The heart of the home is a generous open plan living and dining area, which opens out onto a private balcony overlooking the water – perfect for enjoying your morning coffee or winding down in the evening.

There are two well proportioned double bedrooms. Ample natural light floods the property through large windows, enhancing the sense of space and tranquillity.



Additional features include lift access, secure entry and well maintained communal areas. The apartment is offered on a leasehold basis and would make an ideal purchase for first time buyers, professionals or investors seeking a premium waterside location.

Princes Court benefits from excellent transport links, with Canada Water and Surrey Quays stations both within easy reach, offering quick access to Canary Wharf, London Bridge and the West End. The local area is rich in amenities, with riverside walks, parks, cafés and restaurants all nearby.

Tenure: Leasehold 85 years 8 months

Service Charge: £0

Ground Rent: £337.5

Local Authority: London Borough of Southwark

Council Tax Band: E

Score	Energy rating	Current	Potential
92+	A		
81-91	B		
69-80	C	80 C	81 B
55-68	D		
39-54	E		
21-38	F		
1-20	G		

Chestertons Surrey Quays Sales

2 Plough Way

London

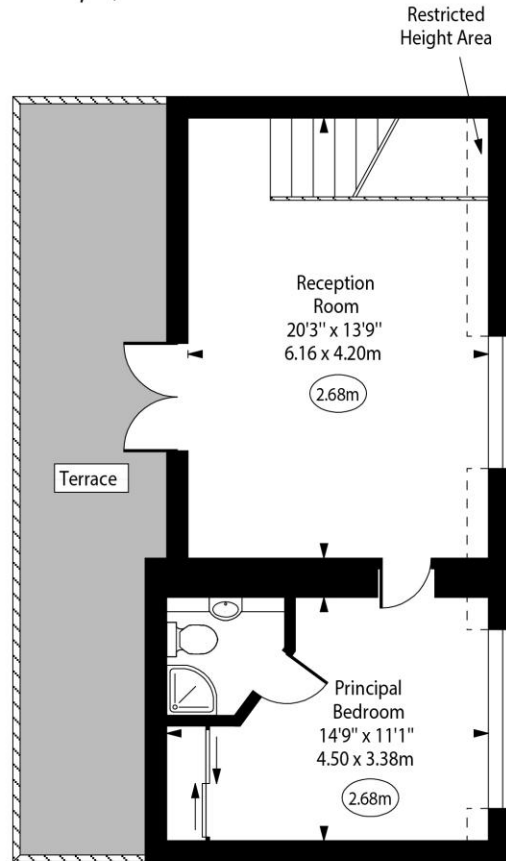
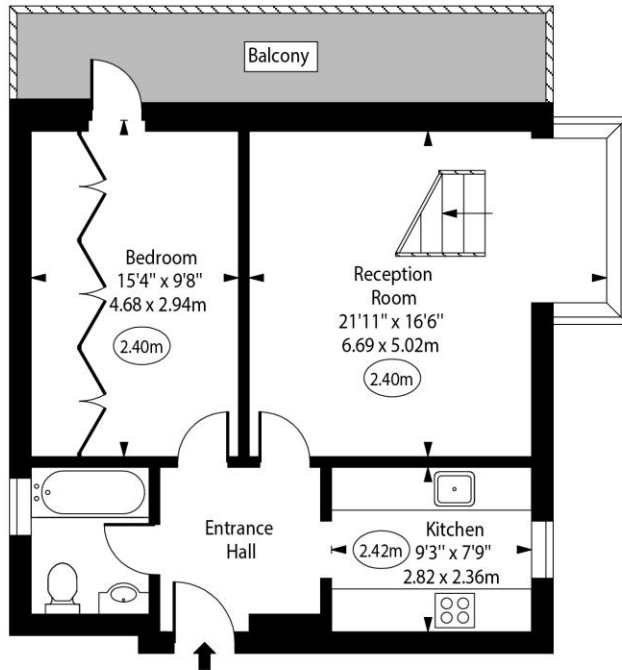
SE16 2EU

+44 (0)20 7378 0644

chestertons.co.uk

Princes Court, SE16

○ - Ceiling Height



Second Floor

Third Floor

Approx Gross Internal Area

1000 Sq Ft - 92.90 Sq M

Approx. Floor Area Including Restricted Heights

1018 Sq Ft - 94.57 Sq M

Every attempt has been made to ensure the accuracy of the floor plan shown. However, all measurements, fixtures, fittings, and data shown are approximate interpretations and for illustrative purposes only. Measured according to the RICS. Not To Scale.

www.goldens.co.uk
Ref. No. 028793J

