



**Mundesley Road, North Walsham NR28 0DB**

**welcome to**

**Mundesley Road, North Walsham**

This immaculately presented two bedroom, end-terrace house set within close proximity to North Walsham town centre and local amenities would make an ideal family home or investment purchase and is being sold with no onward chain!



This immaculately presented two bedroom, two en-suite end terrace house close to the town centre of North Walsham is being sold with no onward chain! The property offers accommodation comprising kitchen/ diner, living room, cloakroom and conservatory/ utility room on the ground floor. The first floor boasts two double bedrooms, the master having a dressing room and en-suite shower room, bedroom two offers a built in wardrobe and Juliet balcony overlooking the rear garden. Externally the property offers off-road parking on a brick weave driveway and a well maintained, mature rear garden which is fully enclosed, laid to lawn with patio areas, trees, shrubs and plants.

### Kitchen

Fitted kitchen with a range of wall and base units with work surfaces over, island with electric oven and hob and cooker hood above, ceramic sink, space for under counter fridge, space for under counter freezer, built in dishwasher, tiled splashback, airing cupboard housing hot water tank, gas central heating boiler and electrical consumer unit, radiator, tiled flooring, spotlights, double glazed window to the side aspect, a double glazed door to the side aspect and archway into dining room.

### Dining Room

Double glazed double doors into the conservatory, double glazed window to the side aspect, stairs to the first floor, under stair storage cupboard, tiled flooring and spotlights.

### Conservatory/ Utility Room

Of uPvc constructions with brick base, double glazed windows to the side and rear aspects, double glazed sliding doors into the rear garden, work surfaces, plumbing for washing machine, space for tumble dryer, storage cupboards, radiator and tiled flooring.

### Cloakroom

WC, wash hand basin, towel rail, extractor fan, part tiled walls and tiled flooring.

### Lounge

Double glazed windows to the front and side aspects with fitted blinds, television and telephone points, radiator, wall lights, ceiling coving and wooden flooring.

### First Floor Landing

Double glazed window to the side aspect with frosted glass, access into loft space, wall lights, spotlights, radiator and carpeted flooring.

### Bedroom One

Double glazed windows to the front and side aspects with fitted blinds, wall lights, television point, telephone point, ceiling coving, radiator and carpeted flooring.

### En Suite/ Dressing Room

Walk in wardrobe/ dressing room with shelving, clothes rail, spotlights, double glazed window to the side aspect, radiator and carpeted flooring. En suite shower room comprising shower cubicle, WC, wash hand basin, part tiled walls, wooden flooring, extractor fan and a double-glazed window to the side aspect.

### Bedroom Two

Double glazed double doors to the rear aspect with Juliet balcony overlooking the rear garden, built in wardrobe, television point, wall lights, radiator and carpeted flooring.

### En Suite

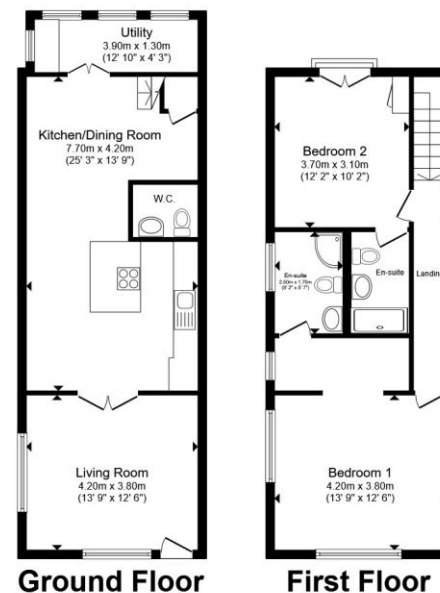
Suite comprising shower cubicle, WC, wash hand basin, towel rail, extractor fan, radiator, part tiled walls and wooden flooring.

### Exterior

The front of the property offers brick-weave driveway parking for 2/3 vehicles, gated access to the rear garden and a bordering flower bed to the left-hand side. The rear of the property continues the driveway allowing access to the neighbouring property via a double gate. The rear garden is mainly laid to lawn with patio areas, matures trees, shrubs and bushes.

### Agent's Note

We understand the neighbouring house has a right of way across the driveway to the rear.



Total floor area 103.0 m<sup>2</sup> (1,109 sq.ft.) approx

This floor plan is for illustrative purposes only. It is not drawn to scale. Any measurements, floor areas (including any total floor area), openings and orientation are approximate. No details are guaranteed, they cannot be relied upon for any purpose and they do not form part of any agreement. No liability is taken for any error, omission or misstatement. A party must rely upon its own inspection(s). Powered by [www.propertybox.io](http://www.propertybox.io)



**view this property online** [williamhbrown.co.uk/Property/NWM110040](http://williamhbrown.co.uk/Property/NWM110040)



welcome to

## Mundesley Road, North Walsham

- No Onward Chain
- Close Proximity to Town Centre & Amenities
- Two Double Bedrooms with En-Suite Shower Rooms
- Open Plan Kitchen/ Diner
- Conservatory/ Utility Room
- Driveway Parking
- Beautifully Presented Throughout

Tenure: Freehold EPC Rating: D

Council Tax Band: B

# £260,000



Please note the marker reflects the postcode not the actual property

**view this property online** [williamhbrown.co.uk/Property/NWM110040](http://williamhbrown.co.uk/Property/NWM110040)



Property Ref:  
NWM110040 - 0006

1. MONEY LAUNDERING REGULATIONS Intending purchasers will be asked to produce identification documentation at a later stage and we would ask for your co-operation in order that there is no delay in agreeing the sale. 2. These particulars do not constitute part or all of an offer or contract. 3. The measurements indicated are supplied for guidance only and as such must be considered incorrect. Potential buyers are advised to recheck measurements before committing to any expense. 4. We have not tested any apparatus, equipment, fixtures or services and it is in the buyers interest to check the working condition of any appliances. 5. Where an EPC, or a Home Report (Scotland only) is held for this property, it is available for inspection at the branch by appointment. If you require a printed version of a Home Report, you will need to pay a reasonable production charge reflecting printing and other costs. 6. We are not able to offer an opinion either written or verbal on the content of these reports and this must be obtained from your legal representative. 7. Whilst we take care in preparing these reports, a buyer should ensure that his/her legal representative confirms as soon as possible all matters relating to title including the extent and boundaries of the property and other important matters before exchange of contracts.

William H Brown is a trading name of Sequence (UK) Limited which is registered in England and Wales under company number 4268443, Registered Office is Cumbria House, 16-20 Hockliffe Street, Leighton Buzzard, Bedfordshire, LU7 1GN. VAT Registration Number is 500 2481 05.

  
william h brown



**01692 402861**



NorthWalsham@williamhbrown.co.uk



16 Market Street, NORTH WALSHAM, Norfolk,  
NR28 9BZ



**williamhbrown.co.uk**