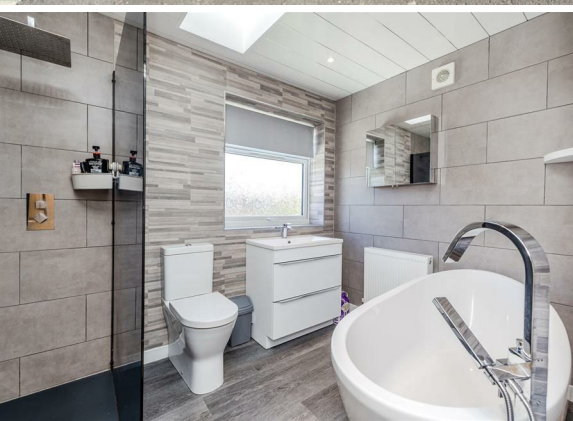


31 Westbury Avenue  
Walker  
Newcastle Upon Tyne  
NE6 4YL

Offers Over  
£155,000

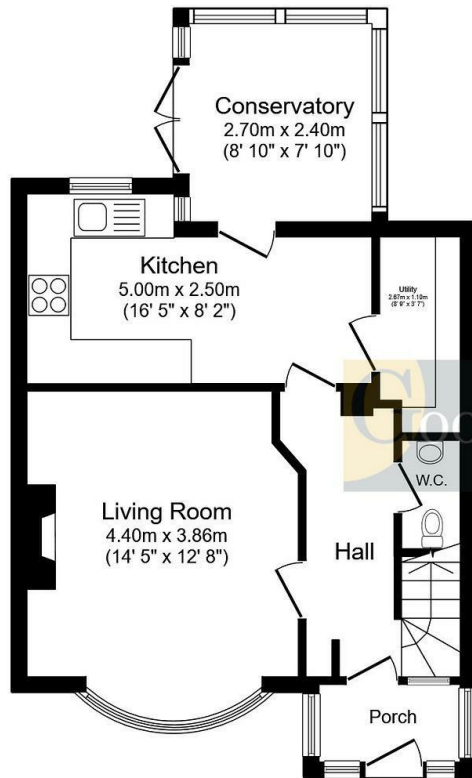


31 Westbury Avenue  
Walker  
Newcastle Upon Tyne  
NE6 4YL

- Extended 2 bedroom end terrace house
- Modern extended kitchen
- Utility
- Great modern bathroom
- Enclosed rear garden with a summerhouse
- Immaculately presented
- Downstairs w/c
- Conservatory
- Double width driveway
- Ideal for a first time buyer

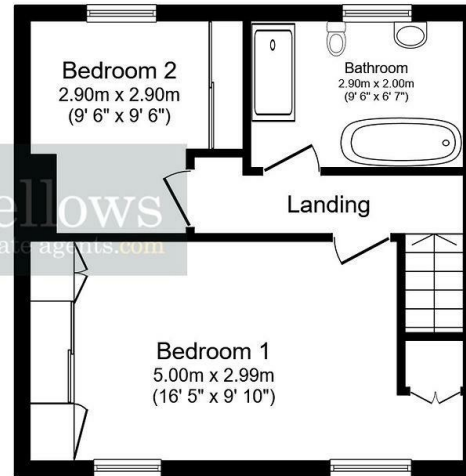






### Ground Floor

Floor area 47.2 sq.m. (508 sq.ft.)



### First Floor

Floor area 35.3 sq.m. (380 sq.ft.)

Total floor area: 82.5 sq.m. (888 sq.ft.)

This floor plan is for illustrative purposes only. It is not drawn to scale. Any measurements, floor areas (including any total floor area), openings and orientations are approximate. No details are guaranteed, they cannot be relied upon for any purpose and do not form any part of any agreement. No liability is taken for any error, omission or misstatement. A party must rely upon its own inspection(s).



EPC Rating: C  
Council Tax Band: A

Whilst every care has been taken to prepare these particulars, they are for guidance purposes only. All measurements are approximate and whilst every care has been taken to ensure their accuracy, they should not be relied upon and potential buyers/tenants are advised to recheck the measurements. The agent has not tested any equipment, services, fixtures or fittings and makes no representation regarding their condition.

#### CONTACT

246 Chilingham Road, Heaton,  
Newcastle upon Tyne, NE6 5LQ

E: [heaton@goodfellowsestateagents.com](mailto:heaton@goodfellowsestateagents.com)  
T: 0191 2654400

