





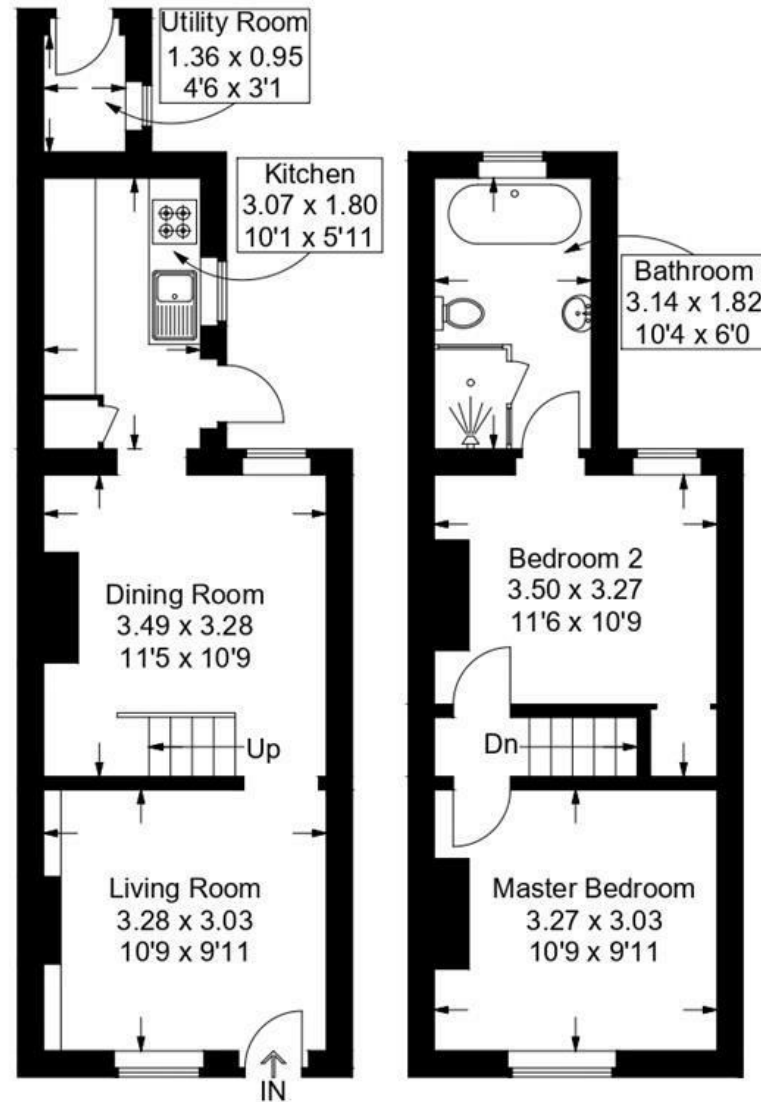
PRICE GUIDE £325k - £335k Nestled in the heart of Westbourne village, NEXA Properties is delighted to present this beautifully renovated two double-bedroom cottage, blending modern comforts with charming period features. Lovingly restored by its current owners, this home offers a perfect balance of character and contemporary living.

- TWO BEDROOM COTTAGE
- DESIRABLE WESTBOURNE LOCATION
- CLOSE TO LOCAL AMENITIES
- TWO DOUBLE BEDROOMS
- UPSTAIRS BATHROOM
- TWO RECEPTION ROOMS
- PRIVATE REAR GARDEN
- MODERN KITCHEN
- EPC RATING: E (40)



Beckenham Terrace, North Street, Westbourne

Approximate Gross Internal Area = 58.4 sq m / 629 sq ft



Ground Floor

First Floor

This plan is for layout guidance only. Not drawn to scale unless stated. Windows and door openings are approximate. Whilst every care is taken in the preparation of this plan, please check all dimensions, shapes and compass bearings before making any decisions reliant upon them.