



Guide Price
£325,000

Freehold

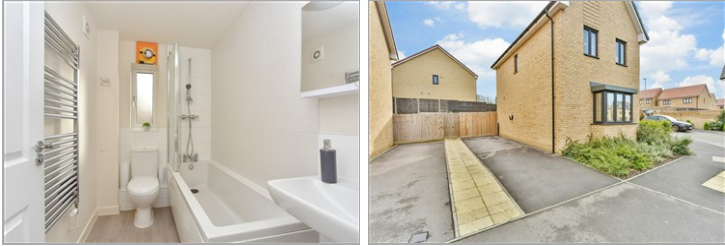
3x  2x  1x 

**Redshank View, Minster
on Sea, Kent, ME12**

OVER 60?

Secure this property
for up to **59% less!**

Wards
Helping you move forwards



Main features

- Low maintenance rear garden
- En-suite shower room to the main bedroom plus a family bathroom
- Perfect for a first time buyer with no work to do
- Allocated parking for 2 cars
- Brand new development only 3 years old

Accommodation

GROUND FLOOR

- Entrance Hall
- Downstairs Cloakroom: 5'4 x 3'3 (1.63m x 0.99m)
- Lounge: 15'10 x 11'5 (4.83m x 3.48m)
- Kitchen: 15'4 x 10'8 (4.68m x 3.25m)

FIRST FLOOR

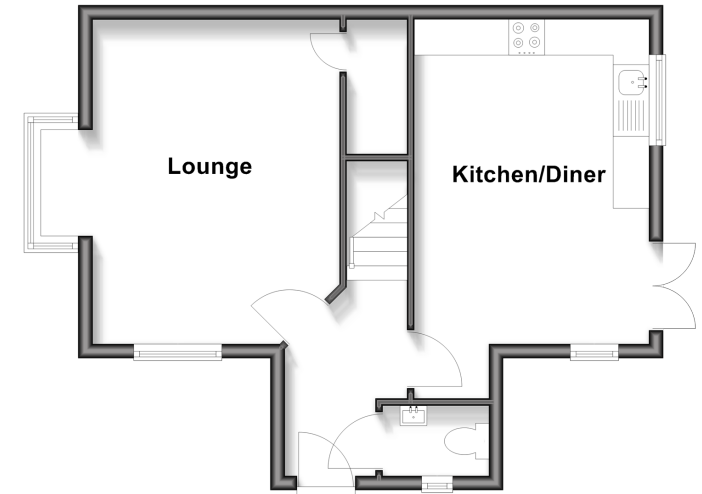
- Landing
- Bedroom 1: 11'5 x 11'0 (3.48m x 3.36m)
- En-suite Shower Room: 8'10 x 4'8 (2.69m x 1.42m)
- Bedroom 2: 10'8 x 10'4 (3.25m x 3.15m)
- Bedroom 3: 8'7 x 6'4 (2.62m x 1.93m)
- Bathroom: 7'8 x 5'2 (2.34m x 1.58m)

OUTSIDE

- Front Garden
- Allocated Parking
- Rear Garden

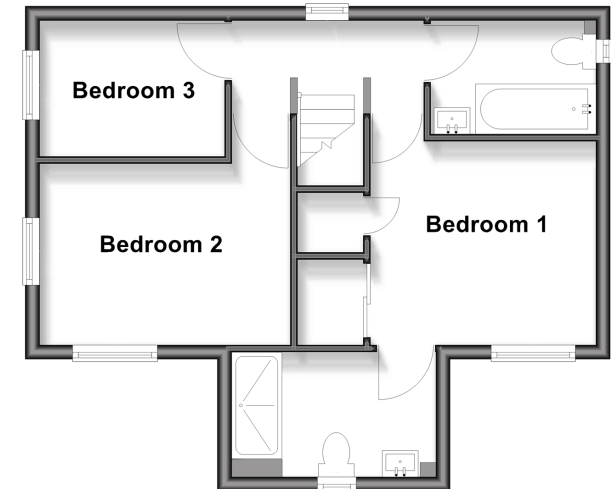
Ground Floor

Approx. 41.0 sq. metres (441.0 sq. feet)



First Floor

Approx. 40.4 sq. metres (435.2 sq. feet)



Call Sheerness - 01795 664651 ■ wardsof Kent.co.uk

- Legal advice should be taken to verify fixtures/fittings, planning, alterations and/or lease details
- Appliances & services are untested, dimensions are approximate and floor plans are not to scale
- Through a Homewise Home For Life Plan people aged 60+ can secure this property for up to 50% less, by purchasing a Lifetime Lease



11635830/20251201/DS/JLS