



## 6 Plover Drive

Biddulph, ST8 7UJ

**Price £415,000**



Executive Detached Home – Immaculate Finish Throughout

Here at Carters we are proud to offer this stunning executive detached residence, presented to an exceptionally high standard with a focus on quality and attention to detail.

The property features a spacious entrance hallway with a cloakroom, leading to a luxurious Howdens-fitted kitchen and dining area with butcher block work surfaces, fully integrated appliances, a Belfast sink, and central island – ideal for family living and entertaining.

To the rear, a bright conservatory with bifold doors opens onto a south-facing garden with an Indian stone patio, lawn, and raised flower borders. The living room at the front offers a box bay window and a stove fire with marble hearth, creating a cosy yet elegant space.

The ground floor is completed by a utility room and wc, while upstairs there are four generous bedrooms, including a master with ensuite, and a luxurious three-piece family bathroom with freestanding bath.

Externally, the property benefits from a recently installed resin driveway, providing parking for up to five vehicles.

Viewing is highly recommended to truly appreciate the space, location, and the outstanding quality of finish this home provides. Don't miss this opportunity to make this exceptional property your forever home.

# 6 Plover Drive

Biddulph, ST8 7UJ

Price £415,000



## Entrance Hallway

Composite double glazed entrance door to the front elevation.

Coving to the ceiling. Stairs to the first floor. Built in cloakroom. Radiator. Vinyl flooring.

## Living Room

14'6" x 12'8" (4.42m x 3.86m)

UPVC double glazed box bay window to the front elevation.

Coving to the ceiling. Gas stove fire with a marble hearth. Panel radiator. Karndean flooring in a parquet finish.

## Kitchen / Dining Room

30'11" x 10'9" (9.42m x 3.28m)

Two UPVC double glazed windows to the front elevation. UPVC double glazed French doors to the rear elevation.

High quality Howdens fitted kitchen having a range of wall, base and drawer units, a spacious larder cupboard and a separate island. Solid wood butcher block work surfaces. Belfast ceramic sink with a mixer tap. Rangemaster oven with two ovens, a grill and a five ring hob with a built in extractor over. Built in microwave. Integrated dishwasher. Freestanding American style fridge freezer. Recessed ceiling down lighters. Feature pendant lighting. Karndean flooring in a parquet finish.

## Utility Room

9' x 5'11" (2.74m x 1.80m)

Composite double glazed window to the side elevation. Composite double glazed window to the side elevation. Internal door leading to the garage.

Howdens fitted wall and base units with solid wood butcher block work surfaces. Inset stainless steel sink with a mixer tap. Space and plumbing for a washing machine. Space for a

tumble dryer. Feature wall paneling. Extractor fan. Recessed ceiling down lighters. Vinyl flooring.

## W.C

Vanity basin unit with storage under and a tiled splashback. Mid level w.c. Extractor fan. Chrome heated towel rail. Vinyl flooring.

## Conservatory

14'2" x 9'6" (4.32m x 2.90m)

Double glazed bi fold doors to the side elevation leading to the South facing rear garden. UPVC double glazed windows to the rear and side elevations.

Radiator. Tiled flooring.

## Stairs and Landing

Access to the loft which is partially boarded and has a ladder and lighting.

## Bedroom One

12'3" x 12' (3.73m x 3.66m)

UPVC double glazed window to the rear elevation.

Sharps fitted wardrobes. Radiator.

## En Suite

7'6" x 3'11" (2.29m x 1.19m)

UPVC double glazed window to the side elevation.

Modern three piece suite comprising of; a shower enclosure with an electric shower, pedestal wash hand basin and a mid level w.c. Partially tiled walls. Extractor fan. Chrome heated towel rail. Tiled flooring.

## Bedroom Two

8'7" x 19'9" (2.62m x 6.02m)

UPVC double glazed windows to the front and rear elevations.

Two radiators.

## Bedroom Three

10'9" x 7'9" (3.28m x 2.36m)

UPVC double glazed window to the front elevation.

Radiator.

## Bedroom Four

8'6" x 7'4" (2.59m x 2.24m)

UPVC double glazed window to the rear elevation.

Radiator.

## Bathroom

11'6" x 6'2" (3.51m x 1.88m)

UPVC double glazed window to the front elevation.

Luxurious three piece bathroom suite comprising of; a freestanding bath with a hand held shower attachment, a pedestal wash hand basin and a mid level w.c. Recessed ceiling down lighters. Partially tiled walls. Chrome heated towel rail. Built in storage cupboard. Tiled flooring.

## Garage

6'9" x 9' (2.06m x 2.74m)

Up and over garage door to the front elevation.

Plumbing for a washing machine. Power and lighting.

## Externally

To the front, the property benefits from a recently laid resin driveway, providing off-road parking for up to five vehicles. A gated side access leads seamlessly to the rear garden.

The rear garden has been professionally landscaped and features an Indian stone patio, perfect for outdoor entertaining. A generous lawn is bordered by raised railway sleeper flower beds, planted with a selection of seasonal shrubs and plants. Additional features

include a secure garden shed and an outside tap, combining both practicality and style.

## Additional Information

Freehold. Council Tax Band E.

Total Floor Area: 1367 SQUARE FOOT / 127 SQUARE METERS.

## Disclaimer

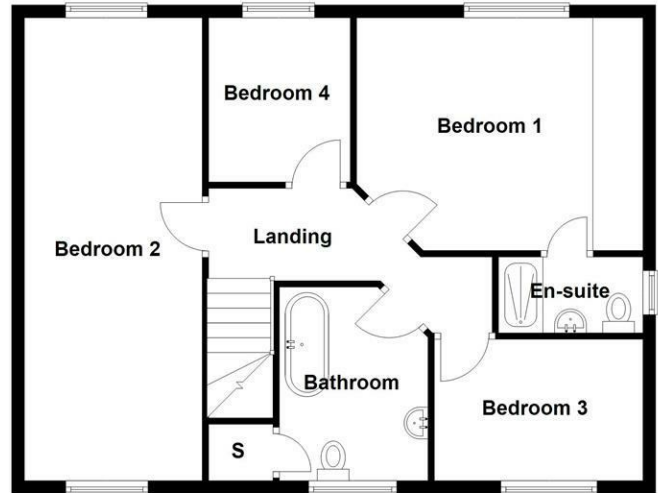
Although we try to ensure accuracy, these details are set out for guidance purposes only and do not form part of a contract or offer. Please note that some photographs have been taken with a wide-angle lens. A final inspection prior to exchange of contracts is recommended. No person in the employment of Carters Estate Agents Ltd has any authority to make any representation or warranty in relation to this property. We obtain some of the property information from land registry as part of our instruction and as we are not legal advisers we can only pass on the information and not comment or advise on any legal aspect of the property. You should take advice from a suitably authorised licensed conveyancer or solicitor in this respect.

Tel: 01782 470391

Ground Floor



First Floor



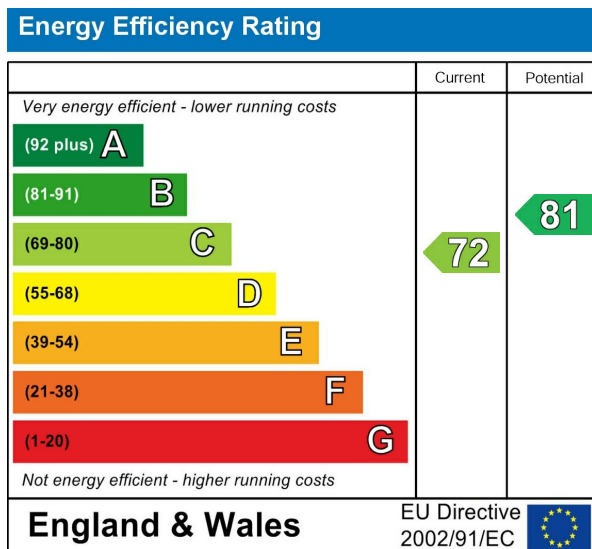
## Road Map



## Hybrid Map



## Energy Efficiency Graph



## Viewing

Please contact our Carters Estate Agents Office on 01782 470391 if you wish to arrange a viewing appointment for this property or require further information.

These particulars, whilst believed to be accurate are set out as a general outline only for guidance and do not constitute any part of an offer or contract. Intending purchasers should not rely on them as statements of representation of fact, but must satisfy themselves by inspection or otherwise as to their accuracy. No person in this firm's employment has the authority to make or give any representation or warranty in respect of the property.

**101 High Street Biddulph Stoke on Trent Staffs ST8 6AB**  
**01782 470391**  
**www.carters-estateagents.co.uk**