



## Craven Park, NW10

£1,700 Per calendar month

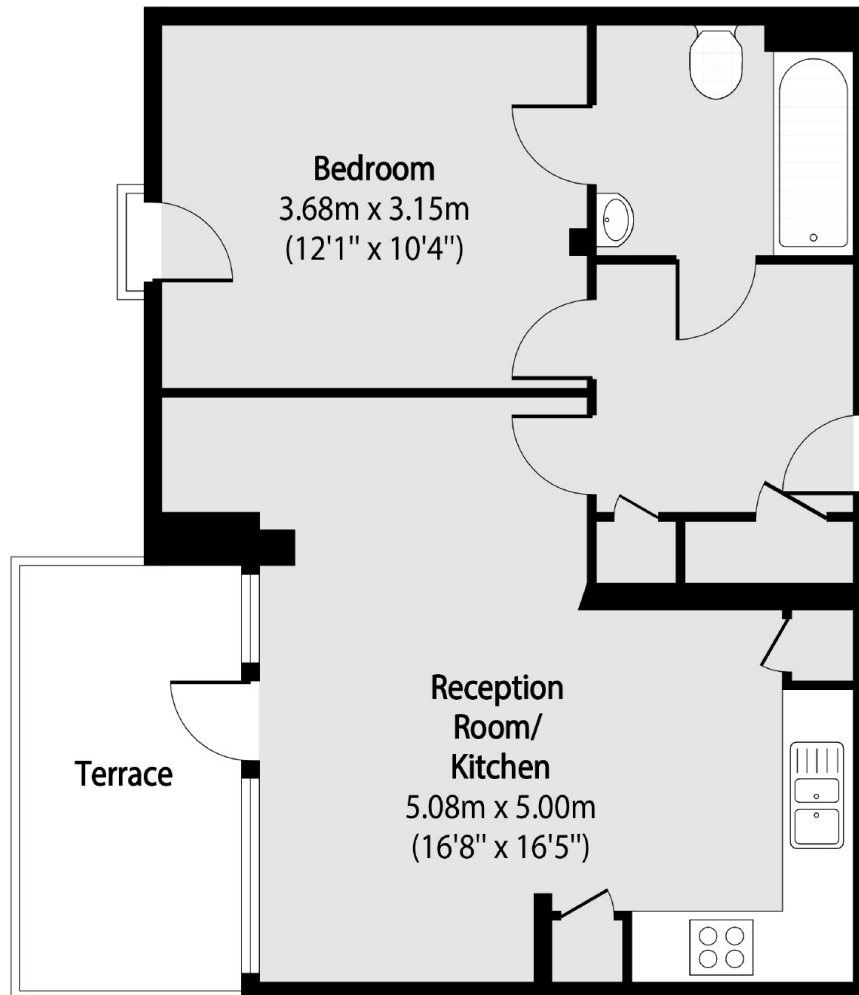
A spacious one-bedroom property, perfect for a couple or a single professional. The flat has wood flooring throughout, an open plan living/ kitchen, and a private balcony.

Craven Park Road provides access to an array of shops, cafe's and restaurants, with transport links including Harlesden (Bakerloo & Overground) and many bus routes.

### Features

- One Bedroom
- Private Balcony
- Wooden Floors
- Secure Entrance
- Communal Roof Terrace
- Close To Transport Links

# Craven Park, London, NW10



Total area (approx): 45.34 sq m (488 sq. ft)

Terrace total area (approx): 6.97 sq m (75 sq. ft)