

Saxondale Road, Wigston

£240,000 Freehold

Available with no upward chain, this 3-bedroom home in Wigston offers a driveway, integral garage, modern shower room, and a generous rear garden, making it ideal for first-time buyers or families.

Council Tax band: B

Tenure: Freehold

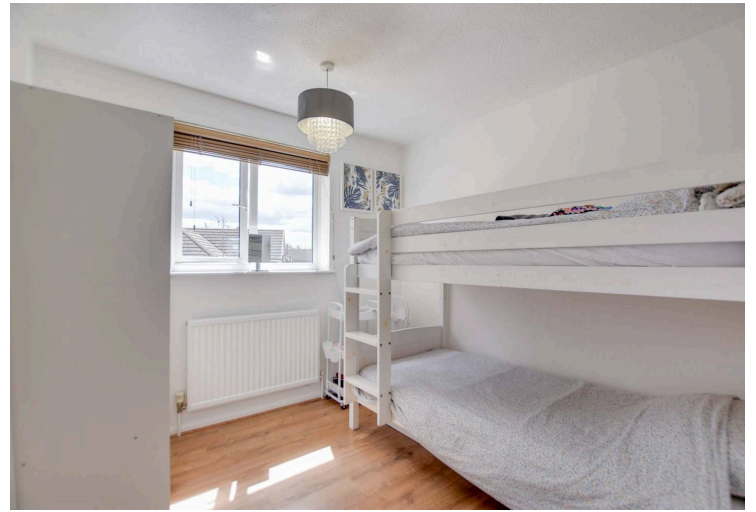
EPC Energy Efficiency Rating: C

EPC Environmental Impact Rating: C



0116 288 4888





Entrance Lobby

Internal door to the living room.

Living Room

14' 5" x 11' 2" (4.40m x 3.40m)

Double-glazed window to front elevation, stairs to first floor, TV point, wooden flooring, and radiator

Dining Room

7' 3" x 6' 7" (2.22m x 2.00m)

Double-glazed French doors to the rear garden, lino flooring, radiator, and archway through to the kitchen

Kitchen

8' 6" x 6' 3" (2.60m x 1.90m)

Double-glazed window to rear elevation, sink and drainer unit, range of wall and base units with work surfaces over, gas cooker point, plumbing for washing machine, wall-mounted boiler, space for fridge freezer, and lino flooring.



First Floor Landing

Loft access and radiator.

Bedroom One

12' 10" x 10' 10" (3.90m x 3.30m)

Double-glazed window to the rear elevation and radiator.

Bedroom Two

11' 5" x 8' 6" (3.47m x 2.59m)

Double-glazed window to the front elevation and radiator

Bedroom Three

8' 10" x 8' 6" (2.68m x 2.60m)

Double-glazed window to the front elevation and radiator.

Shower Room

Double-glazed window located on the rear elevation, tiled flooring, A walk-in tiled shower cubicle equipped with both an overhead rainfall shower and a handheld attachment, a low-level WC, a wash hand basin and a heated chrome towel rail.

Front Garden

Driveway leading to garage with paved and cobbled front garden and hedging to the side

Rear Garden

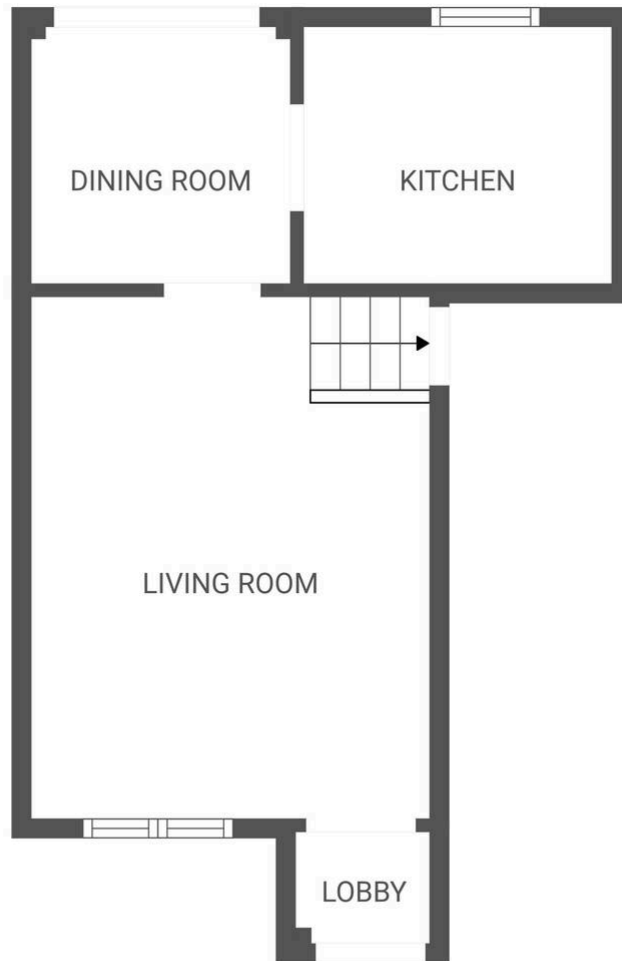
Paved patio leading to a mainly lawned rear garden with fencing to the perimeter, rear door to garage, outside power point, lighting, and a tap

Driveway

Capacity for one car

Garage

5.8m x 2.4m. Up and over door to front elevation, rear door to garden, power, and lighting



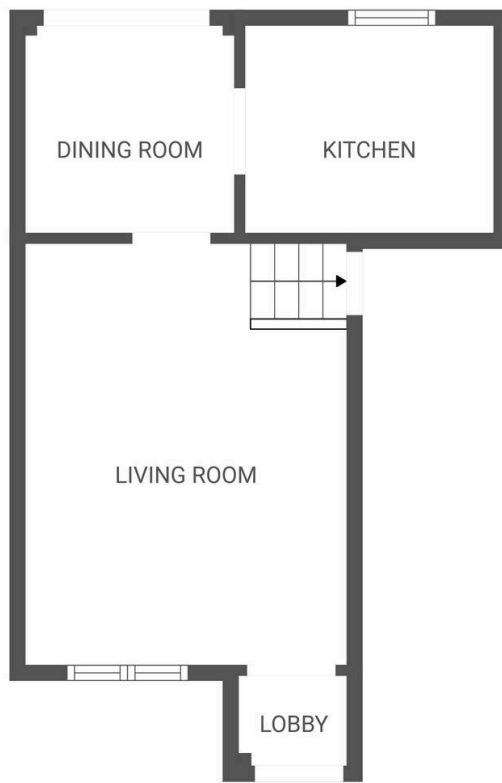
FLOOR PLAN CREATED BY CUBICASA APP. MEASUREMENTS DEEMED HIGHLY RELIABLE BUT NOT GUARANTEED.

You can include any text here. The text can be modified upon generating your brochure.

We'll keep you moving...



We must inform all prospective purchasers that the measurements are taken by an electronic tape and are provided as a guide only and they should not be used as accurate measurements. We have not tested any mains services, gas or electric appliances, or fixtures and fittings mentioned in these details, therefore, prospective purchasers should satisfy themselves before committing to purchase. Intending purchasers must satisfy themselves by inspection or otherwise to the correctness of the statements contained in these particulars. Knightsbridge Estate Agents & valuers (nor any person in their employment) has any authority to make any representation or warranty in relation to the property. The floor plans are not to scale, and are intended for use as a guide to the layout of the property only. They should not be used for any other purpose. Similarly, the plans are not designed to represent the actual décor found at the property in respect of flooring, wall coverings or fixtures and fittings.



FLOOR PLAN CREATED BY CUBICASA APP. MEASUREMENTS DEEMED HIGHLY RELIABLE BUT NOT GUARANTEED.



FLOOR PLAN CREATED BY CUBICASA APP. MEASUREMENTS DEEMED HIGHLY RELIABLE BUT NOT GUARANTEED.

You can ~~well delete text here.~~ The text can be modified upon generating your brochure.



We must inform all prospective purchasers that the measurements are taken by an electronic take and are provided as a guide only and they should not be used as accurate measurements. We have not tested any mains services, gas or electric appliances, or fixtures and fittings mentioned in these details, therefore, prospective purchasers should satisfy themselves before committing to purchase. Intending purchasers must satisfy themselves by inspection or otherwise to the correctness of the statements contained in these particulars. Knightsbridge Estate Agents (nor any person in their employment) has any authority to make any representation or warranty in relation to the property. The floor plans are not to scale, and are intended for use as a guide to the layout of the property only. They should not be used for any other purpose. We are required by law to conduct anti-money laundering checks on all those selling or buying a property. Whilst we retain responsibility for ensuring checks and any ongoing monitoring are carried out correctly, the initial checks are carried out on our behalf by Lifetime Legal who will contact you once you have agreed to instruct us in your sale or had an offer accepted on a property you wish to buy. The cost of these checks is £60 (incl. VAT), which covers the cost of obtaining relevant data and any manual checks and monitoring which might be required. This fee will need to be paid by you in advance of us publishing your property (in the case of a vendor) or issuing a memorandum of sale (in the case of a buyer), directly to Lifetime Legal, and is non-refundable. We will receive some of the fee taken by Lifetime Legal to compensate for its role in the provision of these checks.