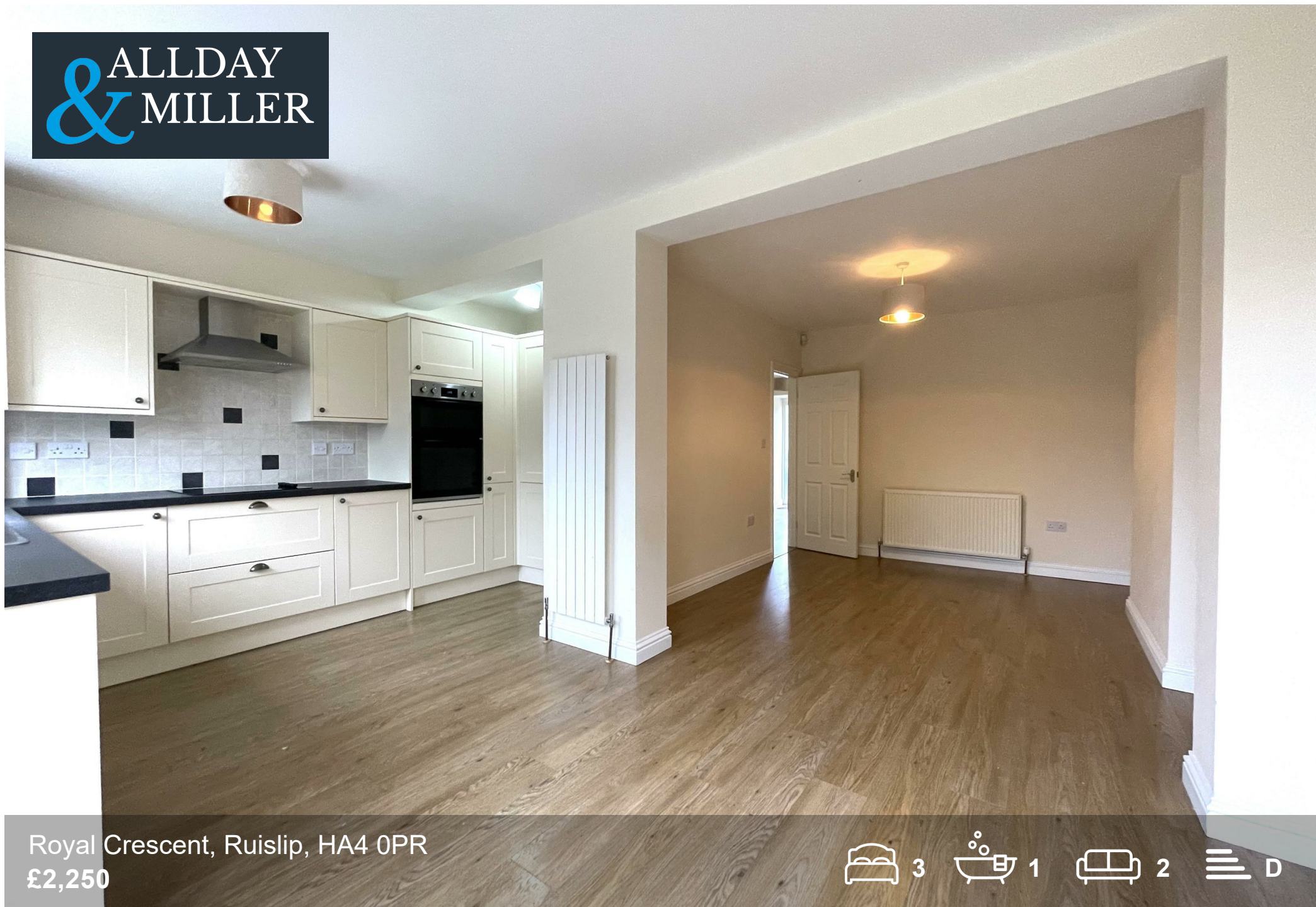


ALLDAY
& MILLER



Royal Crescent, Ruislip, HA4 0PR
£2,250

3 1 2 D



Royal Crescent, Ruislip, HA4 0PR

£2,250

- End Of Terrace Family Home
- Downstairs WC/ Utility Room
- Separate Bay Fronted Reception Room
- 15 Minute Walk From South Ruislip Station
- Three Bedrooms
- Spacious Kitchen Diner
- Ample Off Street Parking
- Available Immediately

Description

The ground floor features a bay-fronted reception room, a large kitchen diner perfect for family living, plus a downstairs WC/ utility room. Upstairs are three good-sized bedrooms and a family bathroom. Outside there's a private rear garden and ample driveway parking. Ideally located in South Ruislip, the home is approximately a 15-minute walk to South Ruislip station and high street amenities, with local shops, schools and green spaces close by, plus excellent road links into London and beyond.

Situation

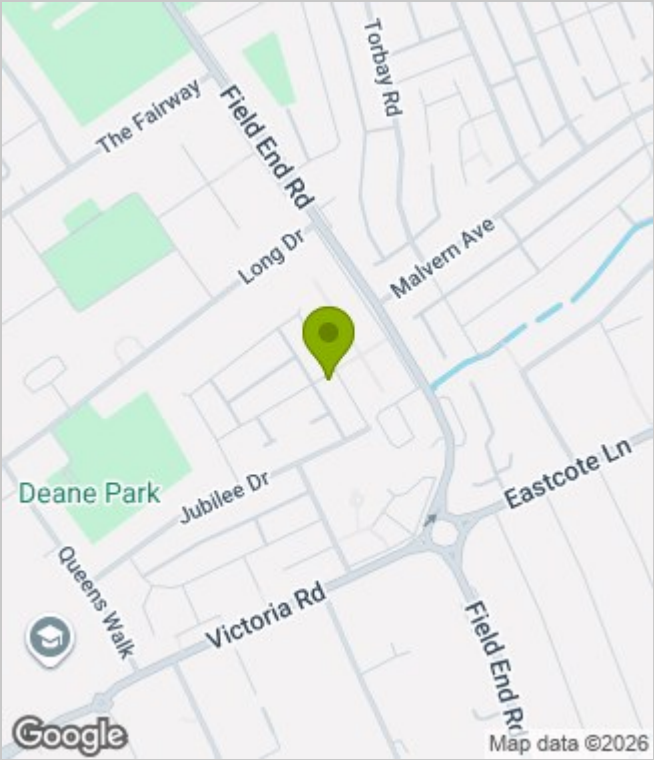
Royal Crescent lies within the popular South Ruislip area of North West London, offering a well-connected, family-friendly neighbourhood. South Ruislip station (Central line) is within walking distance, providing quick access into central London, while local buses add further transport options. Good road links include the A40/M40 corridor and easy access towards the M25, Heathrow and beyond. The area benefits from a range of well-regarded schools nearby, including Deanesfield Primary, Field End Infant and St Swithun Wells, with secondary options such as Queensmead and Ruislip High School also close by. Local shops, parks and green spaces enhance everyday living.



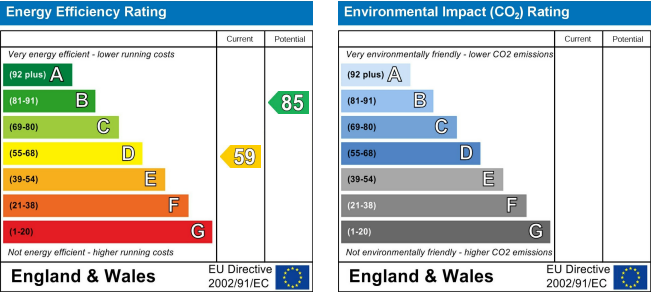
Floor Plans



Area Map



Energy Performance Graph



These particulars, whilst believed to be accurate are set out as a general outline only for guidance and do not constitute any part of an offer or contract. Intending purchasers should not rely on them as statements of representation of fact, but must satisfy themselves by inspection or otherwise as to their accuracy. No person in this firms employment has the authority to make or give any representation or warranty in respect of the property.