



smarthomes

Tanworth Lane

Cheswick Green, Solihull

- A Five Bedroom Detached Dormer Bungalow Requiring Modernisation
- Good Sized Fitted Kitchen
- Spacious Double Aspect Lounge Diner
- Utility
- Large Easterly Facing Rear Garden
- No Upward Chain

£525,000

Current EPC Rating - D

Current Council Tax Band - F





Property Description

A five bedroom detached dormer bungalow situated on a substantial plot requiring modernisation and offered for sale with no upward chain. The versatile split level accommodation briefly affords; five bedrooms across two floors, spacious double aspect lounge diner, good sized kitchen, utility, family bathroom, extensive driveway and large easterly facing rear garden

The village of Cheswick Green is situated on the edge of Shirley and open countryside, with easy road access to the M42 motorway, NEC, Birmingham International Airport and Railway Station. There are local shops situated in Cheswick Green and a wide selection of shopping facilities can be found along the A34 Stratford Road in Shirley, on the Retail Park on Marshall Lake Road and Solihull Town Centre offers an excellent choice of shops including Touchwood Shopping Centre and John Lewis Department Store. The property currently falls within Alderbrook senior school catchment.



Rooms & Measurements

Entrance Hall

Dual Aspect Through Lounge Diner :

Lounge Area - 4.78m x 3.78m (15'8" x 12'5")

Dining Area - 2.62m x 4.62m (8'7" x 15'2")

Fitted Kitchen to Rear - 3.61m x 3.28m (11'10" x 10'9")

Pantry to Front

Large Utility - 3.33m x 1.96m (10'11" x 6'5" (min) widening to 9'4")

Bedroom Four to Side - 3.48m x 3.33m (11'5" x 10'11")

Bedroom Two to Front - 3.48m x 3.94m (11'5" x 12'11")

Master Bedroom to Front - 6.76m x 3.43m (22'2" x 11'3")

Bedroom Five to Front - 2.46m x 3.15m (8'1" x 10'4" (to wardrobes)

Bedroom Three to Front - 4.65m x 2.29m (15'3" x 7'6")

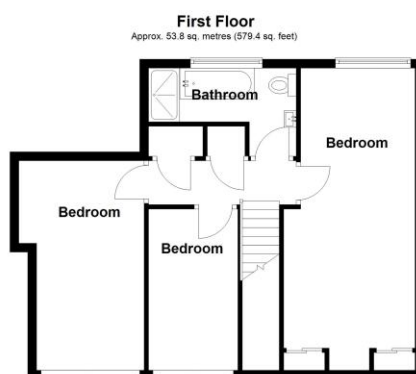
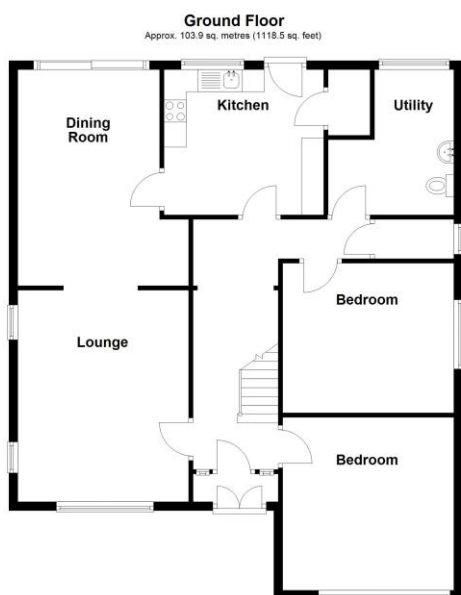
Family Bathroom - 1.65m x 3.51m (5'5" x 11'6")

Tenure

We are advised by the vendor that the property is freehold. We would advise all interested parties to obtain verification through their own solicitor or legal representative

EPC supplied by Nigel Hodges

Current council tax band – F



Total area: approx. 157.7 sq. metres (1697.9 sq. feet)

316 Stratford Road
Shirley
Solihull
B90 3DN

www.smart-homes.co.uk
0121 744 4144

Agents Note: Whilst every care has been taken to prepare these particulars, they are for guidance purposes only. We believe all information to be correct from the day of marketing however, we advise and recommend that your conveyancer and or surveyor verifies all information supplied. All measurements are approximate are for general guidance purposes only and whilst every care has been taken to ensure their accuracy, they should not be relied upon and potential buyers are advised to recheck the measurements.