



Market Mews, W1J

£750 Per week

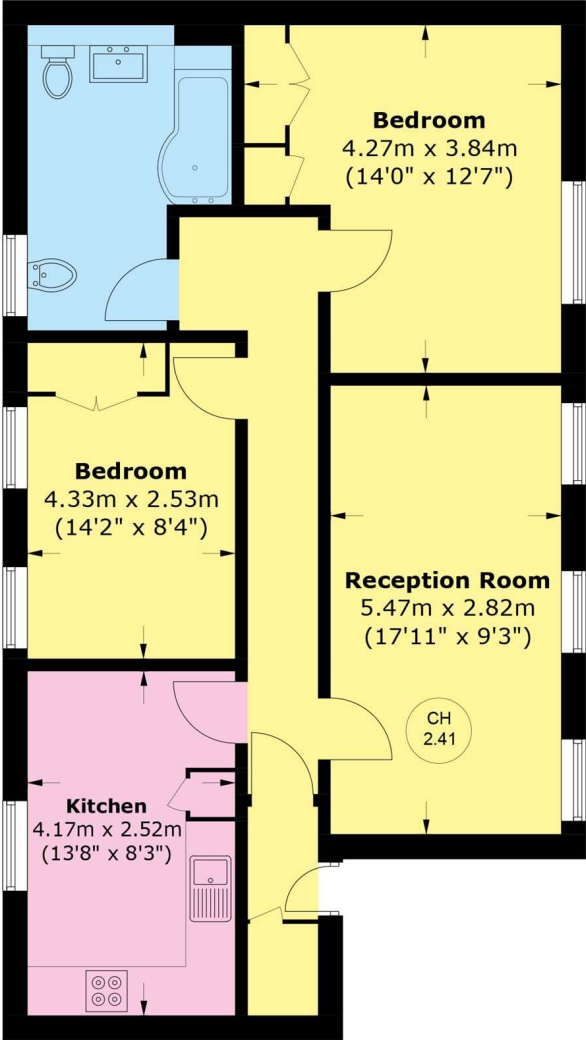
A two bedroom second floor apartment located on a mews in the heart of Mayfair. The apartment has a reception/dining room, separate kitchen, two double bedrooms and a family bathroom.

Located on Market Mews in Shepherd Market close to the open spaces of Green Park and Hyde Park.

Features

- Two Bedrooms
- One Bathroom
- Separate Kitchen
- Fully Fitted Kitchen
- Quiet Mews
- Excellent Location

Market Mews,
London, W1J



Second Floor

Total area (approx.): 72.0 sq. m (775.0 sq. ft)



Wetherell
102 Mount Street
London
W1K 2TH
Lettings
020 7529 5588

Energy Rating: D. We aim to make our particulars both accurate and reliable. However they are not guaranteed; nor do they form part of an offer or contract. If you require clarification on any points then please contact us, especially if you're traveling some distance to view. Please note that appliances and heating systems have not been tested and therefore no warranties can be given as to their good working order.



dexters.co.uk