

FLETCHERS

ESTATE AGENTS



Elliott Road, W4

£8,500 Per week (pcm)

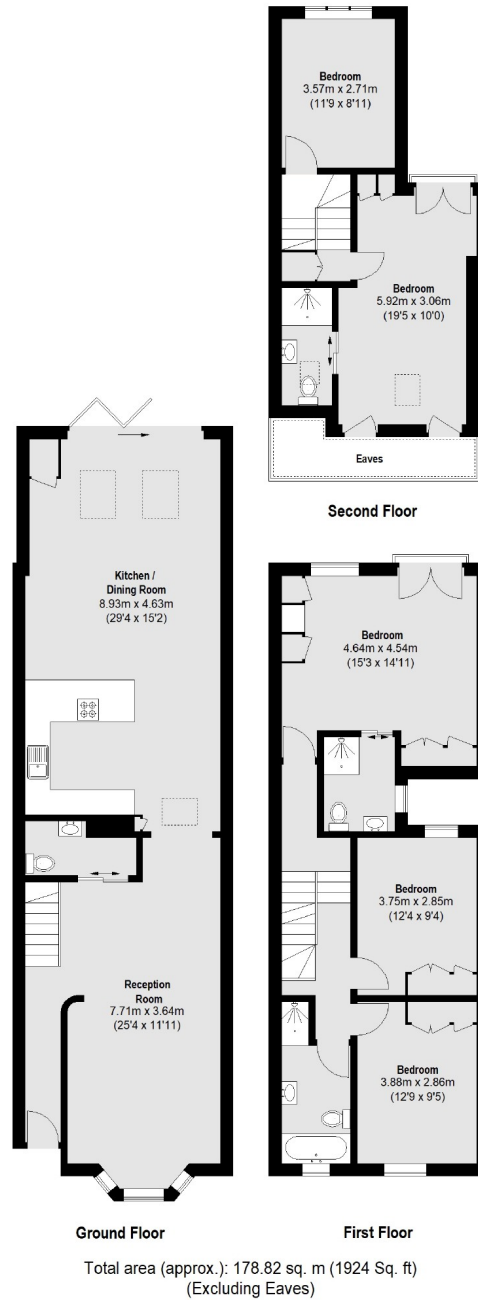
This immaculately presented five bedroom family home includes a through reception room, downstairs WC, a large modern kitchen with doors leading out onto a patio garden. The property has been finished to the highest standard throughout, with no expense spared.

Elliott Road runs parallel to Turnham Green Terrace and joins on to Chiswick High Road, allowing easy access to Turnham Green Underground Station and the many shops and restaurants on the High Road.

- Five Bedrooms • Three Bathroom • Landscaped Garden • Modern Interior • Period Features • Central Chiswick •

FLETCHERS

ESTATE AGENTS



Fletchers Chiswick High Road Lettings
86 Chiswick High Road, Chiswick, London, W4 1SY
020 8742 4100
chiswicklettings@fletcherstates.com

Energy Rating: C. We aim to make our particulars both accurate and reliable. However they are not guaranteed; nor do they form part of an offer or contract. If you require clarification on any points then please contact us, especially if you're traveling some distance to view. Please note that appliances and heating systems have not been tested and therefore no warranties can be given as to their good working order.