

FLETCHERS

ESTATE AGENTS



Sedgeford Road, W12

£475,000

A spacious two bedroom conversion flat within a striking stucco Victorian period property. The flat holds its own private front door opening into a large hallway with a spacious separate reception room with high ceilings, attractive coving and a large original window allowing plenty of light. The property benefits from two large double bedrooms with plenty of space to build additional storage along with a separate kitchen with access to the private, rear garden.

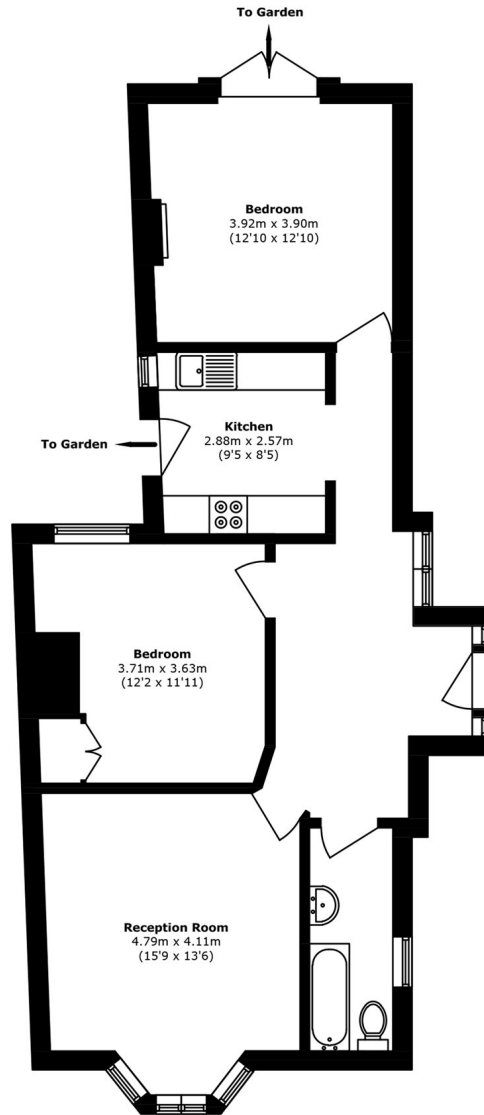
This excellent flat is a superb choice for first time buyers and investors alike and has huge potential in making this your own and is offered to the market as a share of freehold and no onward chain.

Sedgeford road, is a quiet tree lined street, moments from the popular Askew Road which is known locally for its array of independent shops, bars and restaurants. The property is under a short distance from the popular Westfield Shopping Centre and an array of independent shops, restaurants and bars are on your doorstep on Goldhawk Road. Shepherds Bush Market (Circle and Hammersmith and City Lines) and Shepherds Bush Underground (Central Line) and Overground are under a mile away offering excellent connections in and out of the city.

- Two Double Bedrooms • Separate Kitchen • Private Garden • Share of Freehold • Lots of Natural Light • Quite Residential

FLETCHERS

ESTATE AGENTS



Total area (approx.): 75.4 sq. m (811.6 sq. ft)

Fletchers Brook Green Sales
144 Shepherds Bush Road, Hammersmith, London, W6 7PB
020 7603 1415
brookgreensales@fletcherestates.com

Energy Rating: D. We aim to make our particulars both accurate and reliable. However they are not guaranteed; nor do they form part of an offer or contract. If you require clarification on any points then please contact us, especially if you're traveling some distance to view. Please note that appliances and heating systems have not been tested and therefore no warranties can be given as to their good working order.