



Sheen Road, TW9

£625,000

This three-bedroom, first floor apartment offering a rare full-length wrap around west-facing balcony is located within the iconic Art Deco Grade II Listed Lichfield Court designed by George Bartram Carter and offered to the market with no onward chain.

Lichfield Court is ideal for all that Richmond has to offer being only a few minutes walk to Richmond Park, the River Thames, and Richmond Station (District line, London Overground Service and South Western train services). Additionally, Lichfield Court has its own direct access to The Quadrant.

Features

- Three Bedrooms
- Large Balcony
- 24hr Concierge Service
- Secure Off-Street Parking
- Share of Freehold
- No Onward Chain



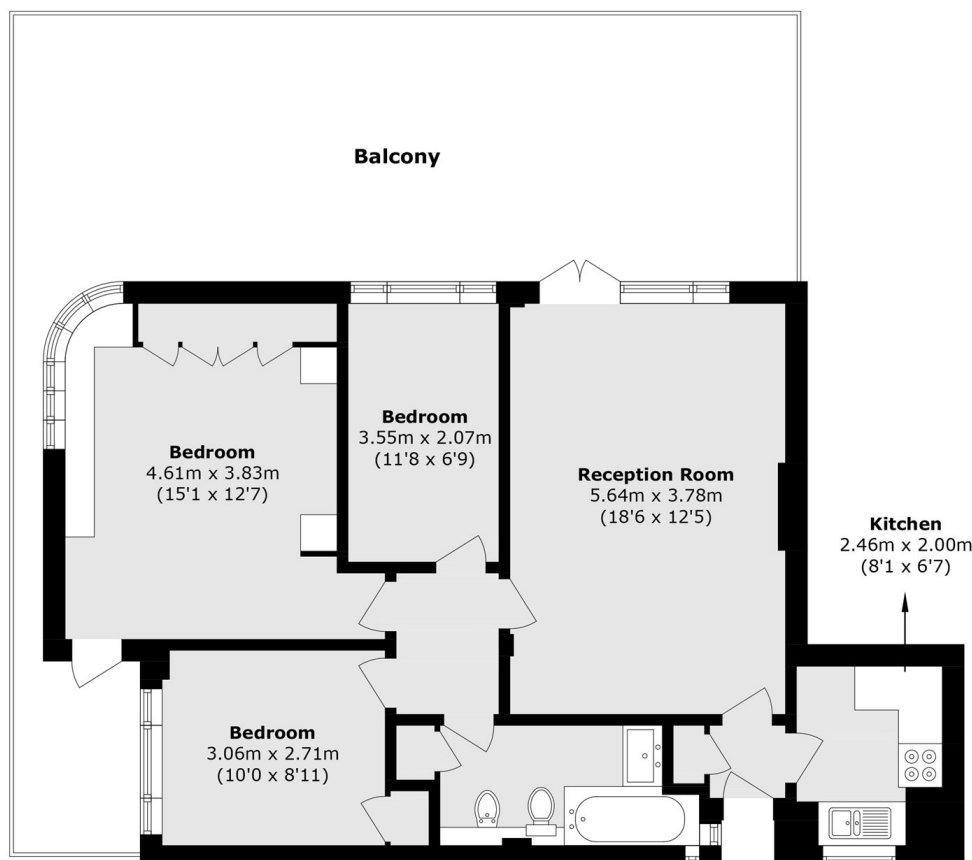
Sheen Road, TW9

The accommodation consists of an entrance hall with storage cupboard, a spacious reception room with glass double doors leading onto the large private balcony, a fitted kitchen, a master double bedroom with built in wardrobes and two additional double bedroom with built in wardrobe, storage cupboards in the inner hallway, and a family bathroom.

Lichfield Court encompasses well maintained gardens and landscaped seating areas for exclusive use by residents, as well as gated unallocated off-street parking - including several discount rate EV charging points. A separate private gated walkway provides residents fast pedestrian access to both Richmond Station and 'The Quadrant'.



Sheen Road, Richmond, TW9



Total area (approx.): 74.0 sq. m (796.5 sq. ft)
Balcony area (approx.): 45.4 sq. m (488.6 sq. ft)