

Ashtons



4 Exelby Court YO26 5TG

£1,300 Per Month

3



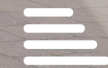
1



1



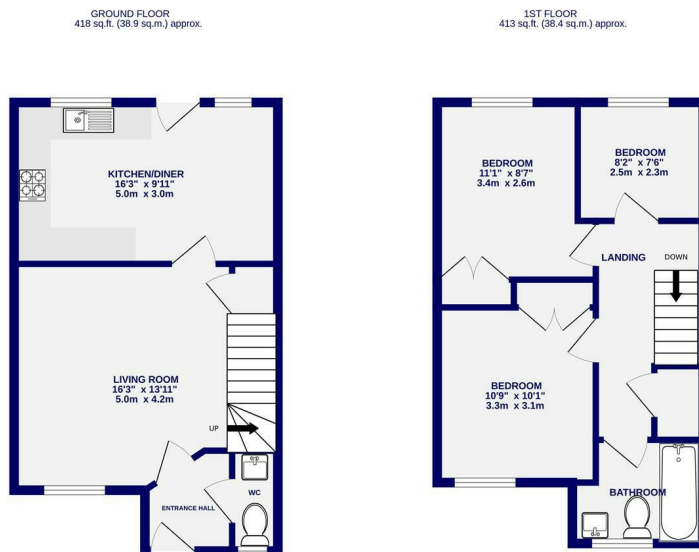
C



A very well presented three bedroom semi detached house offered on a unfurnished basis. Situated just off Beckfield Lane close to local shops and easy access to the A1237, A59 and just a short journey in to York city centre. The property comprises entrance hall, WC. Living room. Breakfast kitchen with access out to a good sized lawned garden with shed. The modern kitchen includes oven/hob, fridge/freezer and washer dryer and slimline dishwasher. To the first floor are two double bedrooms both with built in wardrobes, one single bedroom and house bathroom. Allocated parking for 2 cars.

Available now

Council Tax Band C / EPC Rating C / Deposit £1400pcm



TOTAL FLOOR AREA: 832 sq.ft. (77.3 sq.m.) approx.
 Whilst every attempt has been made to ensure the accuracy of the floorplan, measurements of rooms and any other items are approximate. It is included in the plan for guidance only and does not constitute a contract. The plan is for illustrative purposes only and should be used as such by any prospective purchaser. The services, systems and appliances shown have not been tested and no guarantee as to their operation.
 Made with Metropix (2020)



Ashtons Lettings

01904 731404

lettings@ashtonsnet.com