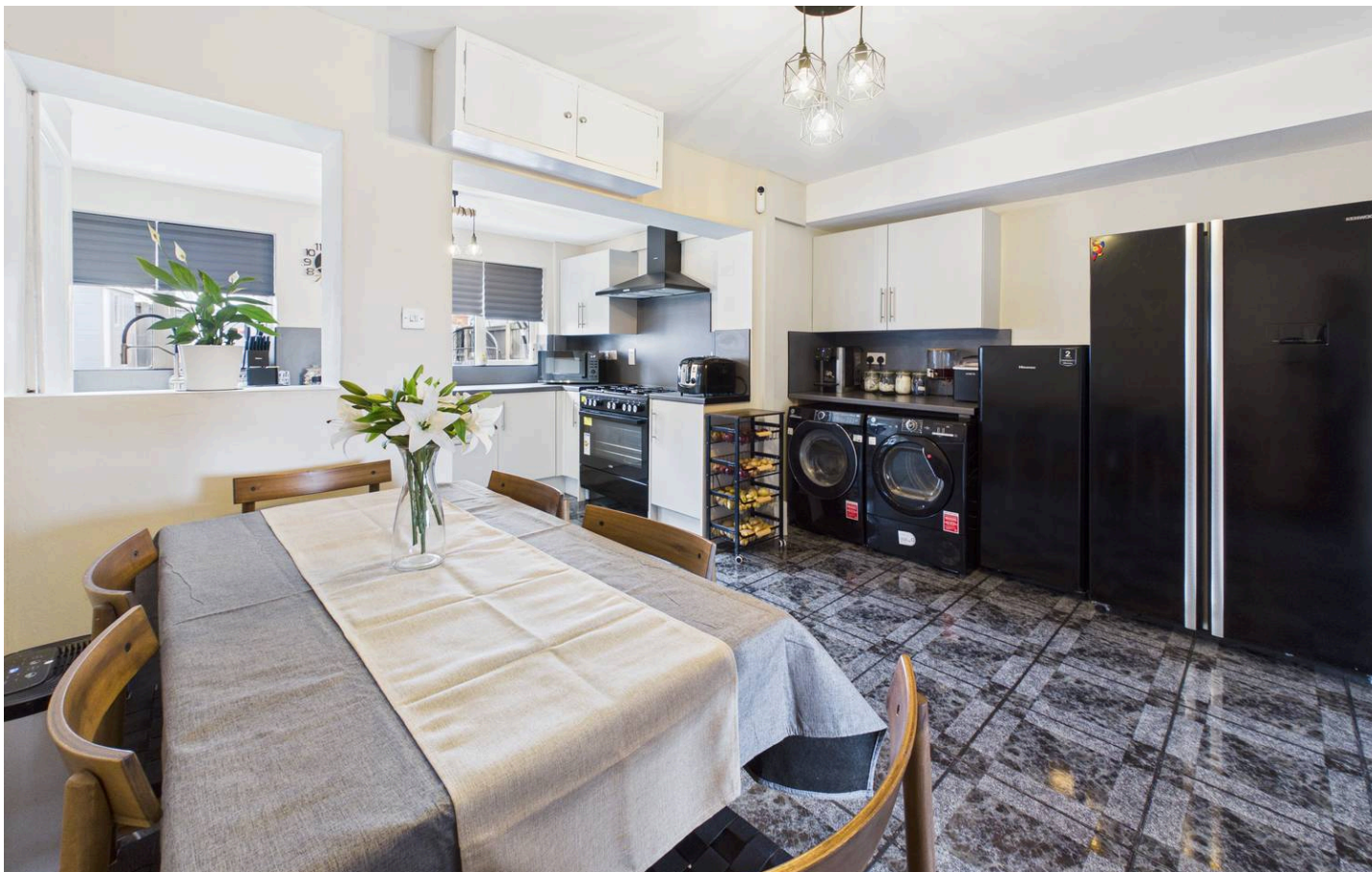




4 Strawberry Bank, Huthwaite, NG17 2QG

Guide Price £180,000



4 Strawberry Bank

Huthwaite, Sutton-In-Ashfield

Council Tax band: A

Tenure: Freehold

EPC Energy Efficiency Rating: C

- Well presented and extended semi-detached house which has undergone a scheme of refurbishment
- Three bedrooms
- Entrance porch and hallway
- Lounge with large window overlooking the front elevation with views to the distance
- Dining room with tiled flooring open plan to the kitchen
- Kitchen with white units and ample worktop space for food preparation
- Rear porch and adjoining ground floor Wc with built-in washbasin to the cistern
- First floor bathroom/Wc with white suite, sleek grey subway tiling and shower fed by mixer taps
- Combination gas central heating, UPVC double glazing
- Double width driveway provides off road parking
- Low maintenance rear garden with artificial lawn







Floor 0



Floor 1



Approximate total area⁽¹⁾
72.7 m²
782 ft²

Reduced headroom
0.6 m²
7 ft²

(1) Excluding balconies and terraces

Reduced headroom
----- Below 1.5 m/5 ft

Calculations reference the RICS IPMS 3C standard. Measurements are approximate and not to scale. This floor plan is intended for illustration only.

GIRAFFE360



David James Estate Agents

43 Forest Street, Sutton-in-Ashfield - NG17 1DA

01623 554084 • sutton@david-james.com • www.david-james.com

These particulars are produced in good faith and are set out as a general guide only. Measurements are approximate and floor plans are for illustrative purposes only. Services have not been tested. We have established professional relationships with third-party suppliers for the provision of services to Clients, details of which can be found on the property listing page on our website.