



## Park Street, W1K

£1,325 Per week

A recently renovated two bedroom apartment on the ground floor of a red brick period conversion in a highly sought after Mayfair location.

Set close to Oxford Street and Marble Arch station, this property is conveniently located within easy reach of the shops and restaurants of Mayfair.

### Features

- Two Double Bedrooms
- Two Modern Bathrooms
- Recently Renovation
- Furnished
- CCTV & Secure Entry Systems
- Wooden Flooring





## Park Street, W1K

The apartment has been recently renovated throughout, offering two double bedrooms with two modern bathrooms.

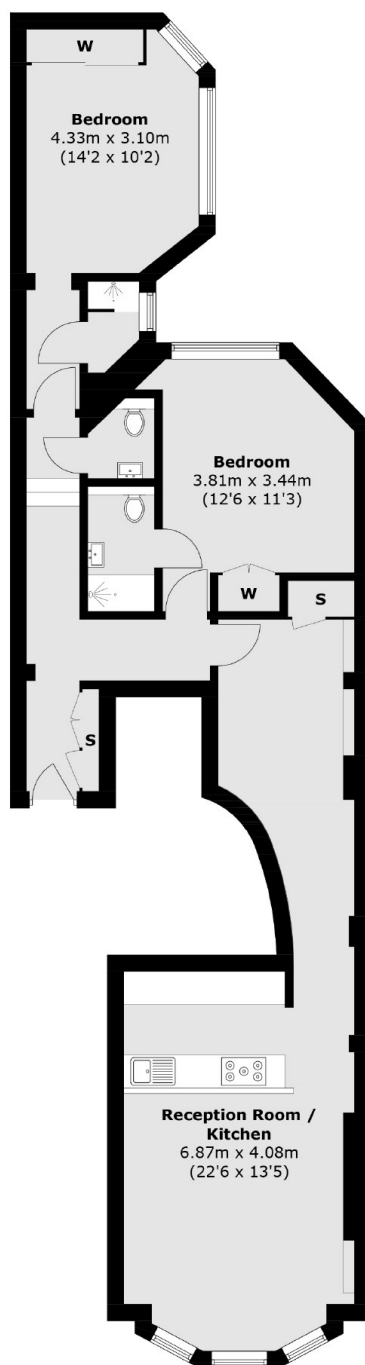
The open-plan kitchen/living area leads out onto a private terrace overlooking Park Street.

The apartment has been furnished to an exceptional standard and has high ceilings, wooden flooring, air conditioning, Banham security and home automation system.





Park Street,  
London, W1K



**Ground Floor**

Total area (approx.): 88.7 sq. m (955.7 sq. ft)

**Dexters**

Wetherell  
102 Mount Street  
London  
W1K 2TH  
Lettings  
020 7529 5588

Energy Rating: C. We aim to make our particulars both accurate and reliable. However they are not guaranteed; nor do they form part of an offer or contract. If you require clarification on any points then please contact us, especially if you're traveling some distance to view. Please note that appliances and heating systems have not been tested and therefore no warranties can be given as to their good working order.

 **RICS** | Regulated  
Estate Agent  
and Letting Agent

[dexters.co.uk](http://dexters.co.uk)