

A beautifully presented and deceptively spacious detached bungalow which has undergone extensive works by the current owner. The property boasts three bedrooms, an impressive living area and refitted kitchen. Located in Stubbington village with local schools close by, offered for sale with no forward chain.

The Accommodation Comprises

Front door to:

Entrance Hall

Radiator, wall unit housing electrics.

Lounge/Dining Room 23' 4" x 11' 11" (7.11m x 3.63m) maximum measurements

Open plan lounge, dining room & kitchen, wood burner, window and bi-folding doors to rear garden, radiator and opening to:

Kitchen 12' 9" x 9' 8" (3.88m x 2.94m)

Fitted with a range of base cupboards and matching eye level units, integrated appliances to include gas hob, double eye level oven, washing machine and dishwasher, single sink unit, roll top work surface, window to rear elevation, cupboard housing boiler, lantern windows.

Bedroom One 12' 11" x 13' 0" (3.93m x 3.96m)

Dual aspect windows to front and side elevation, fitted blinds to stay, radiator.

Bedroom Two 9' 11" x 9' 9" (3.02m x 2.97m)

Window to side elevation, radiator, fitted wardrobe.

Bedroom Three 11' 11" x 7' 11" (3.63m x 2.41m)

Window to side elevation, radiator, access to loft.

Shower Room

Walk in rainfall shower, close coupled WC with concealed cistern, wash hand basin set in vanity unit, obscured window to side elevation, radiator.

Outside

The rear garden is laid to patio and enclosed by wooden panelled fencing. The front of the property benefits with double wooden gates leading to a driveway with space for multiple cars, garage, pebbled area with trees and shrubbery.

Garage

Electric door with push button remote, power sockets, water supply.

General Information

Construction - Traditional

Water Supply – Portsmouth Water

Electric Supply – Mains

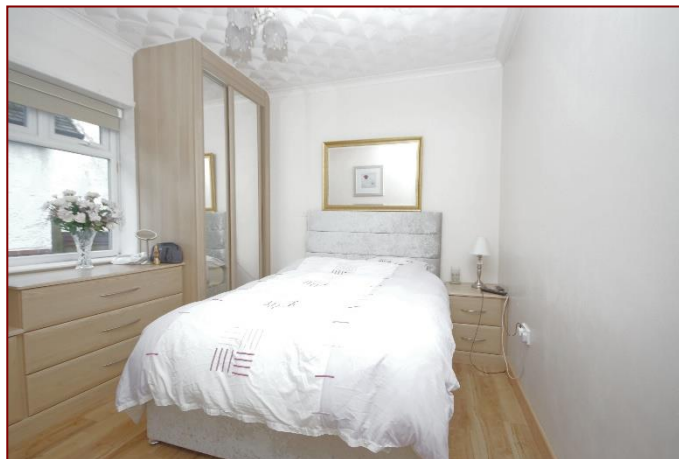
Gas Supply - Mains

Sewerage - Mains

Mobile & Broadband coverage - Please check via:

<https://checker.ofcom.org.uk/>

Flood risk - Please check via: <https://www.gov.uk/check-long-term-flood-risk>





Score	Energy rating	Current	Potential
92+	A		
81-91	B		84 B
69-80	C	69 C	
55-68	D		
39-54	E		
21-38	F		
1-20	G		

Tenure: Freehold

Council Tax Band: D

Disclaimer: These particulars are set out as a general outline in accordance with the Consumer Protection from Unfair Trading Regulations 2008 (CPR's) and Business Protection from Misleading Marketing Regulations 2008 (BPR's) only for the guidance of intending purchasers or lessees, and do not constitute any part of an offer or contract. Details are given without any responsibility, and any intending purchasers, lessees or third parties should not rely on them as statements or representations of fact, but must satisfy themselves by inspection or otherwise as to the correctness of each of them.

We have not carried out a structural survey and the services, appliances and specific fittings have not been tested. All photographs, measurements, floor plans and distances referred to are given as a guide only and should not be relied upon for the purchase of carpets or any other fixtures or fittings. Gardens, roof terraces, balconies and communal gardens as well as tenure and lease details cannot have their accuracy guaranteed for intending purchasers. Lease details, service ground rent (where applicable) are given as a guide only and should be checked and confirmed by your solicitor prior to exchange of contracts.

No person in the employment of Fenwicks Estates Ltd has any authority to make any representation or warranty whatever in relation to this property. Purchase prices, rents or other prices quoted are correct at the date of publication and, unless otherwise stated, exclusive of VAT.

Data Protection: We retain the copyright in all advertising material used to market this Property.

Money Laundering Regulations 2017: Intending purchasers will be required to produce identification documentation once an offer is accepted.



£510,000

44 Gosport Road, Stubbington, Fareham, PO14 2AN

DRAFT DETAILS

Fenwicks

THE INDEPENDENT ESTATE AGENT

Fenwicks - Lee on the Solent Office: 02392 551 199 www.fenwicks-estates.co.uk