



Connells

Bulls Head Lane
Coventry



Property Description

This modern and spacious double-bayed mid-terrace family home is situated on the popular Bulls Head Lane, conveniently positioned for local amenities, schools, and excellent transport links.

The ground floor offers well-proportioned accommodation comprising a bright and welcoming lounge, a separate dining room with patio doors opening directly onto the rear garden, a modern fitted kitchen, and the added benefit of a useful utility room providing further storage and practicality.

To the first floor are three well-proportioned bedrooms and a fitted family bathroom. The property also benefits from a boarded loft space, offering valuable additional storage.

Externally, the home features a rear garden with rear access, ideal for families and outdoor entertaining.

This modern and well-maintained property would make an ideal family home or first-time purchase, and viewing is highly recommended to fully appreciate the space and condition on offer. Early viewing is highly recommended.

Approach

Front door.

Entrance Hall

Stairs to first floor.

Lounge

Double glazed bay window to the front elevation and radiator.

Dining Room

Radiator and double glazed doors opening onto the rear garden.

Fitted Kitchen

Wall and base mounted units incorporating an inset single drainer stainless steel sink unit with work surfaces. Integrated electric oven and electric hob with cookerhood over, plumbing for automatic washing machine, space for domestic appliance, radiator, double glazed window to the rear elevation and door to rear lobby.

Rear Lobby

Door to the side elevation and further door to;

First Floor Landing

Doors to;

Bedroom One

Double glazed bay window to the front elevation and radiator.

Bedroom Two

Double glazed window to the rear elevation and radiator.

Bedroom Three

Double glazed window to the front elevation and radiator.

Fitted Bathroom

Tiled, comprising bath with shower over, wash hand basin, toilet, radiator and double glazed window to the rear elevation.

Outside

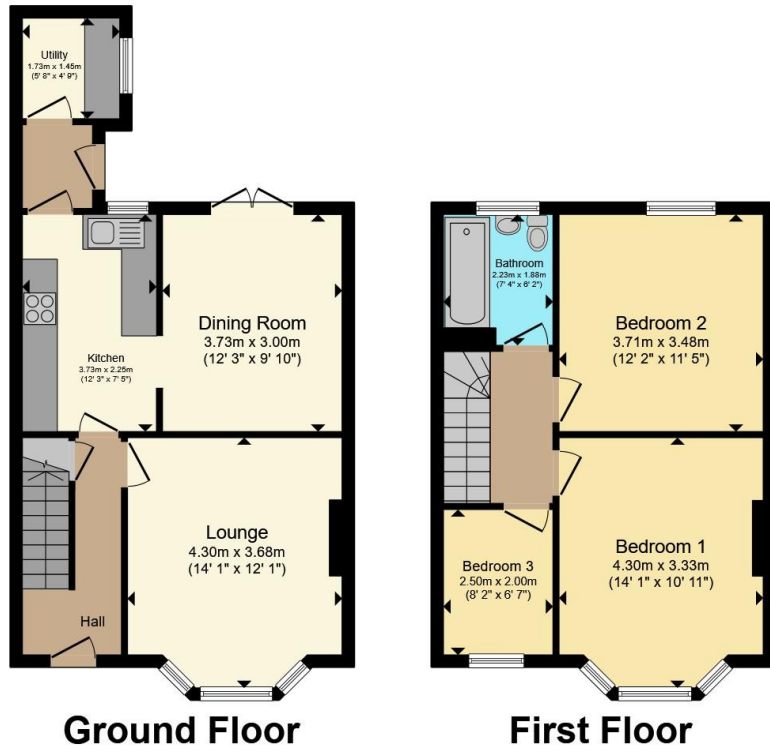
Front Of Property

Lawned with pathway to front door.

Rear Garden

A paved and stoned low maintenance garden.





Total floor area 89.9 m² (968 sq.ft.) approx

This floor plan is for illustrative purposes only. It is not drawn to scale. Any measurements, floor areas (including any total floor area), openings and orientation are approximate. No details are guaranteed, they cannot be relied upon for any purpose and they do not form part of any agreement. No liability is taken for any error, omission or misstatement. A party must rely upon its own inspection(s). Powered by www.propertybox.io



To view this property please contact Connells on

T 02476 553 093
E coventry@connells.co.uk

38 New Union Street
 COVENTRY CV1 2HN

EPC Rating: E Council Tax Band: B

view this property online connells.co.uk/Property/COV323849

Tenure: Freehold



1. MONEY LAUNDERING REGULATIONS Intending purchasers will be asked to produce identification documentation at a later stage and we would ask for your co-operation in order that there will be no delay in agreeing the sale. 2. These particulars do not constitute part or all of an offer or contract. 3. The measurements indicated are supplied for guidance only and as such must be considered incorrect. Potential buyers are advised to recheck measurements before committing to any expense. 4. We have not tested any apparatus, equipment, fixtures, fittings or services and it is in the buyers interest to check the working condition of any appliances.

Connells Residential is registered in England and Wales under company number 1489613, Registered Office is Cumbria House, 16-20 Hockliffe Street, Leighton Buzzard, Bedfordshire, LU7 1GN. VAT Registration Number is 500 2481 05.

See all our properties at www.connells.co.uk | www.rightmove.co.uk | www.zoopla.co.uk

Property Ref: COV323849 - 0005