



Moreton Avenue, TW7

£2,250 Per calendar month

This newly decorated three bedroom house offers bright and spacious accommodation throughout, featuring generous living areas, a separate dining room, and an abundance of natural light. Outside, a private rear garden provides additional space for relaxing and entertaining.

Moreton Avenue is ideally situated in the heart of Isleworth, just a short walk from Osterley Underground and Isleworth Mainline stations, with excellent access to the A4, M4, local shops, amenities and Heathrow Airport.

Features

- Newly Decorated
- Three Bedrooms
- Spacious Reception Room
- Private Garden
- Local Amenities
- Central Location



Moreton Avenue, TW7

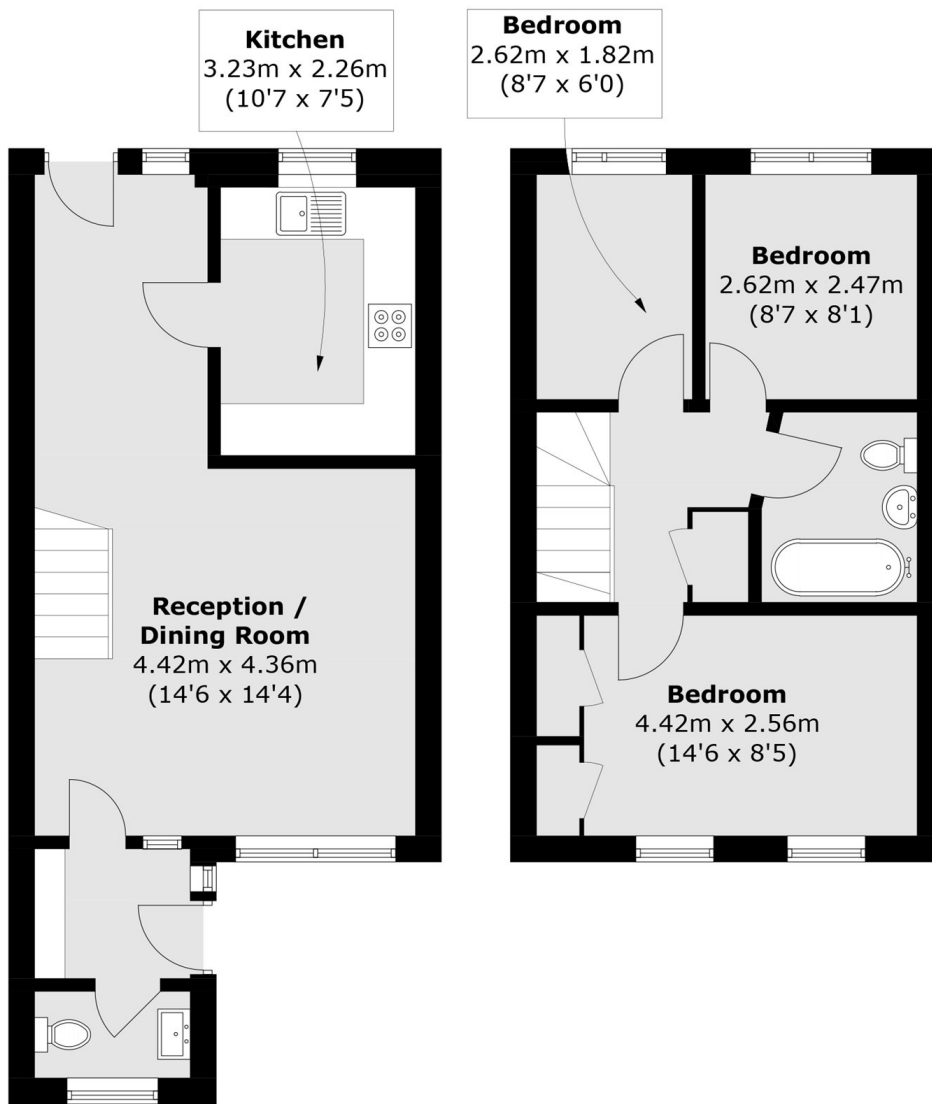
Newly decorated throughout, the bright reception room provides an inviting living space, flooded with natural light from large windows. A separate dining area connects to the kitchen, creating a practical layout for living and entertaining.

Upstairs, three well proportioned bedrooms offer flexible accommodation for families, guests or home working. Each room benefits from excellent natural light, while the newly decorated interiors create a fresh, airy and welcoming atmosphere throughout upstairs.

Outside, the property enjoys both front and rear outdoor spaces, including a private courtyard garden perfect for relaxing or al fresco dining.



Moreton Avenue, Isleworth, TW7



Ground Floor

First Floor

Total area (approx.): 72.2 sq. m (777.0 sq. ft)