



## Ashburn Gardens, SW7

£3,500 Per week

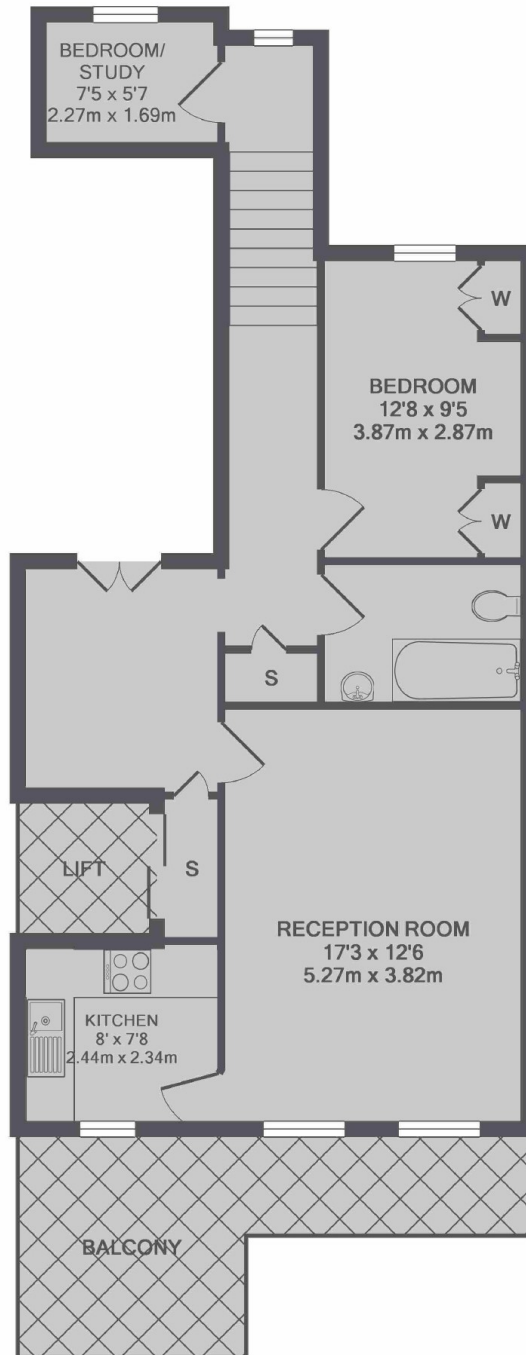
A furnished two bedrooms flat situated on the first floor of a stucco-fronted Victorian building, with direct lift access. The property offers a private terrace and modern furnishings, and is ideally located just off Gloucester Road.

Conveniently situated near Gloucester Road, the property is within easy reach of a wide range of cafés, shops, and restaurants, including Waitrose, Boots, Pret, and Black & Blue. Gloucester Road Underground Station is the nearest station, providing excellent transport links.

### Features

- Two Double Bedrooms
- First Floor
- High Ceilings
- Private Terrace
- Direct Lift Access
- Gloucester Road Underground

# Ashburn Gardens, London, SW7



TOTAL APPROX. FLOOR AREA 685 SQ.FT. (63.6 SQ.M.)