



3-4 Lumbfoot, Keighley, BD22 0EY

**Asking price £395,000**



Situated close to the villages of Stanbury and Haworth, this stunning three bedroom double-cottage is located in the hamlet of Lumbfoot and benefits from breath-taking views across the valley.

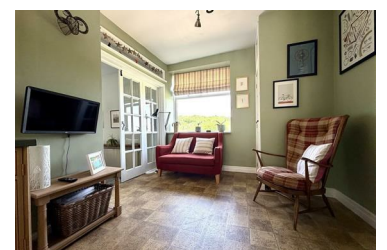
The property briefly comprises;

To the ground floor; large kitchen/diner with Aga, spacious lounge/diner with multi-fuel burning stove.

To the first floor; two large double bedrooms with fitted wardrobes, a third smaller double bedroom, modern shower room and family bathroom.

To the lower ground floor; utility room and cellar space for storage with access to the rear lawned courtyard.

Externally the property boasts extensive garden space with spectacular views across the valley, a summer house, three off street parking spaces and a double garage.



- SPECTACULAR VIEWS ACROSS THE VALLEY
- DOUBLE GARAGE
- UTILITY SPACE
- DOUBLE-COTTAGE
- THREE PARKING SPACES
- EXTENSIVE GARDENS