



8b Cadborough Cliff, Rye
£850,000

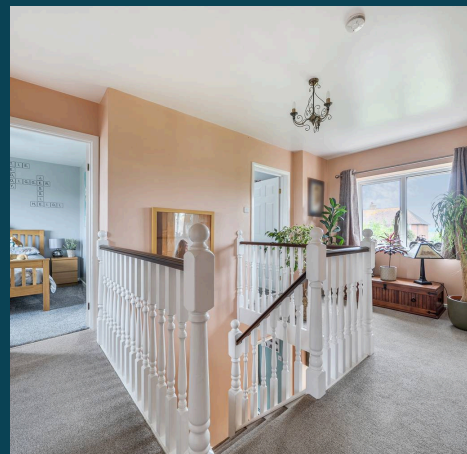


Barnaby Osborne in partnership with Nested offer For Sale this impressive and versatile, five bedroom detached house which occupies a secluded position in a quiet residential road, offering exceptional views towards the sea and across open fields. The property is within a short walk of Rye town centre, providing easy access to local amenities, shops, and restaurants while retaining a peaceful sense of privacy.

The spacious and versatile accommodation includes a self-contained annexe, ideal for guests, relatives, or as a potential income opportunity.

The main home comprises on the ground floor, entrance hallway, lounge, dining room, kitchen/breakfast room, study, downstairs WC, utility cupboard and garage, providing ample space for storage or hobbies. To the first floor, there is a beautiful galleried landing with four bedrooms and a family bathroom. The principle bedroom has it's own en-suite bathroom, dressing room and further study/dressing area. The aforementioned annexe features its own bedroom, lounge, kitchen, and shower room.

The outside space is equally impressive, with a large south-facing rear garden that enjoys all-day sun and breathtaking views towards the sea. Two patios to the immediate rear of the house provide the perfect setting for outdoor dining or relaxing while taking in the scenery. The wide, level lawn is ideal for children to play or for keen gardeners to create their own outdoor haven. To the side of the property, there is a substantial storage shed offering further space for equipment or potential landscaping projects. The annexe benefits from its own small courtyard area, providing a private spot for morning coffee or quiet reflection.





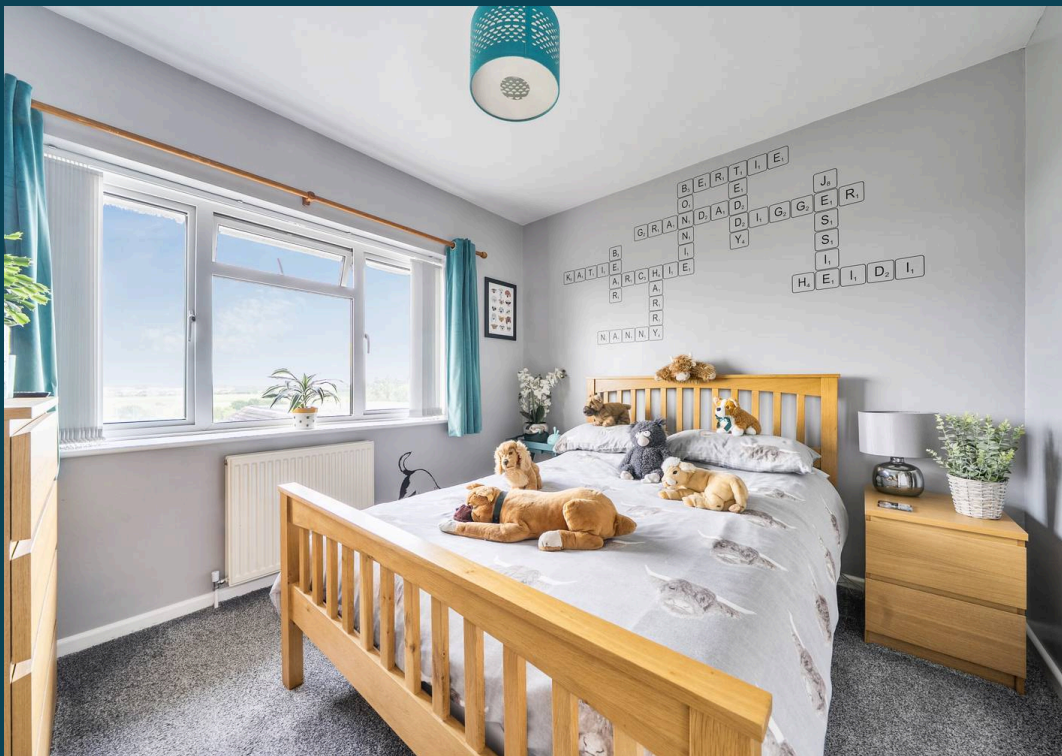
8b Cadborough Cliff

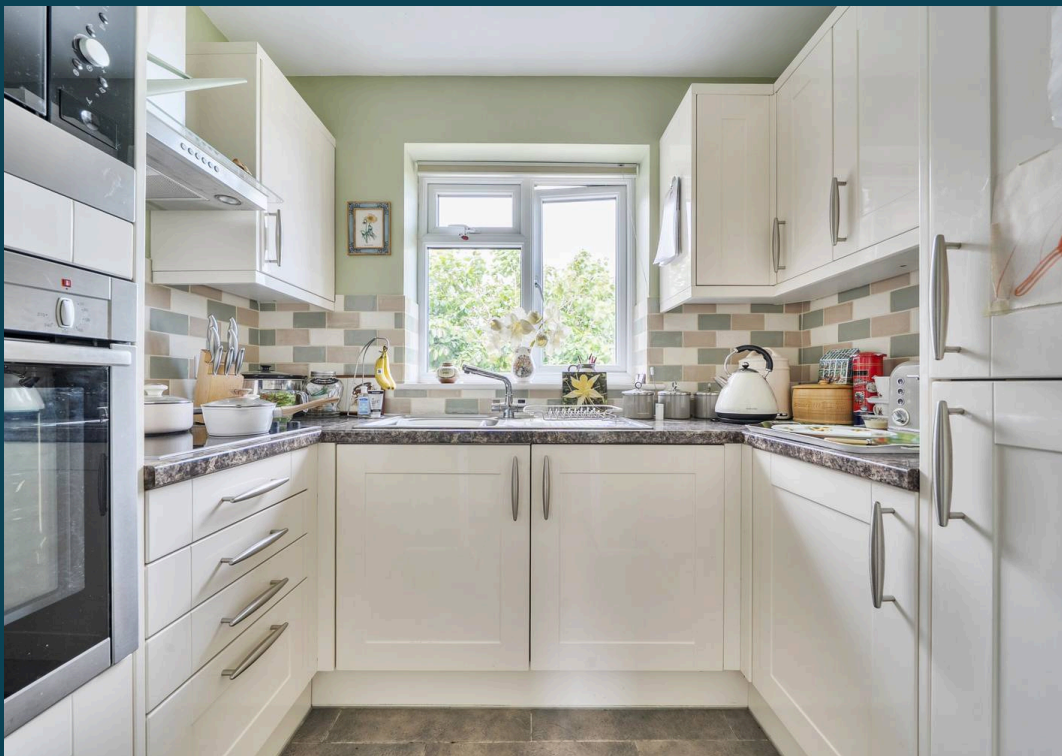
Rye

Spacious & versatile five bed detached house with sea views, self-contained annexe, large south-facing garden, larger than average garage. Quiet location & walking distance to Rye Town Centre.

- Stunning Views Towards the Sea & Over Fields
- Larger than Average Garage
- Self Contained Annexe with Bedroom, Lounge, Kitchen & Shower Room
- A Short Walk into Rye Town Centre
- Bedroom One with Dressing Room, En-Suite Bathroom & Further Study/Dressing Area
- Wide, Level Rear Garden
- Secluded Position in Quiet Residential Road
- Parking for Multiple Vehicles
- Fantastic Home & Income Opportunity
- Perfect for Multi-Generational Living







Cadborough Cliff, Rye, TN31

Approximate Area = 1903 sq ft / 176.7 sq m

Garage = 245 sq ft / 22.7 sq m

Annexe = 481 sq ft / 44.6 sq m

Total = 2629 sq ft / 244 sq m

For identification only - Not to scale



Floor plan produced in accordance with RICS Property Measurement 2nd Edition, Incorporating International Property Measurement Standards (IPMS2 Residential). © nichecom 2026. Produced for Nested. REF: 1470715





Nested Rye

01797 903045 • barnaby.osborne@nested.com • nested.com/barnaby-osborne

