



Chance Street

Shoreditch, E2

Asking Price £1,000,000

A bespoke hidden, three bedroom, three bathroom apartment finished to a high standard throughout, found through an inconspicuous entrance right in the heart of Shoreditch.



Chance Street

Shoreditch, E2

- 3 bedroom modern apartment
- 3 bathrooms
- Private balcony
- Great location in prime Shoreditch



A bespoke hidden, three bedroom, three bathroom apartment finished to a high standard throughout, found through an inconspicuous entrance right in the heart of Shoreditch. The property is bright and well-proportioned comprising; three good sized double bedrooms; with two of the three bedrooms benefitting from built in wardrobes and en-suite shower rooms; contemporary family bathroom with bath and overhead shower; expansive open-plan kitchen/living dining area leading on to a private balcony. The property further benefits from a share of the freehold along with reasonable service charge costs. The apartment is nestled between Redchurch Street and Old Nichol Street, in the heart of Shoreditch. The area is known for its mix of independent fashion boutiques, concept stores, cafés, restaurants and local eateries, alongside well-known brands and popular food spots including the amenities of the famous Shoreditch House which is located opposite; Columbia Road with its famous Sunday flower market is a short walk away. Shoreditch High Street station is just a short walk away, providing quick connections to Canada Water and the West End. Liverpool Street station is around half a mile away, while Underground services are also easily accessed via Old Street station.

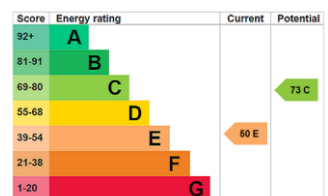
Tenure: Share of Freehold 108 years 5 months

Service Charge: £2400

Ground Rent: £0

Local Authority: Tower Hamlets

Council Tax Band: E



Chestertons Property Services

The Lantern

75 Hampstead Road

London

NW1 2PL

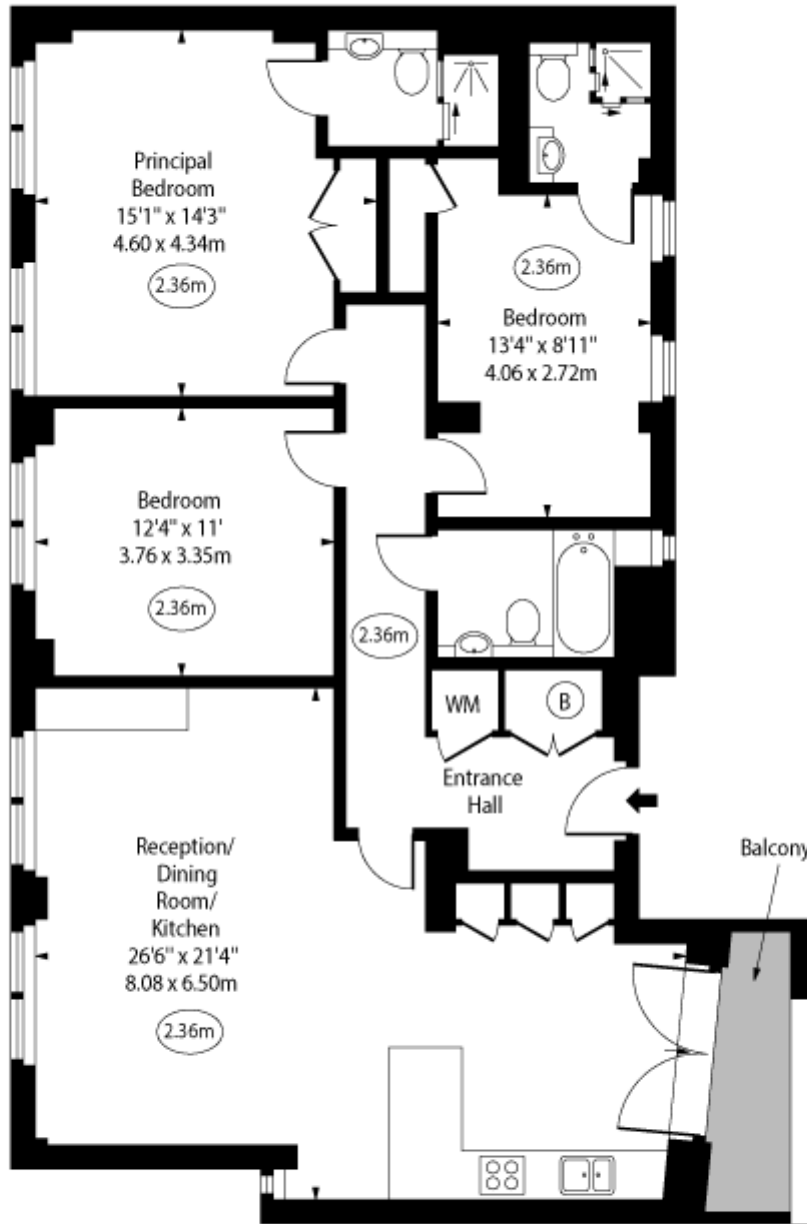
valuations@chestertons.co.uk

020 3040 8440

chestertons.co.uk

Chance Street, E2

○ - Ceiling Height



First Floor

Approx Gross Internal Area 1182 Sq Ft - 109.81 Sq M

Every attempt has been made to ensure the accuracy of the floor plan shown. However, all measurements, fixtures, fittings, and data shown are approximate interpretations and for illustrative purposes only. Measured according to the RICS. Not To Scale.

www.goldlens.co.uk
Ref. No. 031655M

