

FREEHOLD



House - Terraced

BECONTREE AVENUE, DAGENHAM, RM8 3HP

Offers In The Region Of
£375,000

FEATURES

- THREE BEDROOMS
- LOUNGE
- KITCHEN
- FULL BATHROOM SUITE/WC
- GAS HEATING
- DOUBLE GLAZED
- APPROX ONE MILE TO CHADWELL HEATH
- COUNCIL TAX C



STEPS

Estate Agents

3 Bedroom House - Terraced located in Dagenham

HALLWAY

Understairs cupboard.

LOUNGE

13 x 12

Window to front.

KITCHEN

12 x 8

Window and door to garden.

BATHROOM

Three piece suite/wc window.

LANDING

Loft access.

BEDROOM ONE

15 x 10

Window to front.

BEDROOM TWO

10 x 10

Window to rear.

BEDROOM THREE

8'6 x 7'8

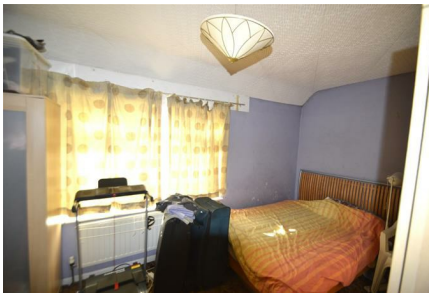
Window to rear.

EXTERIOR

Conventional front garden very large L SHAPE back garden approx 80 x 60 at widest point.

We routinely refer potential purchasers to Move with Us Ltd. It is your decision

whether you choose to deal with Move with Us Ltd. In making that decision, you should know that we receive an annual payment benefits from Move with Us Ltd, equating to approximately £314.48 per referral.

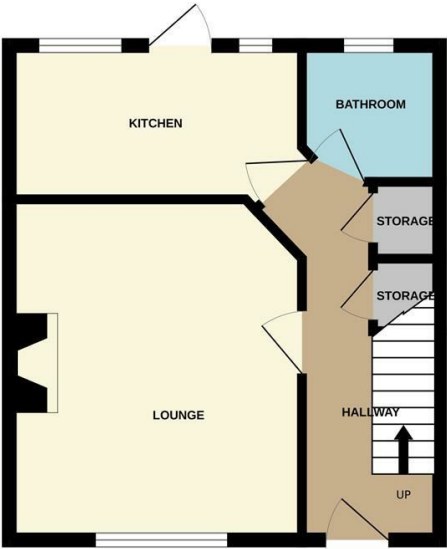


DAGENHAM SALES | STEPS ESTATE AGENTS, 298 HEATHWAY, DAGENHAM, ESSEX, RM10 8LU

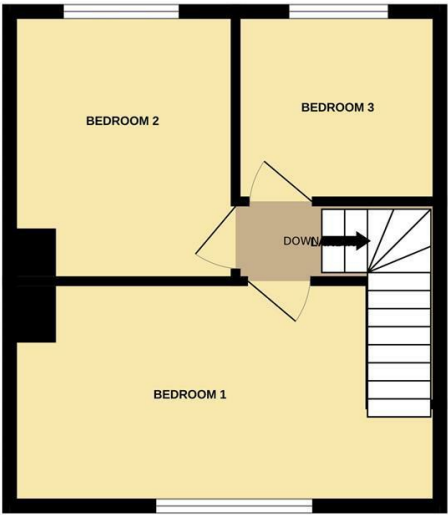
Call us on
020 8593 5933
dagenham@steps.me.uk
www.steps.me.uk

Council Tax Band
C

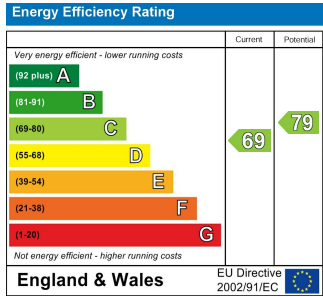
GROUND FLOOR



1ST FLOOR



Whilst every attempt has been made to ensure the accuracy of the floorplan contained here, measurements of doors, windows, rooms and any other items are approximate and no responsibility is taken for any error, omission or mis-statement. This plan is for illustrative purposes only and should be used as such by any prospective purchaser. The services, systems and appliances shown have not been tested and no guarantee as to their operability or efficiency can be given.
Made with Metropix ©2025



Agents Note: Whilst every care has been taken to prepare these particulars, they are for guidance purposes only. All measurements are approximate and are for general guidance purposes only and whilst every care has been taken to ensure their accuracy, they should not be relied upon and potential buyers are advised to recheck the measurements.

