



FULLWELL AVENUE, ILFORD, IG5

£1,650 PER CALENDAR

Goldman Greg are delighted to offer this two double bedroom first floor maisonette on Fullwell Avenue .

The maisonette benefits from two double bedrooms, a spacious living room with separate kitchen, a fully tiled bathroom and access to a garden - perfect for the summer months!

The property is within close proximity of local shopping facilities and bus services which offer direct links to Barkingside High Street. Fullwell Avenue also offers excellent transport links via Fairlop, Barkingside and Hainault Stations.

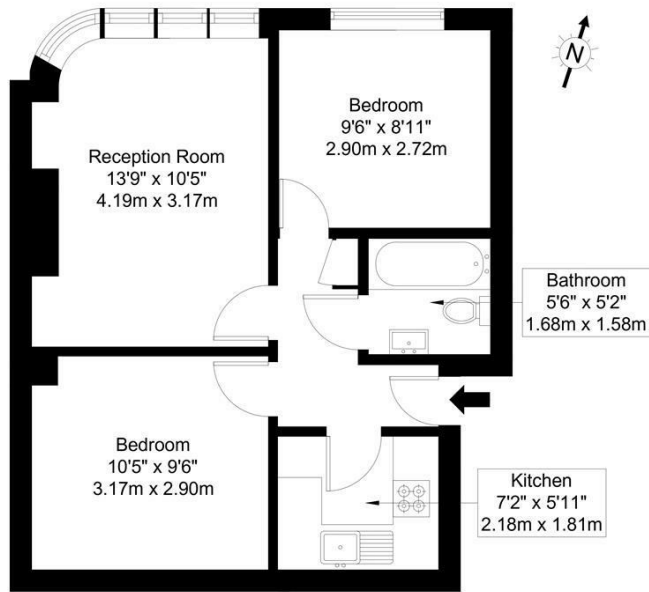
Available 10/08/2026 and offered unfurnished, early viewings are highly recommended.



Goldman Greg

Fullwell Avenue, IG5 0RB

Approx Gross Internal Area = 43.13 sq m / 464 sq ft

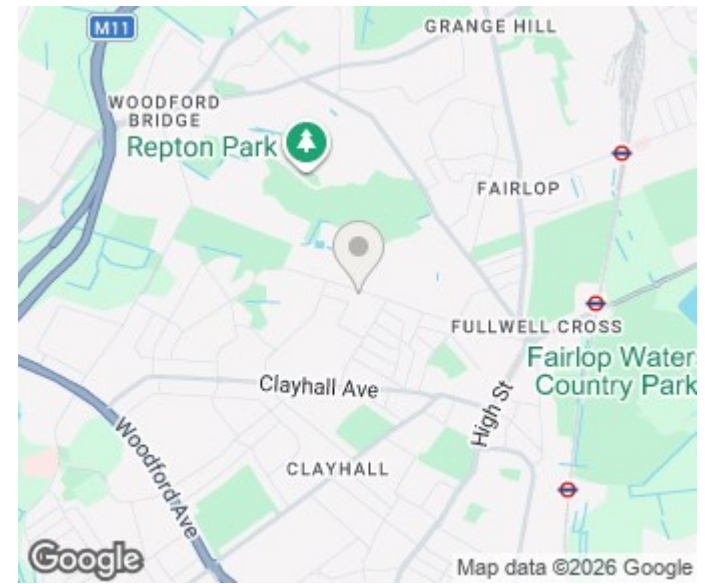


First Floor

Ref :

Copyright **BLEU PLAN**

The Floor plan is not to scale and measurements and areas shown are approximate and therefore should be used for illustrative purposes only. The plan has been prepared in accordance with the RICS code of Measuring Practice and whilst we have confidence in the information produced it must not be relied on. If there is any aspect of particular importance, you should carry out or commission your own inspection of the property.
Copyright @ BLEUPLAN



Energy Efficiency Rating		Current	Potential
Very energy efficient - lower running costs			
(92 plus) A			
(81-91) B			
(69-80) C		69	77
(55-68) D			
(39-54) E			
(21-38) F			
(1-20) G			
Not energy efficient - higher running costs			
England & Wales		EU Directive 2002/91/EC	

Agents Note: Whilst every care has been taken to prepare these particulars, they are for guidance purposes only. All measurements are approximate and are for general guidance purposes only and whilst every care has been taken to ensure their accuracy, they should not be relied upon and potential buyers/tenants are advised to recheck the measurements

Goldman Greg
143 Leman Street
London
E1 8EY

02079770018
leads@goldmangreg.co.uk
www.goldmangreg.co.uk

