



HIVE

FLAT 8
THE OLD RECTORY SOMERLEIGH
ROAD
DORCHESTER
DT1 1PD



Agent's introduction

Spacious penthouse apartment with two allocated parking spaces and high end fittings. Short walk to town centre and local services.



HIVE





Property highlights

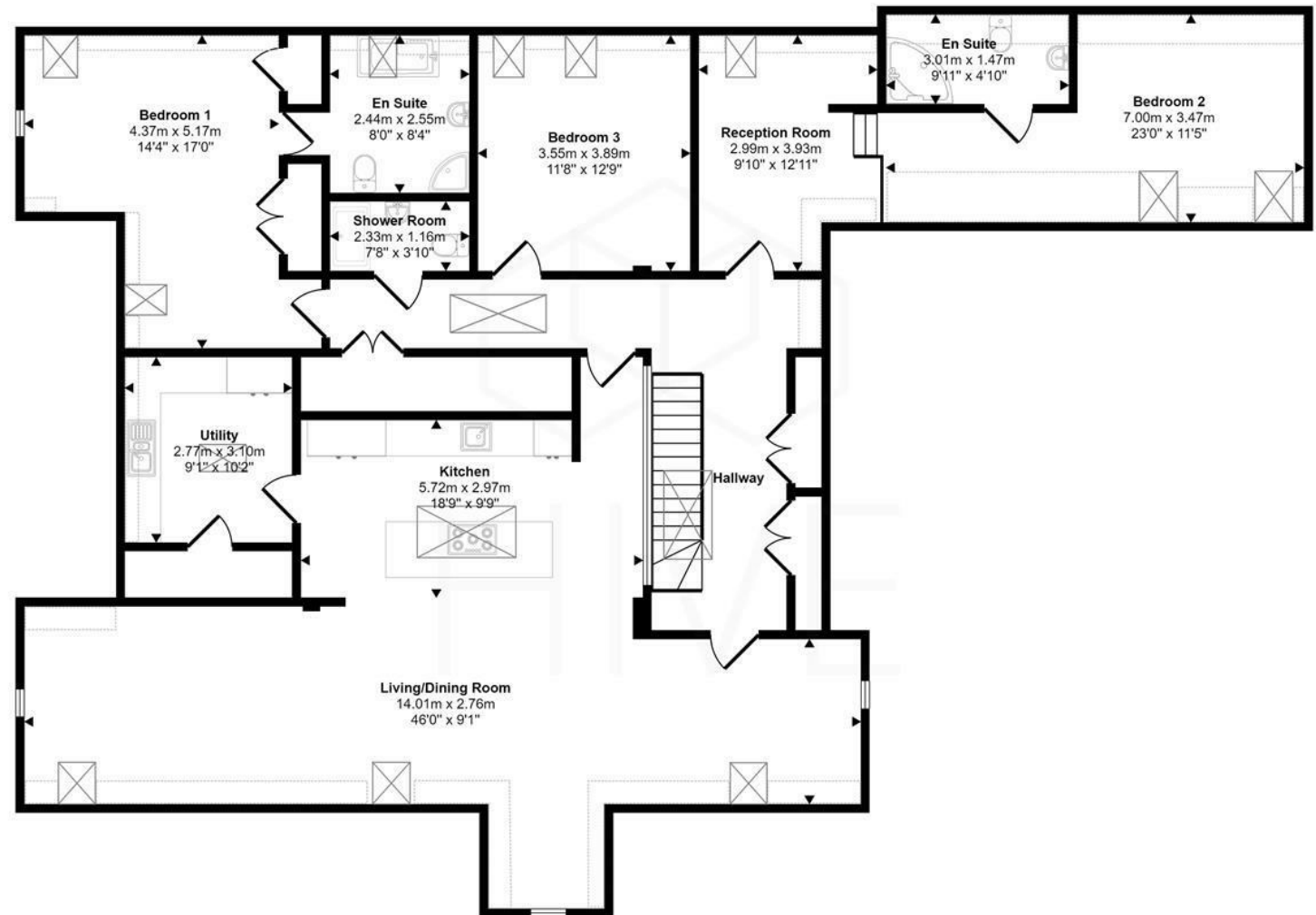
- Three bedrooms, three bathrooms
- Spacious open plan living
- Separate utility room
- Ample storage
- Two allocated parking spaces (off-street)
- Close to Borough Gardens
- Town centre and bus stops nearby
- Bright and spacious throughout



HIVE

Floor plan and EPC

Approx Gross Internal Area
194 sq m / 2086 sq ft



Floorplan

Denotes head height below 1.5m

This floorplan is only for illustrative purposes and is not to scale. Measurements of rooms, doors, windows, and any items are approximate and no responsibility is taken for any error, omission or mis-statement. Icons of items such as bathroom suites are representations only and may not look like the real items. Made with Made Snappy 360.

Energy Efficiency Rating

	Current	Potential
Very energy efficient - lower running costs		
(92 plus) A		
(81-91) B		
(69-80) C	80	80
(55-68) D		
(39-54) E		
(21-38) F		
(1-20) G		
Not energy efficient - higher running costs		
England & Wales		
EU Directive 2002/91/EC		



HIVE



HIVE & Partners Unit F1, Arena Business Centre 9 Nimrod Way, Ferndown, BH21 7UH
01202 122 002 | www.hiveandpartners.co.uk | sales@hiveandpartners.co.uk