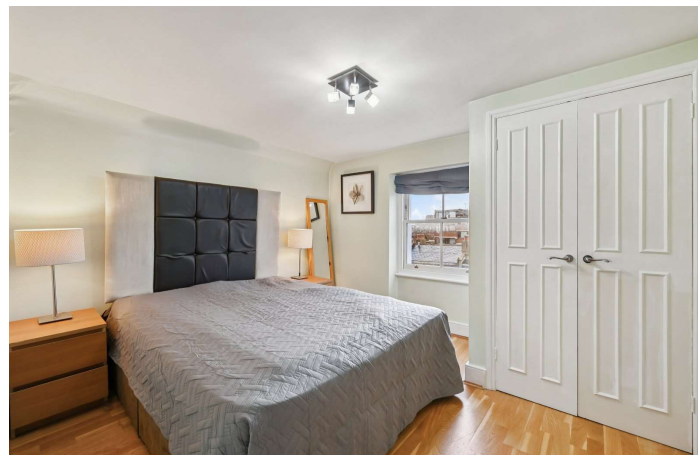




Belgrave Road  
London, SW1V

CHESTERTONS





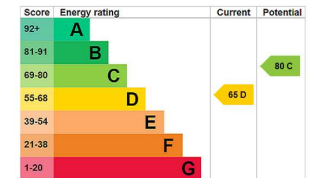
A stylish one bedroom lateral apartment located in this stucco fronted period building in the heart of Pimlico, showcasing charming original features throughout.

This beautifully presented home comprises one double bedroom, a modern bathroom, fully-fitted modern kitchen, and a bright reception room. The spacious open-plan offers a versatile living and entertaining area, ideal for hosting. The property is offered with a share of freehold and no onward chain, making it an attractive and straightforward purchase.

Located on Belgrave Road, the apartment is ideally positioned within easy reach of the boutiques, cafés and restaurants of Pimlico, Belgravia and Chelsea. Excellent transport links are available nearby at Victoria Station, offering access to the Victoria, Circle and District lines, National Rail services, and the Gatwick Express.

- Stylish one-bedroom lateral apartment in a stucco-fronted period building in the heart of Pimlico
- Charming original features throughout and beautifully presented interiors
- One double bedroom, modern bathroom, fully fitted contemporary kitchen, and bright reception r
- Spacious open-plan living and entertaining area, ideal for hosting
- Share of freehold and offered with no onward chain for a straightforward purchase
- Prime Belgrave Road location close to Pimlico, Belgravia and Chelsea, close by Victoria Station.

Asking Price £500,000



**Tenure:** Share of Freehold - 999 Years from 25 December 2011

**Service Charge:** £3,500 per annum

**Ground Rent:** £0

**Local Authority:** Westminster

**Council Tax Band:** E

*Chestertons Westminster & Pimlico Sales*

105 Wilton Road

London

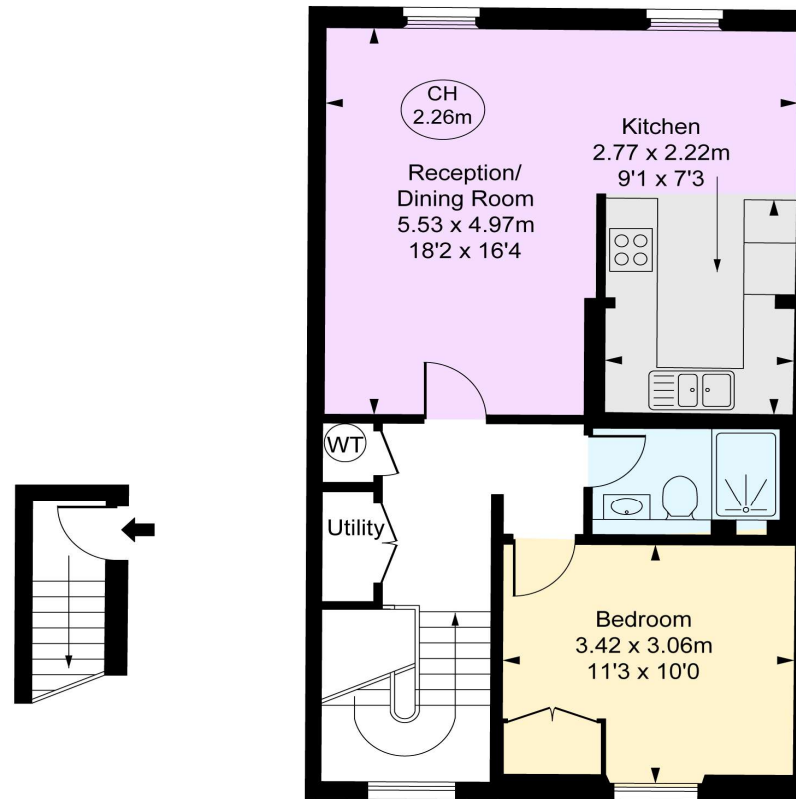
SW1V 1DZ

westminster@chestertons.co.uk

020 3040 8201

chestertons.co.uk

Belgrave Road, SW1V  
 Approximate Gross Internal Area  
 55.41 sq m / 596 sq ft  
 ( CH = Ceiling Heights )



Third Floor Entrance  
 Approximate Gross Internal Area  
 2.09 sq m / 22 sq ft

Fourth Floor  
 Approximate Gross Internal Area  
 53.32 sq m / 574 sq ft



This plan is not to a given scale. A detailed layout plan to scale for valuation is available on request. All measurements and areas are within 1% tolerance and have been prepared in accordance with industry standards as defined in the RICS Code of Measuring Practice.  
 © Fulham Performance

Chesterton UK Services Limited trading as Chestertons for themselves and for the vendor of this property whose agents they are, give notice that (i) these particulars do not constitute any part of an offer or contract, (ii) all statements contained within these particulars are made without responsibility on the part of Chestertons or the vendor, (iii) whilst made in good faith, none of the statements contained within these particulars are to be relied upon as a statement or representation of fact, (iv) any intending purchasers must satisfy themselves by inspection or otherwise as to the correctness of each of the statements contained within these particulars, (v) the vendor does not make or give either Chestertons or any person in their employment any authority to make or give representation or warranty whatsoever in relation to this property. Wide angle lenses may be used. ©Copyright Chestertons | Chesterton UK Services Limited | Registered Office 40 Connaught Street, Hyde Park, London W2 2AB Registered Company Number 05334580.

