

Payton  
Jewell  
Caines



76 Mariners Quay, Port Talbot – SA12 6AN  
Port Talbot

In Excess of £300,000



## 76 Mariners Quay

Port Talbot, Port Talbot

We are delighted to welcome to the market with no onward chain this immaculately presented three bedroom detached property which is located within easy walking distance of Aberavon beach front and would be an ideal choice for families. Benefiting from close proximity to local shops, primary schools and amenities with good transport links to the M4 corridor as well as Port Talbot town centre. Early viewing is recommended.

The property briefly comprises reception room, kitchen/diner and downstairs w.c. To the first floor there is a master bedroom with en suite, two further bedrooms and family bathroom. Externally is a closed rear garden laid to lawn and off road parking to the front with single garage.



- 3 Bed Detached House
- Walking Distance Of Aberavon Sea Front
- No Onward Chain
- En Suite, Family Bathroom & Downstairs WC
- Off Road Parking & Single Garage
- EPC C



### Entrance

Skimmed, emulsioned and coved ceiling with ceiling light and smoke detector, skimmed and emulsioned walls, radiator, under stairs storage, stairs leading to the first floor and vinyl flooring in Herringbone wood effect. Doors leading off and stairs leading to the first floor.

### Reception Room

3.11m x 5.59m (10' 2" x 18' 4") Skimmed, emulsioned and coved ceiling with two ceiling lights, skimmed and emulsioned walls, two radiators and fitted carpet. Dual aspect PVCu double glazed windows to the front and PVCu double glazed French doors leading to the rear garden. The focal point of the room is the fireplace with wooden mantle and marble hearth and surround with space for an electric fire.

### Kitchen/Diner

2.71m x 5.70m (8' 11" x 18' 8") Skimmed, emulsioned and coved ceiling with two sets of ceiling lights, skimmed and emulsioned walls and radiator, Dual aspect PVCu double glazed window to the front and PVCu French doors leading to the rear garden. Newly installed Wren kitchen comprising a range of wall and base units with coordinating marble effect work surfaces and matching up stands with under counter lighting and spot lights to the plinths. Integrated appliances include an automatic washing machine, dishwasher, gas hob with over head extractor hood and oven. Space for fridge/freezer and dining table and chairs. Vinyl flooring in Herringbone wood effect.



**Downstairs WC**

1.17m x 1.76m (3' 10" x 5' 9") Skimmed and emulsioned ceiling with ceiling light, skimmed and emulsioned walls, radiator, PVCu frosted double glazed window overlooking the rear of the property. Two piece suite comprising low level w.c. pedestal wash hand basin with tiling to the splash back and vinyl flooring in Herringbone wood effect.

**Landing**

Via stairs with fitted carpet and wooden spindle balustrade. Skimmed and emulsioned ceiling with ceiling light, smoke detector and access to the loft which is partially boarded for storage. Skimmed and emulsioned walls, radiator, fitted carpet and PVCu double glazed window overlooking the rear of the property. Built in storage housing a gas fired combination boiler. Doors leading off.

**Bedroom 1**

3.25m x 4.79m (10' 8" x 15' 9") measurements narrow to 3.21m. Skimmed and emulsioned ceiling, skimmed and emulsioned walls, radiator, PVCu double glazed window overlooking the rear and fitted carpet. Built in wardrobe with double doors and further cupboard for storage. Door leading to the en suite.

**En-Suite**

1.36m x 2.80m (4' 6" x 9' 2") Measurements are into the shower cubicle. Skimmed and emulsioned ceiling with ceiling light, skimmed and emulsioned walls with tiling to the splash back areas, radiator and PVCu frosted double glazed window overlooking the front of the property. Three piece suite comprising low level w.c. pedestal wash hand basin and shower cubicle. Vinyl flooring in Herringbone wood effect.

**Bedroom 2**

2.78m x 2.96m (9' 1" x 9' 9") Skimmed and emulsioned ceiling with ceiling light, skimmed and emulsioned walls, radiator, PVCu double glazed window overlooking the front of the property and fitted carpet. Built in wardrobes with double doors.

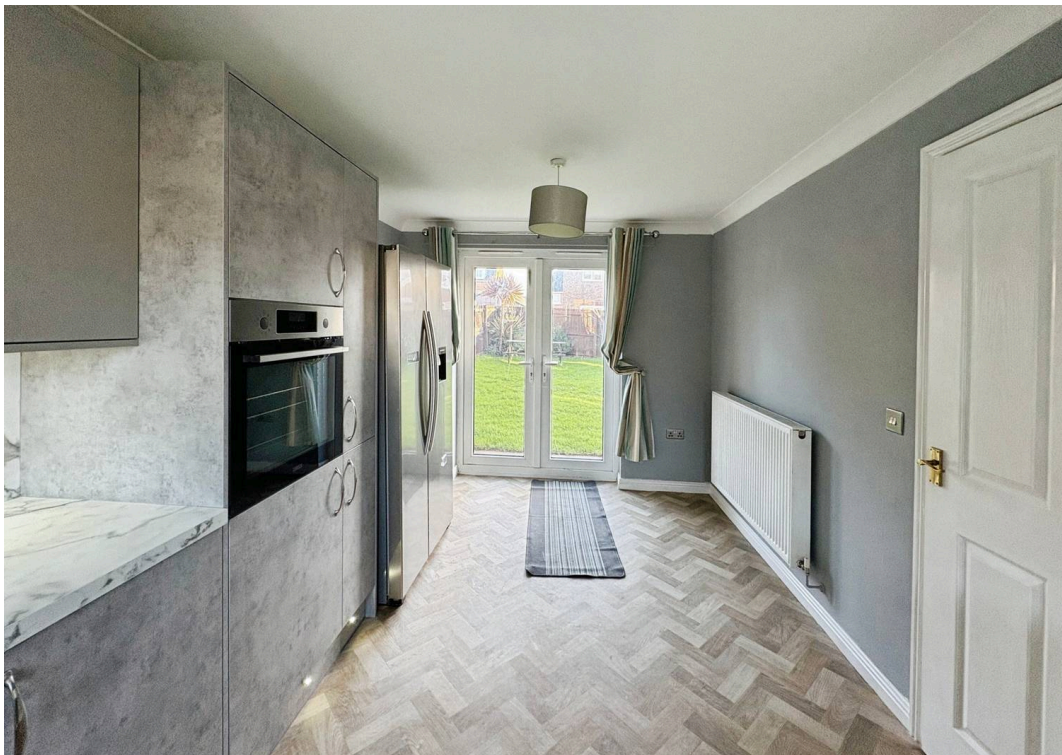
**Bedroom 3**

2.00m x 2.79m (6' 7" x 9' 2") Skimmed and emulsioned ceiling with ceiling light, skimmed and emulsioned walls, radiator, PVCu double glazed window overlooking the rear of the property and fitted carpet. Built in storage cupboard.

**Family Bathroom**

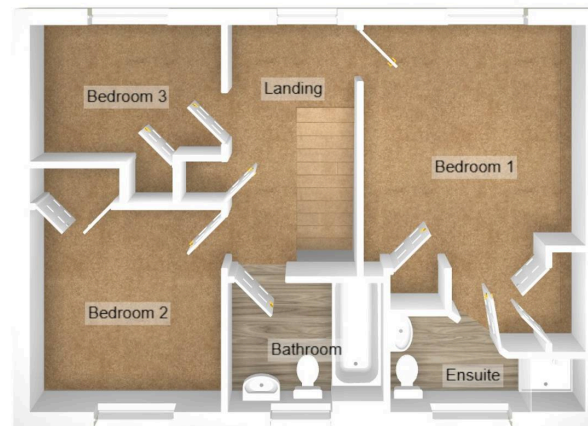
1.90m x 2.28m (6' 3" x 7' 6") Skimmed and emulsioned ceiling with ceiling light, extractor fan, part emulsioned / part tiled walls to the splash back areas, radiator and PVCu frosted double glazed window overlooking the front of the property. Three piece suite in white comprising low level w.c. pedestal wash hand basin and panelled bath. Vinyl flooring in Herringbone wood effect.







GROUND FLOOR



FIRST FLOOR

## Payton Jewell Caines

Payton Jewell Caines, 53 Station Road – SA13 1NW

01639891268 • porttalbot@pjchomes.co.uk • pjchomes.co.uk/

These property details are provided as a general guide only. Whilst we aim for accuracy, measurements, photographs, floor plans, and descriptions should not be relied upon as statements of fact. Buyers should carry out their own checks regarding the property, services, and specifications. Fixtures and fittings are only included if specifically stated. Appliances and services have not been tested.